

CITY OF HAM LAKE

15544 Central Avenue NE
Ham Lake, Minnesota 55304
(763) 434-9555
Fax: (763) 434-9599

CITY OF HAM LAKE CITY COUNCIL AND ECONOMIC DEVELOPMENT AUTHORITY AGENDA MONDAY, NOVEMBER 15, 2021

- 1.0 CALL TO ORDER - 6:00 P.M. – Pledge of Allegiance**
- 2.0 PUBLIC COMMENT**
- 3.0 SPECIAL APPEARANCES/PUBLIC HEARINGS – None**

4.0 CONSENT AGENDA

These items are considered to be routine and will be enacted in one motion. There will be no separate discussion of these items unless a Councilmember or citizen so requests, in which event the item will be removed from the Consent Agenda and considered in normal sequence. (All items listed on the Consent Agenda are recommended for approval.)

- 4.1 Approval of minutes of November 1, 2021
- 4.2 Approval of claims
- 4.3 Approval of a Resolution scheduling a public hearing vacating a portion of the drainage and utility easement in Section 13

5.0 PLANNING COMMISSION RECOMMENDATIONS – None

6.0 ECONOMIC DEVELOPMENT AUTHORITY – None

7.0 APPEARANCES – None

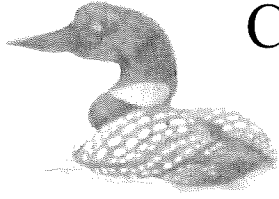
8.0 CITY ATTORNEY

9.0 CITY ENGINEER – None

10.0 CITY ADMINISTRATOR

11.0 COUNCIL BUSINESS

- 11.1 Committee Reports
- 11.2 Announcements and future agenda items



CITY OF HAM LAKE

15544 Central Avenue NE
Ham Lake, Minnesota 55304
(763) 434-9555
Fax: (763) 434-9599

CITY OF HAM LAKE CITY COUNCIL AND ECONOMIC DEVELOPMENT AUTHORITY MINUTES MONDAY, NOVEMBER 1, 2021

The Ham Lake City Council and Economic Development Authority met for its regular meeting on Monday, November 1, 2021 at 6:00 p.m. in the Council Chambers at the Ham Lake City Hall located at 15544 Central Avenue NE in Ham Lake, Minnesota.

MEMBERS PRESENT: Mayor Mike Van Kirk and Councilmembers Jim Doyle, Gary Kirkeide, Brian Kirkham and Jesse Wilken

MEMBERS ABSENT: None

OTHERS PRESENT: City Attorney, Joe Murphy; City Engineer, Tom Collins; City Administrator, Denise Webster; and Deputy City Clerk, Dawnette Shimek

1.0 CALL TO ORDER - 6:00 P.M. – Pledge of Allegiance

Mayor Van Kirk called the meeting to order and the Pledge of Allegiance was recited by all in attendance.

2.0 PUBLIC COMMENT – None

3.0 SPECIAL APPEARANCES/PUBLIC HEARINGS - None

4.0 CONSENT AGENDA

These items are considered to be routine and will be enacted in one motion. There will be no separate discussion of these items unless a Councilmember or citizen so requests, in which event the item will be removed from the Consent Agenda and considered in normal sequence. (All items listed on the Consent Agenda are recommended for approval.)

4.1 Approval of minutes of October 18, 2021

4.2 Approval of claims in the amount of \$148,129.66

4.3 Approval of a request from Chad Johnson for a Metes and Bounds Conveyance/Courtesy Combination in Section 13

4.4 Approval of Resolution No. 21-39 amending the Internal Control Policy

4.5 Approval of the classification and sale of the tax forfeited parcel PIN 02-32-23-33-0032

4.6 Approval of the Building Destruction Agreement for 13625 Buchanan Street NE

4.7 Approval of the contract with Embedded Systems for the maintenance and monitoring of the radio equipment for the outdoor warning sirens

Motion by Kirkham, seconded by Doyle, to approve the November 1, 2021 Consent Agenda as written. All in favor, motion carried.

5.0 PLANNING COMMISSION RECOMMENDATIONS - None

6.0 ECONOMIC DEVELOPMENT AUTHORITY - None

7.0 APPEARANCES - None

8.0 CITY ATTORNEY

8.1 Discussion of Tower Lease Extension – Verizon – Cell Tower #1

Attorney Murphy stated that the City Council would be approving a Second Amendment to the Tower Lease Agreement with Verizon. This agreement pertains to Cell Tower #1 located next to City Hall and operated by Crown Castle. This proposed extension applies only to Verizon, one of the renters/users of space on the Crown Castle Tower. The extension of the lease is for 20 years (until May 2042); a continuation of the current rent increase of 3% per year, but an elimination of the potential of up to a 5% increase for those years where the Consumer Price Index (CPI) increases more than 3%; updating the mailing address for Verizon Wireless; and a provision that all other terms of the original agreement remain unchanged. **Motion by Van Kirk, seconded by Kirkeide, to approve the Tower Lease Extension language as proposed for Verizon – Cell Tower #1. All in favor, motion carried.**

9.0 CITY ENGINEER – None

10.0 CITY ADMINISTRATOR – None

11.0 COUNCIL BUSINESS

11.1 Committee Reports – None

11.2 Announcements and future agenda items

Councilmember Kirkeide stated that the Northstar Corridor is hemorrhaging of funds and ridership is down 95%. The cost one-way for one-person is \$97.00. Councilmember Kirkeide stated that a resolution was passed in 2003 (Resolution No. 03-12) stating that the Ham Lake City Council does not support the establishment of the Northstar Commuter Rail Line.

Motion by Kirkeide, seconded by Kirkham, to adjourn the meeting at 6:06 p.m. All in favor, motion carried.

Dawnette Shimek, Deputy City Clerk

**CITY OF HAM LAKE
CLAIMS SUBMITTED TO COUNCIL
November 15, 2021**

CITY OF HAM LAKE

EFTS, CHECKS, AND BANK DRAFTS	11/4/21 - 11/17/21	
EFT	# 1523 - 1561	\$ 50,571.67
CHECKS	# 63449 - 63492	\$ 264,485.85
BANK DRAFTS	DFT0002277 - DFT0002282	\$ 23,684.87
TOTAL EFTS, CHECKS, AND BANK DRAFTS		<u>\$ 338,742.39</u>
PAYROLL CHECKS		
11/05/21		\$ 34,171.08
TOTAL PAYROLL CHECKS		<u>\$ 34,171.08</u>
TOTAL OF ALL PAYMENTS		<u><u>\$ 372,913.47</u></u>
VOID CHECKS		
CHECKS	#63443 - 63448	\$ -
		\$ -
		\$ -

APPROVED BY THE HAM LAKE CITY COUNCIL THIS 15TH DAY OF NOVEMBER 2021

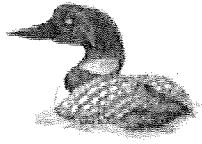
MAYOR

COUNCILMEMBER

COUNCILMEMBER

COUNCILMEMBER

COUNCILMEMBER



Payment Dates 11/4/2021 - 11/17/2021

Payment Number	Vendor Name	Description (Item)	Account Name	Account Number	Amount
1553	OPTUM BANK - 6011	Health Savings Account-6011	Flexible spending	100-21705	54.17
1554	WELLS FARGO - 6003	Health Savings Account-6003	Flexible spending	100-21705	125.00
1555	ARAMARK UNIFORM & CAREE	PW UNIFORMS	Clothing & personal protectiv	100-43101-2210	110.20
1555	ARAMARK UNIFORM & CAREE	FIRST AID CABINET	Safety supplies	100-43101-2240	12.00
1556	FASTENAL	FASTENERS	Operating supplies	100-43101-2290	4.60
1557	O'REILLY AUTOMOTIVE STORE	OIL FILTER	Operating supplies	100-43101-2290	6.59
1557	O'REILLY AUTOMOTIVE STORE	OIL FILTERS	Operating supplies	100-43101-2290	13.18
1557	O'REILLY AUTOMOTIVE STORE	MARKER LIGHTS	Operating supplies	100-43101-2290	30.18
1557	O'REILLY AUTOMOTIVE STORE	WIRE LOOM	Operating supplies	100-43101-2290	17.50
1557	O'REILLY AUTOMOTIVE STORE	T-3 PUMP PLUG	Equipment parts & supplies	100-42201-2320	3.99
1558	RFC ENGINEERING, INC.	ABERDEEN, 144TH - 145TH	Engineering	431-43301-3135	1,657.32
1558	RFC ENGINEERING, INC.	155TH, NAPLES - LEXINGTON	Engineering	431-43301-3135	1,007.68
1558	RFC ENGINEERING, INC.	TWIN BIRCH ACRES	Engineering	431-43301-3135	2,910.32
1558	RFC ENGINEERING, INC.	LUND'S LAKEVIEW FOREST	Engineering	431-43301-3135	17,411.08
1558	RFC ENGINEERING, INC.	153RD AVE SIREN	Engineering	100-41101-3135	53.80
1558	RFC ENGINEERING, INC.	STREET LIGHT POLICY	Engineering	100-41101-3135	13.45
1558	RFC ENGINEERING, INC.	ANOKA COUNTY GIS DATA EX	Engineering	100-41101-3135	33.90
1558	RFC ENGINEERING, INC.	AMERICAN RESCUE PLAN STO	Engineering	100-41101-3135	40.35
1558	RFC ENGINEERING, INC.	05-32-23-34-0050 TOWER	Engineering	100-41101-3135	40.35
1558	RFC ENGINEERING, INC.	COUNCIL MEETING	Engineering	100-41101-3135	378.74
1558	RFC ENGINEERING, INC.	COMP PLAN UPDATE	Engineering-comprehensive p	100-41101-3136	577.91
1558	RFC ENGINEERING, INC.	ZONING MAP	Engineering	100-41601-3135	137.75
1558	RFC ENGINEERING, INC.	13-32-23-42-0002 LOT LINE A	Engineering	100-41601-3135	215.21
1558	RFC ENGINEERING, INC.	1347 - 159TH AVE	Engineering	100-41601-3135	26.90
1558	RFC ENGINEERING, INC.	PLANNING COMMISSION MEE	Engineering	100-41601-3135	67.26
1558	RFC ENGINEERING, INC.	PLANNING/POTENTIAL DEVEL	Engineering	100-41601-3135	419.09
1558	RFC ENGINEERING, INC.	L6 B1 STOPHER ADD. WETLAN	Engineering	100-42401-3135	199.49
1558	RFC ENGINEERING, INC.	HAM LAKE BUILDING PERMIT	Engineering	100-42401-3135	116.53
1558	RFC ENGINEERING, INC.	L4 B1 HARMONY EST WELL	Engineering	100-42401-3135	53.80
1558	RFC ENGINEERING, INC.	L8 B8 BIRCH VIEW ACRES BUIL	Engineering	100-42401-3135	40.35
1558	RFC ENGINEERING, INC.	3571 INTERLACHEN DRIVE	Engineering	100-42401-3135	49.26
1558	RFC ENGINEERING, INC.	PW TRAFFIC SIGN POLICY	Engineering	100-43101-3135	26.90
1558	RFC ENGINEERING, INC.	02-32-33-33-0032 TAX FORFEI	Engineering	100-43103-3135	53.80
1558	RFC ENGINEERING, INC.	CCWD RULES AMENDMENTS	Engineering	100-43201-3135	781.79
1558	RFC ENGINEERING, INC.	CCWD JURISDICTIONAL BOUD	Engineering	100-43201-3135	18.85
1558	RFC ENGINEERING, INC.	NPDES	Engineering	230-43201-3135	75.04
1558	RFC ENGINEERING, INC.	FIRE STATION #3	Capital assets	420-42201-5110	54.59
1558	RFC ENGINEERING, INC.	2021 REHAB	Engineering	431-43301-3135	40.35
1558	RFC ENGINEERING, INC.	181ST, CONCORD - HWY 65	Engineering	431-43301-3135	269.02
1558	RFC ENGINEERING, INC.	COPART	Engineering	431-43301-3135	121.06
1558	RFC ENGINEERING, INC.	CROSSTOWN ROLLING ACRES	Engineering	890-90001-3135	3,983.78
1558	RFC ENGINEERING, INC.	HIDDEN FOREST EAST 3RD	Engineering	890-90001-3135	750.76
1558	RFC ENGINEERING, INC.	CREEKSIDE FARMS	Engineering	890-90001-3135	596.73
1558	RFC ENGINEERING, INC.	ENTSMINGER FARMS	Engineering	890-90001-3135	269.02
1558	RFC ENGINEERING, INC.	EVERGREEN ESTATES	Engineering	890-90001-3135	330.34
1558	RFC ENGINEERING, INC.	HIDDEN FOREST EAST PARK	Engineering	890-90001-3135	352.62
1558	RFC ENGINEERING, INC.	ENCHANTED ESTATES 3RD	Engineering	890-90001-3135	367.13
1558	RFC ENGINEERING, INC.	CROSSTOWN ROLLING ACRES	Engineering	890-90001-3135	448.73
1558	RFC ENGINEERING, INC.	CONSTANCE BOULEVARD TER	Engineering	890-90001-3135	262.75
1558	RFC ENGINEERING, INC.	15861 LOT SPLIT	Engineering	890-90001-3135	161.41
1558	RFC ENGINEERING, INC.	L4 B1 HAM LAKE IND'L PARK 4	Engineering	890-90001-3135	215.22
1558	RFC ENGINEERING, INC.	HIDDEN FOREST EAST 2ND	Engineering	890-90001-3135	240.97
1558	RFC ENGINEERING, INC.	LIVE WIRE ELECTRIC	Engineering	890-90001-3135	26.90
1558	RFC ENGINEERING, INC.	RYLIE'S WAY	Engineering	890-90001-3135	43.60

Council Approval List

Payment Dates: 11/4/2021 - 11/17/2021

Payment Number	Vendor Name	Description (Item)	Account Name	Account Number	Amount
1558	RFC ENGINEERING, INC.	WHITETAIL CROSSING 2ND	Engineering	890-90001-3135	132.20
1558	RFC ENGINEERING, INC.	NETTAS PRESERVE	Engineering	890-90001-3135	79.95
1558	RFC ENGINEERING, INC.	HOLIDAY	Engineering	890-90001-3135	93.02
1558	RFC ENGINEERING, INC.	GROWING GENERATIONS	Engineering	890-90001-3135	66.12
1558	RFC ENGINEERING, INC.	GALLAGHER SHORES	Engineering	890-90001-3135	103.55
1558	RFC ENGINEERING, INC.	MEADOW PARK RECONSTRUC	Engineering	431-43301-3135	1,376.58
1558	RFC ENGINEERING, INC.	GROUP PERMIT BILLING	Engineering	100-43501-3135	6,403.69
1558	RFC ENGINEERING, INC.	TWIN BIRCH ACRES ROW2021	Engineering	431-43301-3135	26.90
1558	RFC ENGINEERING, INC.	TWIN BIRCH ACRES ROW2020	Engineering	431-43301-3135	26.90
1558	RFC ENGINEERING, INC.	LUNDS LAKEVIEW ROW2021-	Engineering	431-43301-3135	13.45
1558	RFC ENGINEERING, INC.	LUNDS LAKEVIEW ROW2021-	Engineering	431-43301-3135	134.51
1558	RFC ENGINEERING, INC.	CREEK VALLEY RECONSTRUCTI	Engineering	431-43301-3135	108.11
1558	RFC ENGINEERING, INC.	MSA GROUP BILLING	Engineering	431-43301-3135	941.91
1558	RFC ENGINEERING, INC.	POLK STREET	Engineering	431-43301-3135	1,350.84
1558	RFC ENGINEERING, INC.	TIPPECANOE STREET	Engineering	431-43301-3135	2,233.45
1558	RFC ENGINEERING, INC.	CROSTOWN BUSINESS PARK	Capital assets	262-46101-5110	1,361.10
1560	STAR TRIBUNE MEDIA COMPA	ORD 21-13 CD-1 USES	Legal notices/publications/bid	100-41102-3950	102.18
1560	STAR TRIBUNE MEDIA COMPA	RICHLAND REFRIGERATION	Legal notices/publications/bid	890-90001-3950	52.40
1561	WRUCK SEWER & PORTABLE	TWIN BIRCH PARK TOILET REN	Rentals-other	100-44101-3390	11.37
1561	WRUCK SEWER & PORTABLE	PATRICIA'S WILDERNESS TOILE	Rentals-other	100-44101-3390	11.37
1561	WRUCK SEWER & PORTABLE	PINGER'S PARK TOILET RENTA	Rentals-other	100-44101-3390	11.37
1561	WRUCK SEWER & PORTABLE	HAM LAKE BALL FIELD TOILET	Rentals-other	100-44101-3390	19.75
1561	WRUCK SEWER & PORTABLE	CONSTANCE ESTATES PARK TO	Rentals-other	100-44101-3390	22.75
1561	WRUCK SEWER & PORTABLE	LUND'S PINE CREEK	Rentals-other	100-44101-3390	22.75
1561	WRUCK SEWER & PORTABLE	LARSON'S HERITAGE OAKS TOI	Rentals-other	100-44101-3390	22.75
1561	WRUCK SEWER & PORTABLE	SODERVILLE PARK TOILET REN	Rentals-other	100-44101-3390	27.00
1561	WRUCK SEWER & PORTABLE	TENNIS COURT TOILET RENTA	Rentals-other	100-44101-3390	54.00
1561	WRUCK SEWER & PORTABLE	LION'S PARK TOILET RENTALS	Rentals-other	100-44101-3390	79.00
1561	WRUCK SEWER & PORTABLE	LION'S PARK PLAYGROUND TO	Rentals-other	100-44101-3390	79.00
1561	WRUCK SEWER & PORTABLE	BLUEGRASS ESTATES TOILET R	Rentals-other	100-44101-3390	22.75
1561	WRUCK SEWER & PORTABLE	HAM LAKE BOAT LANDING TO	Rentals-other	100-44101-3390	79.00
1561	WRUCK SEWER & PORTABLE	WISEN'S PARK TOILET RENTAL	Rentals-other	100-44101-3390	11.37
1561	WRUCK SEWER & PORTABLE	PATRICIA'S WILDERNESS TOILE	Reimbursable expense	100-48101-4150	11.38
1561	WRUCK SEWER & PORTABLE	WISEN'S PARK TOILET RENTAL	Reimbursable expense	100-48101-4150	11.38
1561	WRUCK SEWER & PORTABLE	PINGER'S PARK TOILET RENTA	Reimbursable expense	100-48101-4150	11.38
1561	WRUCK SEWER & PORTABLE	HAM LAKE BALL FIELD TOILET	Reimbursable expense	100-48101-4150	19.75
1561	WRUCK SEWER & PORTABLE	LION'S PARK TOILET RENTALS	Reimbursable expense	100-48101-4150	79.00
1561	WRUCK SEWER & PORTABLE	TWIN BIRCH PARK TOILET REN	Reimbursable expense	100-48101-4150	11.38
1561	WRUCK SEWER & PORTABLE	SODERVILLE PARK TOILET REN	Reimbursable expense	100-48101-4150	27.00
63449	ACE SOLID WASTE INC	NOV ORGANICS	Waste management & recycli	231-43601-3630	295.69
63450	ACE SOLID WASTE INC	OCT YARDWASTE	Waste management & recycli	231-43601-3630	2,393.59
63451	ADVANTAGE SIGNS & GRAPHI	STOP SIGN BRACKETS	Street signs	100-43401-2250	106.44
63452	ANOKA COUNTY PROPERTY	DARSOW DRIVEWAY LICENSE	Refunds & reimbursements	100-37601	46.00
63452	ANOKA COUNTY PROPERTY	OHNESORGE DRIVEWAY LICE	Refunds & reimbursements	100-37601	46.00
63452	ANOKA COUNTY PROPERTY	COPART EASEMENT	Filing fees	100-41101-3980	46.00
63452	ANOKA COUNTY PROPERTY	COPART POND EASEMENT	Filing fees	100-41101-3980	46.00
63453	CARSON, CLELLAND, & SCHRE	QUIET TITLE ACTION FILING F	Attorney	100-41101-3110	303.00
63453	CARSON, CLELLAND, & SCHRE	COUNCIL MEETINGS	Attorney	100-41101-3110	180.00
63453	CARSON, CLELLAND, & SCHRE	TOWER LEASES	Attorney	100-41101-3110	140.00
63453	CARSON, CLELLAND, & SCHRE	HAM LAKE IND'L PARK	Attorney	100-41101-3110	52.50
63453	CARSON, CLELLAND, & SCHRE	15926 TIPPECANOE	Attorney	100-41101-3110	35.00
63453	CARSON, CLELLAND, & SCHRE	QUIET TITLE ACTION	Attorney	100-41101-3110	175.00
63453	CARSON, CLELLAND, & SCHRE	ZONING CODE	Attorney	100-41102-3110	140.00
63453	CARSON, CLELLAND, & SCHRE	PROSECUTIONS	Attorney	100-41501-3110	6,500.00
63453	CARSON, CLELLAND, & SCHRE	FIRE REPORTS	Attorney	100-42201-3110	70.00
63453	CARSON, CLELLAND, & SCHRE	155TH, NAPLES-LEXINGTON S	Attorney	431-43301-3110	105.00
63453	CARSON, CLELLAND, & SCHRE	COPART- LICENSE AGREEMEN	Attorney	431-43301-3110	105.00
63453	CARSON, CLELLAND, & SCHRE	15941 TIPPECANOE - EASEME	Attorney	431-43301-3110	35.00
63453	CARSON, CLELLAND, & SCHRE	LA MACHINE SHOP	Attorney	890-90001-3110	35.00
63453	CARSON, CLELLAND, & SCHRE	CROSTOWN ROLLING ACRES	Attorney	890-90001-3110	70.00

Council Approval List

Payment Dates: 11/4/2021 - 11/17/2021

Payment Number	Vendor Name	Description (Item)	Account Name	Account Number	Amount
63454	CENTERPOINT ENERGY	CITY HALL	Natural gas	100-41702-3620	88.03
63454	CENTERPOINT ENERGY	FIRE #1	Natural gas	100-42202-3620	29.52
63454	CENTERPOINT ENERGY	FIRE #2	Natural gas	100-42202-3620	114.89
63454	CENTERPOINT ENERGY	PW	Natural gas	100-43104-3620	71.52
63454	CENTERPOINT ENERGY	H.L. PARK PAVILION	Natural gas	100-44102-3620	27.66
63454	CENTERPOINT ENERGY	H.L. PARK BUILDING	Natural gas	100-44102-3620	64.45
63454	CENTERPOINT ENERGY	SR CENTER	Natural gas	100-44202-3620	47.40
63455	CENTURY COLLEGE	COMPANY OFFICER FUNCTIO	Training/conferences/schools	100-42201-3510	450.00
63455	CENTURY COLLEGE	DISCRIMINATION & HARASSM	Training/conferences/schools	100-42201-3510	450.00
63456	CITY OF ROSEVILLE	2021 DW LASERFICHE & ADO	Software licenses & upgrades	100-41201-2510	19.33
63456	CITY OF ROSEVILLE	2021 DS, SHARED LASERFICHE	Software licenses & upgrades	100-41301-2510	477.58
63456	CITY OF ROSEVILLE	2021 AW, SK LASERFICHE & A	Software licenses & upgrades	100-41401-2510	24.92
63456	CITY OF ROSEVILLE	2021 JB LASERFICHE & ADOBE	Software licenses & upgrades	100-41601-2510	19.33
63456	CITY OF ROSEVILLE	PHONES	Phones/radios/pagers	100-41701-3210	115.83
63456	CITY OF ROSEVILLE	IT SERVICE	Computer & software support	100-41707-3120	3,499.60
63456	CITY OF ROSEVILLE	2021 TM LASERFICHE & ADOB	Software licenses & upgrades	100-42201-2510	24.92
63456	CITY OF ROSEVILLE	PHONES	Phones/radios/pagers	100-42201-3210	64.25
63456	CITY OF ROSEVILLE	2021 NW, TD LASERFICHE & A	Software licenses & upgrades	100-42401-2510	44.25
63456	CITY OF ROSEVILLE	PHONES	Phones/radios/pagers	100-42401-3210	102.83
63456	CITY OF ROSEVILLE	2021 JW ADOBE LICENSE	Software licenses & upgrades	100-43101-2510	5.58
63456	CITY OF ROSEVILLE	PHONES	Phones/radios/pagers	100-43101-3210	64.25
63456	CITY OF ROSEVILLE	PHONES	Phones/radios/pagers	100-44101-3210	12.83
63456	CITY OF ROSEVILLE	PHONES	Phones/radios/pagers	100-44201-3210	51.42
63457	COMMERCIAL ASPHALT CO.	50.37 TONS HOTMIX	Street repair & maintenance s	100-43101-2330	3,165.76
63458	CONNEXUS ENERGY	GARAGE	Electricity	100-41702-3610	34.77
63458	CONNEXUS ENERGY	CITY HALL	Electricity	100-41702-3610	818.36
63458	CONNEXUS ENERGY	CITY SIGN	Electricity	100-41703-3610	97.61
63458	CONNEXUS ENERGY	SOUTH WELCOME	Electricity	100-41703-3610	14.72
63458	CONNEXUS ENERGY	FIRE #1	Electricity	100-42202-3610	370.41
63458	CONNEXUS ENERGY	FIRE #2	Electricity	100-42202-3610	203.22
63458	CONNEXUS ENERGY	SIRENS	Electricity	100-42302-3610	65.00
63458	CONNEXUS ENERGY	PW	Electricity	100-43104-3610	785.92
63458	CONNEXUS ENERGY	CROSSTOWN/HWY 65 SIGNAL	Electricity	100-43401-3610	73.39
63458	CONNEXUS ENERGY	STREET LIGHTS #2	Electricity	100-43401-3610	277.23
63458	CONNEXUS ENERGY	HWY 65/CONSTANCE SIGNALS	Electricity	100-43401-3610	112.71
63458	CONNEXUS ENERGY	HWY 65/ANDOVER BLVD SIGN	Electricity	100-43401-3610	73.75
63458	CONNEXUS ENERGY	BUNKER/LEXINGTON SIGNALS	Electricity	100-43401-3610	64.76
63458	CONNEXUS ENERGY	BUNKER/JEFFERSON SIGNALS	Electricity	100-43401-3610	64.30
63458	CONNEXUS ENERGY	HWY 65/BUNKER SIGNALS	Electricity	100-43401-3610	81.40
63458	CONNEXUS ENERGY	RADISSON/BUNKER SIGNALS	Electricity	100-43401-3610	75.58
63458	CONNEXUS ENERGY	STREET LIGHTS #1	Electricity	100-43401-3610	25.12
63458	CONNEXUS ENERGY	LEXINGTON/CROSSTOWN SIG	Electricity	100-43401-3610	49.11
63458	CONNEXUS ENERGY	HAM LAKE PARK	Electricity	100-44101-3610	108.08
63458	CONNEXUS ENERGY	SODERVILLE PARK WELL	Electricity	100-44101-3610	13.50
63458	CONNEXUS ENERGY	SODERVILLE PARK	Electricity	100-44101-3610	37.40
63458	CONNEXUS ENERGY	HAM LAKE PARK SHELTER	Electricity	100-44102-3610	28.81
63458	CONNEXUS ENERGY	HAM LAKE PARK BUILDING	Electricity	100-44102-3610	63.46
63458	CONNEXUS ENERGY	HAM LAKE PARK CONCESSION	Electricity	100-44102-3610	117.05
63458	CONNEXUS ENERGY	LION'S PARK CONCESSION	Electricity	100-44102-3610	82.17
63458	CONNEXUS ENERGY	LION'S PARK PAVILION	Electricity	100-44102-3610	105.74
63458	CONNEXUS ENERGY	SR CENTER	Electricity	100-44202-3610	440.66
63458	CONNEXUS ENERGY	STREET LIGHTS	Electricity	232-43701-3610	4,417.70
63460	COTTENS' ANOKA INC	#48, #49, #58 FLARE KIT	Capital assets	430-43101-5110	51.99
63461	DEHN OIL CO	387 GAL GASOLINE	Fuel	100-43101-2230	1,128.11
63461	DEHN OIL CO	425 GAL DIESEL	Fuel	100-43101-2230	1,262.25
63462	EMERGENCY APPARATUS MTC	A1 LADDER SERVICE	Fire apparatus repair & maint	100-42201-3450	333.18
63462	EMERGENCY APPARATUS MTC	G-2 CARBURETOR/FUEL CAP	Fire apparatus repair & maint	100-42201-3450	765.00
63463	EMERGENCY AUTOMOTIVE TE	#48, #49, #58 LIGHT MOUNT	Capital assets	430-43101-5110	174.00
63464	FLEETPRIDE	FILTERS	Operating supplies	100-43101-2290	195.18
63464	FLEETPRIDE	FILTER	Operating supplies	100-43101-2290	9.56

Council Approval List

Payment Dates: 11/4/2021 - 11/17/2021

Payment Number	Vendor Name	Description (Item)	Account Name	Account Number	Amount
63464	FLEETPRIDE	FILTER	Operating supplies	100-43101-2290	4.78
63464	FLEETPRIDE	FILTERS	Operating supplies	100-43101-2290	186.70
63464	FLEETPRIDE	PLOW TRUCK TRANS FILTERS	Vehicle parts & supplies	100-43101-2340	37.00
63465	GRATITUDE FARMS	OCT ANIMAL CONTROL	Other professional services	100-42501-3190	250.00
63466	HAM LAKE HARDWARE INC	SPRAY PAINT FOR UTILITIES	Operating supplies	100-43101-2290	13.98
63466	HAM LAKE HARDWARE INC	ANTIFREEZE	Building repair & maintenanc	100-44102-2310	17.94
63466	HAM LAKE HARDWARE INC	SPRAY PAINT	Operating supplies	100-43102-2290	7.49
63467	HANSEN BROTHERS FENCE IN	TENNIS COURT FENCE	Capital assets	440-44103-5110	17,470.00
63468	INT'L INSTITUTE OF MUNICIPA	2022 MEMBERSHIP DUES - D	Prepaid expense	100-15501	175.00
63469	LINCOLN NATIONAL LIFE INSU	DEC ST DISABILITY	Other payroll deductions	100-21706	772.97
63469	LINCOLN NATIONAL LIFE INSU	DEC LT DISABILITY	Other payroll deductions	100-21706	408.43
63470	MARK JONES	BUILDING DEPARTMENT SUPP	Operating supplies	100-42401-2290	74.97
63471	MCCLELLAN SALES INC	SWEATSHIRTS	Clothing & personal protectiv	100-44101-2210	126.00
63471	MCCLELLAN SALES INC	RETURNED SWEATSHIRTS & J	Clothing & personal protectiv	100-44101-2210	-100.20
63472	METRO SALES INC	8/6 - 11/5 COPIER LEASE	Equipment rentals	100-41701-3320	993.78
63472	METRO SALES INC	8/6 - 11/5 COLOR COPIES	Equipment rentals	100-41701-3320	191.31
63472	METRO SALES INC	8/6 - 11/5 COLOR COPIES	Equipment rentals	100-42401-3320	341.77
63472	METRO SALES INC	8/6 - 11/5 COPIER LEASE	Equipment rentals	100-42401-3320	774.54
63473	MINNESOTA EQUIPMENT	#47 SLOW MOVING VEHICLE S	Equipment parts & supplies	100-44101-2320	15.25
63474	MN METRO NORTH TOURISM	SEPT LODGING TAX	Convention bureau	263-46101-4120	2,385.08
63475	MN PEIP	DEC HEALTH INSURANCE	Flexible spending	100-21705	13,309.12
63476	NCPERS GROUP LIFE INSURAN	NOV LIFE	Other payroll deductions	100-21706	112.00
63477	NEW BRIGHTON FORD	#84 ROTOR ASY & PAD	Vehicle parts & supplies	100-42401-2340	190.47
63478	NEW LOOK CONTRACTING IN	TWIN BIRCH ACRES	Contractors	431-43301-3810	158,099.36
63479	PARK SUPPLY OF AMERICA IN	FIRE #2 URINAL PARTS	Building repair & maintenanc	100-42202-2310	134.05
63480	PAVEMENT RESOURCES	EMULSION	Street repair & maintenance s	100-43101-2330	481.25
63481	PREMIUM WATERS INC	NOV WATER COOLER RENTAL	Equipment rentals	100-41701-3320	14.00
63481	PREMIUM WATERS INC	OCT WATER	Equipment rentals	100-41701-3320	27.75
63482	S & S INDUSTRIAL SUPPLY INC	SCREWS, TAP PLUG	Operating supplies	100-44101-2290	21.12
63483	SUMMIT COMPANIES	FIRE TRUCK EXTINGUISHER SE	Equipment repair & maintena	100-42201-3440	129.00
63483	SUMMIT COMPANIES	FIRE TRUCK EXTINGUISHER SE	Equipment repair & maintena	100-42201-3440	-129.00
63483	SUMMIT COMPANIES	FIRE TRUCK EXTINGUISHER SE	Equipment repair & maintena	100-42201-3440	99.00
63484	TDS METROCOM INC	763-434-0454 ELEVATOR	Phones/radios/pagers	100-41701-3210	39.41
63484	TDS METROCOM INC	763-434-9605 FIRE #2	Phones/radios/pagers	100-42201-3210	37.41
63485	TRI STATE BOBCAT, INC.	BRUSH MOWER BLADES	Equipment parts & supplies	100-43101-2320	202.95
63486	TURFWERKS	#65 FILTERS	Equipment parts & supplies	100-44101-2320	344.99
63487	TYLER TECHNOLOGIES INC	A/R TRAINING	Capital assets	410-41701-5110	735.00
63487	TYLER TECHNOLOGIES INC	A/R TRAINING	Capital assets	410-41701-5110	105.00
63488	UNLIMITED SUPPLIES INC	NUTS, WASHERS, BOLTS	Operating supplies	100-43101-2290	54.34
63489	VEIT & COMPANY INC	LUND'S LAKEVIEW FOREST	Contractors	431-43301-3810	33,017.99
63490	VERIZON WIRELESS	612-916-1358 SR CTR	Phones/radios/pagers	100-44201-3210	8.60
63491	VERIZON WIRELESS	MR	Phones/radios/pagers	100-42201-3210	41.25
63491	VERIZON WIRELESS	TD, MJ, TK & 2 LAPTOPS	Phones/radios/pagers	100-42401-3210	208.77
63491	VERIZON WIRELESS	JK, JW,CH, CS, EH, & 2 LAPTOP	Phones/radios/pagers	100-43101-3210	294.26
63491	VERIZON WIRELESS	DH, AC	Phones/radios/pagers	100-44101-3210	82.50
63492	WRIGHT-HENNEPIN COOPERA	NOV SECURITY MONITORING	Monitoring	100-41702-3145	32.95
63492	WRIGHT-HENNEPIN COOPERA	NOV ELEVATOR MONITORING	Monitoring	100-41702-3145	10.00
63492	WRIGHT-HENNEPIN COOPERA	NOV PW FIRE PANEL MONITO	Monitoring	100-43104-3145	52.95
DFT0002277	EMPOWER	Deferred Compensation	Deferred compensation	100-21704	1,600.00
DFT0002277	EMPOWER	Roth IRA	Deferred compensation	100-21704	100.00
DFT0002278	IRS-Payroll Tax	Federal Withholding	Federal WH/FICA/MC	100-21701	4,772.21
DFT0002278	IRS-Payroll Tax	Medicare Payable	Federal WH/FICA/MC	100-21701	1,470.12
DFT0002278	IRS-Payroll Tax	Social Security Payable	Federal WH/FICA/MC	100-21701	5,842.38
DFT0002279	MN STATE DEPT OF REVENUE-	MN State Withholding	State W/H	100-21702	2,174.17
DFT0002280	PERA	Retirement-Coordinated	PERA	100-21703	6,621.07
DFT0002280	PERA	Retirement-Police & Fire	PERA	100-21703	1,055.33
DFT0002282	MN STATE DEPT OF REVENUE-	OCTOBER FUEL TAX	Fuel	100-43101-2230	49.59
Grand Total:					338,742.39

Report Summary

Fund Summary

Fund	Payment Amount
100 - GENERAL	79,549.58
230 - FUTURE DRAINAGE	75.04
231 - RECYCLING	2,689.28
232 - STREET LIGHT	4,417.70
262 - HAM LAKE EDA	1,361.10
263 - LODGING TAX	2,385.08
410 - GENERAL GOV'T EQUIPMENT	840.00
420 - FIRE EQUIPMENT	54.59
430 - PUBLIC WORKS EQUIPMENT	225.99
431 - REVOLVING STREET	220,991.83
440 - PARK & BEACH LAND	17,470.00
890 - TRUST FUND	8,682.20
Grand Total:	338,742.39

Account Summary

Account Number	Account Name	Payment Amount
100-15501	Prepaid expense	175.00
100-21701	Federal WH/FICA/MC	12,084.71
100-21702	State W/H	2,174.17
100-21703	PERA	7,676.40
100-21704	Deferred compensation	1,700.00
100-21705	Flexible spending	13,488.29
100-21706	Other payroll deductions	1,293.40
100-37601	Refunds & reimburseme	92.00
100-41101-3110	Attorney	885.50
100-41101-3135	Engineering	560.59
100-41101-3136	Engineering-comprehen	577.91
100-41101-3980	Filing fees	92.00
100-41102-3110	Attorney	140.00
100-41102-3950	Legal notices/publicatio	102.18
100-41201-2510	Software licenses & upgr	19.33
100-41301-2510	Software licenses & upgr	477.58
100-41401-2510	Software licenses & upgr	24.92
100-41501-3110	Attorney	6,500.00
100-41601-2510	Software licenses & upgr	19.33
100-41601-3135	Engineering	866.21
100-41701-3210	Phones/radios/pagers	155.24
100-41701-3320	Equipment rentals	1,226.84
100-41702-3145	Monitoring	42.95
100-41702-3610	Electricity	853.13
100-41702-3620	Natural gas	88.03
100-41703-3610	Electricity	112.33
100-41707-3120	Computer & software su	3,499.60
100-42201-2320	Equipment parts & suppl	3.99
100-42201-2510	Software licenses & upgr	24.92
100-42201-3110	Attorney	70.00
100-42201-3210	Phones/radios/pagers	142.91
100-42201-3440	Equipment repair & mai	99.00
100-42201-3450	Fire apparatus repair &	1,098.18
100-42201-3510	Training/conferences/sc	900.00
100-42202-2310	Building repair & mainte	134.05
100-42202-3610	Electricity	573.63
100-42202-3620	Natural gas	144.41
100-42302-3610	Electricity	65.00
100-42401-2290	Operating supplies	74.97
100-42401-2340	Vehicle parts & supplies	190.47
100-42401-2510	Software licenses & upgr	44.25

Account Summary

Account Number	Account Name	Payment Amount
100-42401-3135	Engineering	459.43
100-42401-3210	Phones/radios/pagers	311.60
100-42401-3320	Equipment rentals	1,116.31
100-42501-3190	Other professional servi	250.00
100-43101-2210	Clothing & personal prot	110.20
100-43101-2230	Fuel	2,439.95
100-43101-2240	Safety supplies	12.00
100-43101-2290	Operating supplies	536.59
100-43101-2320	Equipment parts & suppl	202.95
100-43101-2330	Street repair & mainten	3,647.01
100-43101-2340	Vehicle parts & supplies	37.00
100-43101-2510	Software licenses & upgr	5.58
100-43101-3135	Engineering	26.90
100-43101-3210	Phones/radios/pagers	358.51
100-43102-2290	Operating supplies	7.49
100-43103-3135	Engineering	53.80
100-43104-3145	Monitoring	52.95
100-43104-3610	Electricity	785.92
100-43104-3620	Natural gas	71.52
100-43201-3135	Engineering	800.64
100-43401-2250	Street signs	106.44
100-43401-3610	Electricity	897.35
100-43501-3135	Engineering	6,403.69
100-44101-2210	Clothing & personal prot	25.80
100-44101-2290	Operating supplies	21.12
100-44101-2320	Equipment parts & suppl	360.24
100-44101-3210	Phones/radios/pagers	95.33
100-44101-3390	Rentals-other	474.23
100-44101-3610	Electricity	158.98
100-44102-2310	Building repair & mainte	17.94
100-44102-3610	Electricity	397.23
100-44102-3620	Natural gas	92.11
100-44201-3210	Phones/radios/pagers	60.02
100-44202-3610	Electricity	440.66
100-44202-3620	Natural gas	47.40
100-48101-4150	Reimbursable expense	171.27
230-43201-3135	Engineering	75.04
231-43601-3630	Waste management & r	2,689.28
232-43701-3610	Electricity	4,417.70
262-46101-5110	Capital assets	1,361.10
263-46101-4120	Convention bureau	2,385.08
410-41701-5110	Capital assets	840.00
420-42201-5110	Capital assets	54.59
430-43101-5110	Capital assets	225.99
431-43301-3110	Attorney	245.00
431-43301-3135	Engineering	29,629.48
431-43301-3810	Contractors	191,117.35
440-44103-5110	Capital assets	17,470.00
890-90001-3110	Attorney	105.00
890-90001-3135	Engineering	8,524.80
890-90001-3950	Legal notices/publicatio	52.40
	Grand Total:	338,742.39

Project Account Summary

Project Account Key	Payment Amount
None	104,440.07
200912-100	1,657.32
200922-100	121.06

Project Account Summary

Project Account Key	Payment Amount
200922-110	105.00
201302.089-100	1,007.68
201302.089-110	105.00
201805-100	2,964.12
201805-140	158,099.36
201902.93-100	1,350.84
201907-100	17,559.04
201907-140	33,017.99
202002.057-100	269.02
202102.053-100	2,233.45
202102.053-130	35.00
202103-100	1,376.58
202105-100	108.11
202111-100	1,361.10
231004009	2,393.59
231009001	295.69
Comp Plan-100	577.91
MISC-100	982.26
Trust-110	128.02
Trust-200	267.62
Trust-210	8,125.15
Trust-315	161.41
Grand Total:	338,742.39



City of Ham Lake, MN

Refund Check Register

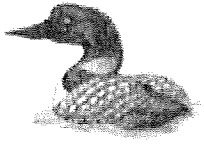
Packet: ARPKT00045 - 11/10/21 Escrow Refunds

Refund Detail

Account Number	Name	Check Date	Check Number	Amount
	** VOID **	11/10/2021	63493	0.00
00054	LANG BUILDERS	11/10/2021	63494	2,600.00
00059	LANG BUILDERS	11/10/2021	63495	5,100.00
00067	PAUL EMMERICH CONSTRUCTION	11/10/2021	63496	2,500.00
00069	JIM & ERICA DIRKES	11/10/2021	63497	5,100.00
00078	TH CONSTRUCTION	11/10/2021	63498	2,500.00
			Total Refund Amount:	17,800.00

Revenue Totals

Revenue Code	Total Distribution
TRUST DEPOSITS - TRUST DEPOSITS	17,800.00
Revenue Totals:	17,800.00



City of Ham Lake, MN

EFT Payroll Check Register Report Summary

Pay Period: 10/17/2021-10/30/2021

Packet: PYPKT01211 - PPE 10/30/21 PAID 11/5/21
Payroll Set: City of Ham Lake - 01

Type	Count	Amount
Regular Checks	0	0.00
Manual Checks	0	0.00
Reversals	0	0.00
Voided Checks	0	0.00
Direct Deposits	29	34,171.08
Total	29	34,171.08

Meeting Date: November 15, 2021



CITY OF HAM LAKE

STAFF REPORT

To: Mayor and Councilmembers

From: Denise Webster, City Administrator

Subject: Vacation of a portion of the 20-foot drainage and utility easement in Section 13

Introduction/Discussion:

Chad Johnson was approved for a Metes and Bounds Conveyance/Courtesy Combination in Section 13 at the November 1, 2021 City Council meeting. As part of that approval, a Public Hearing needs to be scheduled to vacate a portion of the 20-foot drainage and utility easement that was dedicated in 2020. Engineer Collins has reviewed the legal description and has no issue with the vacation as there is no public need for the easement.

Recommendation: I recommend approval of scheduling a Public Hearing for December 6, 2021 to vacate a portion of the 20-foot drainage and utility easement in Section 13.

RESOLUTION NO. 21-XX

WHEREAS, the Ham Lake City Council, on its own motion, wishes to consider the vacation of the following described land in the City of Ham Lake, pursuant to Minnesota Statutes Chapter 412.851:

EASEMENT TO BE VACATED:

A 20 foot wide drainage and utility easement under, over, and across the Northwest Quarter of the Southeast Quarter and the Northeast Quarter of the Southeast Quarter of Section 13, Township 32, Range 23, Anoka County, Minnesota.

The centerline of said easement is described as follows:

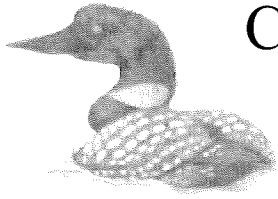
Commencing at the southwest corner of said Northwest Quarter of the Southeast Quarter of Section 13; thence northerly along the west line of said Northwest Quarter of the Southeast Quarter on an assumed bearing of North 00 degrees 03 minutes 45 seconds East, a distance of 200.00 feet; thence South 88 degrees 38 minutes 41 seconds East, a distance of 50.01 feet to the easterly right of way line of Lexington Avenue and the point of beginning of the centerline to be described; thence South 82 degrees 32 minutes 12 seconds East, a distance of 1258.84 feet to the east line of said Northwest Quarter of the Southeast Quarter; thence North 00 degrees 01 minute 27 seconds West, along said east line of the Northwest Quarter of the Southeast Quarter, a distance of 661.29 feet and said centerline there terminating.

NOW, THEREFORE, BE IT RESOLVED by the City Council of the City of Ham Lake, that the City Clerk is directed to post in a conspicuous place in the City Hall between the dates of November 16, 2021 and December 6, 2021, and to cause publication of a NOTICE OF PUBLIC HEARING, a copy of which is attached to this Resolution, for a public hearing to be held on December 6, 2021, with publication to occur in the Star Tribune on November 18, 2021.

Adopted by the City Council of the City of Ham Lake this 15th day of November, 2021.

Gary Kirkeide, Acting Mayor

Denise Webster, City Clerk



CITY OF HAM LAKE

15544 Central Avenue NE
Ham Lake, Minnesota 55304
(763) 434-9555
Fax: (763) 434-9599

NOTICE OF PUBLIC HEARING VACATION OF PUBLIC LAND

NOTICE IS HEREBY GIVEN, that a Public Hearing will be held before the Ham Lake City Council December 6, 2021 at 6:02 p.m. in the City Council Chambers, City Hall, 15544 Central Avenue NE, Ham Lake, Minnesota 55304, to hear comments and questions concerning the proposed vacation of the following described land within the City of Ham Lake, Minnesota:

EASEMENT TO BE VACATED:

A 20 foot wide drainage and utility easement under, over, and across the Northwest Quarter of the Southeast Quarter and the Northeast Quarter of the Southeast Quarter of Section 13, Township 32, Range 23, Anoka County, Minnesota.

The centerline of said easement is described as follows:

Commencing at the southwest corner of said Northwest Quarter of the Southeast Quarter of Section 13; thence northerly along the west line of said Northwest Quarter of the Southeast Quarter on an assumed bearing of North 00 degrees 03 minutes 45 seconds East, a distance of 200.00 feet; thence South 88 degrees 38 minutes 41 seconds East, a distance of 50.01 feet to the easterly right of way line of Lexington Avenue and the point of beginning of the centerline to be described; thence South 82 degrees 32 minutes 12 seconds East, a distance of 1258.84 feet to the east line of said Northwest Quarter of the Southeast Quarter; thence North 00 degrees 01 minute 27 seconds West, along said east line of the Northwest Quarter of the Southeast Quarter, a distance of 661.29 feet and said centerline there terminating.

Said hearing is conducted pursuant to Minnesota Statutes Chapter 412.851.

Dated: November 18, 2021

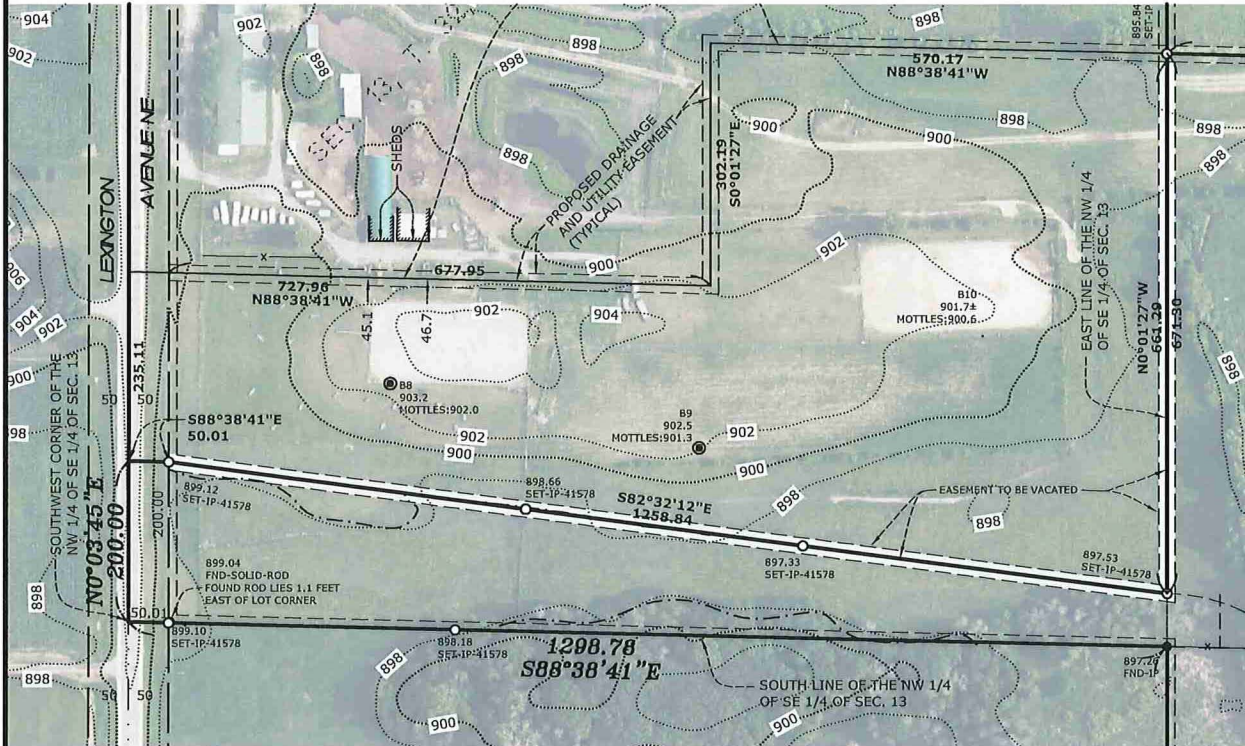
Dawnette Shimek, Deputy City Clerk

Posted at City Hall between the dates of November 16, 2021 and December 6, 2021

Published in the Star Tribune on November 18, 2021.

EASEMENT SKETCH AND DESCRIPTION

~Applicant~ CHAD JOHNSON



EASEMENT TO BE VACATED:

A 20 foot wide drainage and utility easement under, over, and across the Northwest Quarter of the Southeast Quarter and the Northeast Quarter of the Southeast Quarter of Section 13, Township 32, Range 23, Anoka County, Minnesota.

The centerline of said easement is described as follows:

Commencing at the southwest corner of said Northwest Quarter of the Southeast Quarter of Section 13; thence northerly along the west line of said Northwest Quarter of the Southeast Quarter on an assumed bearing of North 00 degrees 03 minutes 45 seconds East, a distance of 200.00 feet; thence South 88 degrees 38 minutes 41 seconds East, a distance of 50.01 feet to the easterly right of way line of Lexington Avenue and the point of beginning of the centerline to be described; thence South 82 degrees 32 minutes 12 seconds East, a distance of 1258.84 feet to the east line of said Northwest Quarter of the Southeast Quarter; thence North 00 degrees 01 minute 27 seconds West, along said east line of the Northwest Quarter of the Southeast Quarter, a distance of 661.29 feet and said centerline there terminating.

LEGEND

- DENOTES IRON MONUMENT FOUND AS LABELED
- DENOTES IRON MONUMENT SET, MARKED RLS# 41578
- ⎓ DENOTES EASEMENT TO BE VACATED - (AREA = 38,401 S.F.)



GRAPHIC SCALE



1 INCH = 150 FEET

I hereby certify that this plan, survey or report was prepared by me or under my direct supervision and that I am a duly Licensed Land Surveyor under the laws of the State of Minnesota.

By: 
Minnesota License No. 41578

Dated 10th day of November 2020.

DATUM: Anoka		JOB NO. 201046PP	
REVISIONS			
1			
2			
3			
NO.	DATE	DESCRIPTION	BY

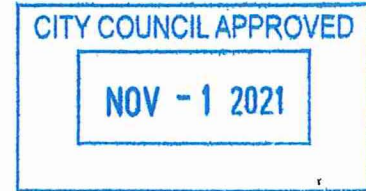
SCALE: 1" = 150'
DATE: 11-10-21
DRAWN BY: BCD
CREW: BH/TL



E. G. RUD & SONS, INC.
Professional Land Surveyors
6776 Lake Drive NE, Suite 110
Lino Lakes, MN 55014
Tel. (651) 361-8200 Fax (651) 361-8701
www.egrud.com

Memorandum

Date: October 28, 2021
To: Planning Commission
From: Tom Collins, City Engineer *TPC*
Subject: Proposed lot line adjustment – Southeast quarter of Section 13



Introduction:

The 35.61-acre 13-32-23-42-0002/16033 Lexington Avenue is proposed to be reduced by 12.88-acres, with the 12.88-acres being combined with the 13-32-23-44-0002 parcel (attached) that was approved at the October 5, 2020 City Council meeting. The proposed lot line adjustment will reduce the existing 13-32-23-42-0001/16033 Lexington Avenue to 22.73 acres.

Discussion:

The resulting 22.73-acre parcel meets the minimum frontage requirement of 200 feet on Lexington Avenue. Soil borings have confirmed that there is adequate room for a secondary septic system on the resulting 22.73-acre parcel. The required 10-foot drainage and utility easements are shown around on both sides of the northerly line of the 12.88-acre parcel being conveyed. A future public hearing will need to be scheduled for consideration of vacating a portion of the 10-foot drainage and utility easement that was dedicated in 2020, per the attached.

Recommendation:

It is recommended that the lot line adjustment be approved, subject to dedicating a 10-foot wide drainage and utility easement on both sides of the northerly line of the 12.88-acre parcel being conveyed.

LOT LINE ADJUSTMENT

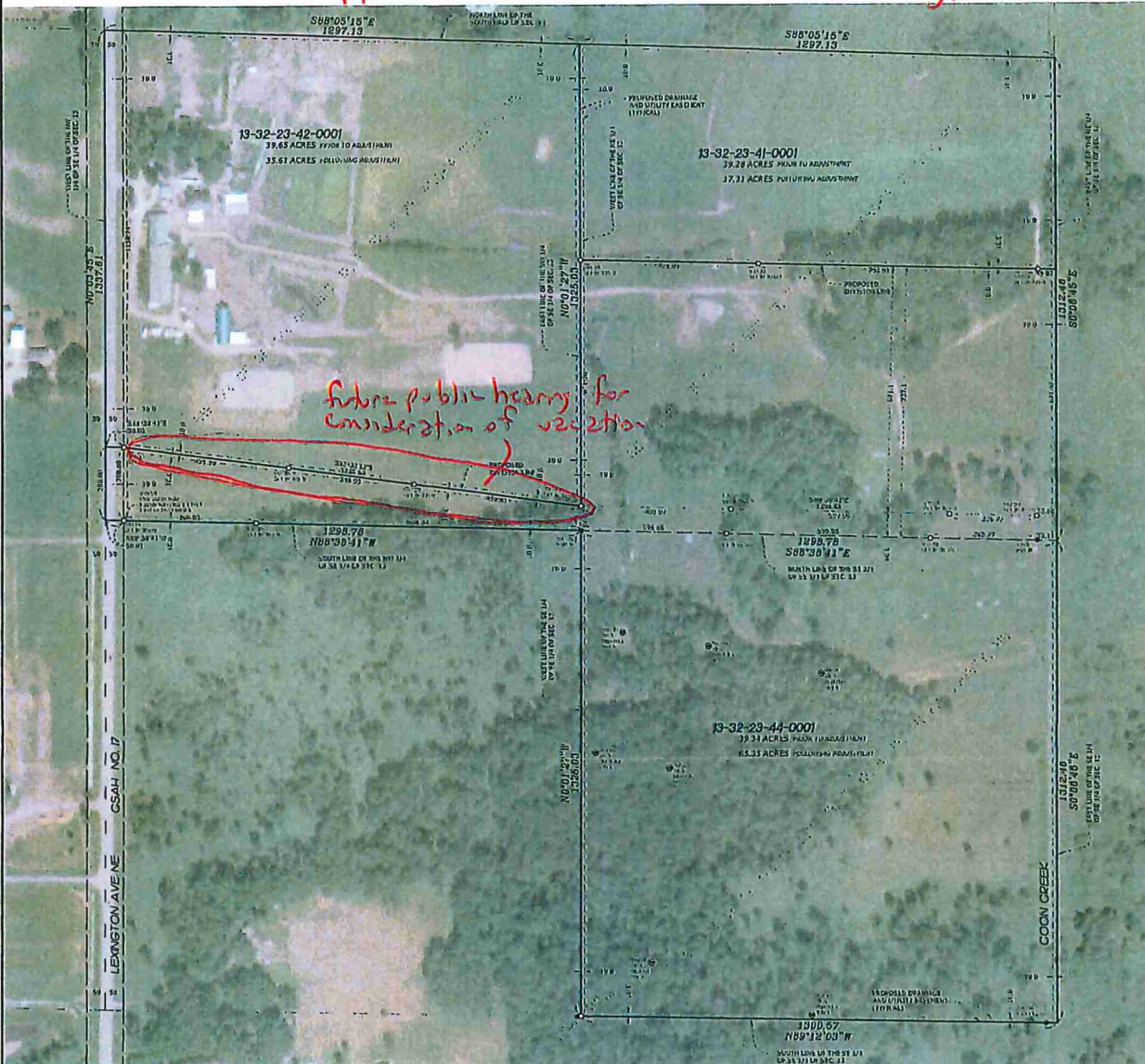
~Applicant~ CHAD JOHNSON

~Parcel Owners~ KSSK INVESTMENTS, LLC
DEAN AND PAT PETERSON

Approved at 10/5/20 Council meeting.

NOTES

- Field survey was completed by E.G. Rud and Sons, Inc. on 09/14/20.
- Bearings shown are on Anoka County datum.
- This survey was prepared without the benefit of title work. Additional easements, restrictions and/or encumbrances may exist other than those shown hereon. Survey subject to revision upon receipt of a current title commitment or an attorney's title opinion.



PROPOSED DRAINAGE AND UTILITY EASEMENTS

A drainage and utility easement over, under, and across the north 10 feet; the south 10 feet; and the east 10 feet of the west 60 feet of the following described parcel:

That part of the Northwest Quarter of the Southeast Quarter of Section 13, Township 32, Range 23, Anoka County, Minnesota, which lies southerly of the following described line:

Commencing at the southwest corner of said Northwest Quarter of the Southeast Quarter of Section 13; thence northerly along the west line of said Northwest Quarter of the Southeast Quarter on an assumed bearing of North 00 degrees 03 minutes 45 seconds East, a distance of 200.00 feet to the point of beginning of the line to be described; thence South 88 degrees 38 minutes 41 seconds East, a distance of 50.01 feet to the easterly right of way line of Lexington Avenue; thence South 82 degrees 32 minutes 12 seconds East, a distance of 1258.84 feet to the east line of said Northwest Quarter of the Southeast Quarter and said line there terminating.

A drainage and utility easement over, under, and across the north 10 feet; the south 10 feet; the east 10 feet; and the east 10 feet of the west 60 feet of the following described parcel:

That part of the Northwest Quarter of the Southeast Quarter of Section 13, Township 32, Range 23, Anoka County, Minnesota, which lies southerly of the following described line:

Commencing at the southwest corner of said Northwest Quarter of the Southeast Quarter of Section 13; thence northerly along the west line of said Northwest Quarter of the Southeast Quarter on an assumed bearing of North 00 degrees 03 minutes 45 seconds East, a distance of 200.00 feet to the point of beginning of the line to be described; thence South 88 degrees 38 minutes 41 seconds East, a distance of 50.01 feet to the easterly right of way line of Lexington Avenue; thence South 82 degrees 32 minutes 12 seconds East, a distance of 1258.84 feet to the east line of said Northwest Quarter of the Southeast Quarter and said line there terminating.

A drainage and utility easement over, under, and across the south 10 feet; the east 10 feet; the north 10 feet; and the west 10 feet of the following described parcel:

The Southeast Quarter of the Southeast Quarter of Section 13, Township 32, Range 23, Anoka County, Minnesota. Together with the South 737.10 feet of the Northeast Quarter of the Southeast Quarter of said Section 13.

A drainage and utility easement over, under, and across the south 10 feet; the east 10 feet; the north 10 feet; and the west 10 feet of the following described parcel:

That part of the Northeast Quarter of the Southeast Quarter of Section 13, Township 32, Range 23, Anoka County, Minnesota, lying north of the South 737.10 feet of said Northeast Quarter of the Southeast Quarter.

PARCELS TO BE CONVEYED:

PORTION OF P.I.D. NUMBER 13-32-23-42-0001

That part of the Northwest Quarter of the Southeast Quarter of Section 13, Township 32, Range 23, Anoka County, Minnesota, which lies southerly of the following described line:

Commencing at the southwest corner of said Northwest Quarter of the Southeast Quarter of Section 13; thence northerly along the west line of said Northwest Quarter of the Southeast Quarter on an assumed bearing of North 00 degrees 03 minutes 45 seconds East, a distance of 200.00 feet to the point of beginning of the line to be described; thence South 88 degrees 38 minutes 41 seconds East, a distance of 50.01 feet to the easterly right of way line of Lexington Avenue; thence South 82 degrees 32 minutes 12 seconds East, a distance of 1258.84 feet to the east line of said Northwest Quarter of the Southeast Quarter and said line there terminating.

PORTION OF P.I.D. NUMBER 13-32-23-41-0001

The south 66 feet of the Northeast Quarter of the Southeast Quarter of Section 13, Township 32, Range 23, Anoka County, Minnesota.

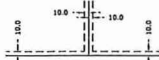
AID

The north 673.10 feet of the south 737.10 feet of the Northeast Quarter of the Southeast Quarter of Section 13, Township 32, Range 23, Anoka County, Minnesota.

LEGEND

- DENOTES IRON MONUMENT FOUND AS LABELED
- DENOTES IRON MONUMENT SET, MARKED RLS# 41578
- DENOTES SOIL BORING, (BY OTHERS)
- DENOTES LIDAR CONTOURS

DRAINAGE AND UTILITY EASEMENTS ARE SHOWN THUS:



BEING 10 FEET IN WIDTH AND ADJOINING SIDE LOT LINES AND 10 FEET IN WIDTH AND ADJOINING STREET LINES AND REAR LOT LINES, UNLESS OTHERWISE SHOWN ON THIS SURVEY.

EXISTING LEGAL DESCRIPTIONS:

P.I.D. NUMBER 13-32-23-42-0001: 16033 LEXINGTON AVENUE

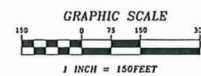
The Northwest Quarter of the Southeast Quarter of Section 13, Township 32, Range 23, Anoka County, Minnesota

P.I.D. NUMBER 13-32-23-41-0001: UNASSIGNED ADDRESS

The Northeast Quarter of the Southeast Quarter of Section 13, Township 32, Range 23, Anoka County, Minnesota

P.I.D. NUMBER 13-32-23-44-0001: UNASSIGNED ADDRESS

The Southeast Quarter of the Southeast Quarter of Section 13, Township 32, Range 23, Anoka County, Minnesota



I hereby certify that this survey, plan or report was prepared by me or under my direct supervision and that I am a duly Registered Land Surveyor under the laws of the State of Minnesota.

MASON E. RUD
Date: 10/13/2020 License No. 41578

NO.	DATE	DESCRIPTION	BY
1	9/14/20	ACROSS FIELD DATA	CRJ
2	10/13/20	ADD PROPOSED EASEMENTS	CRJ
3			

E. G. RUD & SONS, INC.
Professional Land Surveyors
6776 Lake Drive NE, Suite 110
Lino Lakes, MN 55014
Tel. (651) 361-8200 Fax (651) 361-8701

NORTH