

CITY OF HAM LAKE

15544 Central Avenue NE
Ham Lake, Minnesota 55304
(763) 434-9555
Fax: (763) 434-9599

CITY OF HAM LAKE CITY COUNCIL AND ECONOMIC DEVELOPMENT AUTHORITY AGENDA MONDAY, FEBRUARY 3, 2025

- 1.0 CALL TO ORDER - 6:00 P.M. – Pledge of Allegiance**
- 2.0 PUBLIC COMMENT**
- 3.0 SPECIAL APPEARANCES/PUBLIC HEARINGS – None**

4.0 CONSENT AGENDA

These items are considered to be routine and will be enacted in one motion. There will be no separate discussion of these items unless a Councilmember or citizen so requests, in which event the item will be removed from the Consent Agenda and considered in normal sequence. (All items listed on the Consent Agenda are recommended for approval.)

- 4.1 Approval of minutes of January 21, 2025
- 4.2 Approval of claims
- 4.3 Approval of an Ordinance for the Five-Year Extension to the current Comcast Cable Franchise Agreement
- 4.4 Approval of not waiving the monetary limits on municipal tort liability coverage
- 4.5 Approval of the re-appointment of Brian Pogalz and Dave Ringler as Planning Commissioners with the term of March 15, 2025 to March 15, 2028
- 4.6 Approval of purchasing a Front-End Loader for the Public Works Department
- 4.7 Approval of Snow Plow Truck change order for the Public Works Department
- 4.8 Approval of a Lot Line Adjustment between 445 157th Avenue NE and 505 157th Avenue NE in Section 18
- 4.9 Road Committee Recommendation:
 - 1) Approval of directing Engineer Krugler to prepare the feasibility study for the Municipal State Aid (MSA) 143rd Avenue NE from Highway 65 NE to Lincoln Street NE

5.0 PLANNING COMMISSION RECOMMENDATIONS – None

6.0 ECONOMIC DEVELOPMENT AUTHORITY – None

7.0 APPEARANCES

- 7.1 Finance Director Andrea Murff, 4th Quarter Financial Report

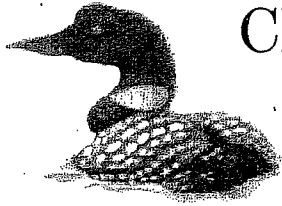
8.0 CITY ATTORNEY

9.0 CITY ENGINEER

10.0 CITY ADMINISTRATOR

11.0 COUNCIL BUSINESS

- 11.1 Committee Reports
- 11.2 Discussion and consideration of the First Reading of the Wetland Bank Ordinance (tabled at the December 2, 2024 City Council meeting)
- 11.3 Announcements and future agenda items



CITY OF HAM LAKE

15544 Central Avenue NE
Ham Lake, Minnesota 55304
(763) 434-9555
Fax: (763) 434-9599

CITY OF HAM LAKE CITY COUNCIL AND ECONOMIC DEVELOPMENT AUTHORITY MINUTES TUESDAY, JANUARY 21, 2025

The Ham Lake City Council and Economic Development Authority met for its regular meeting on Tuesday, January 21, 2025 at 6:00 p.m. in the Council Chambers at the Ham Lake City Hall located at 15544 Central Avenue NE in Ham Lake, Minnesota.

MEMBERS PRESENT: Mayor Brian Kirkham and Councilmembers Jim Doyle, Andrew Hallberg, and Al Parranto

MEMBERS ABSENT: Councilmember Mike Van Kirk

OTHERS PRESENT: City Attorney, Mark Berglund; City Engineer, Dave Krugler; City Administrator, Denise Webster; and Finance Director, Andrea Murff

1.0 CALL TO ORDER - 6:00 P.M. – Pledge of Allegiance

2.0 PUBLIC COMMENT

Mayor Kirkham introduce a Scout named Andrew that was in the audience. Mayor Kirkham stated that Andrew would like to ask some questions of the Council after the meeting.

Derek Lind, representing the Anoka County Election Integrity Team (ACEIT) was present before the City Council. Mr. Lind stated that he would like to see cities discontinue the use of electronic poll pads and go back to using paper rosters. Mr. Lind stated that not everyone in the state is using electronic poll pads.

3.0 SPECIAL APPEARANCES/PUBLIC HEARINGS

3.1 Lt. Derek Peters, Anoka County Sheriff's Office Monthly Report

Lt. Peters gave a summary of the Sheriff's Report for the month of December 2024.

3.2 Representatives of the Fire Rescue Foundation of Ham Lake (FRFHL) – Introduction

Not Present

4.0 CONSENT AGENDA

These items are considered to be routine and will be enacted in one motion. There will be no separate discussion of these items unless a Councilmember or citizen so requests, in which event the item will be removed from the Consent Agenda and considered in normal sequence. (All items listed on the Consent Agenda are recommended for approval.)

4.1 Approval of minutes of January 6, 2025

4.2 Approval of claims in the amount of \$617,296.87

4.3 Approval of changes to the Ham Lake Fire Relief Association Bylaws, Appendix C for a pension increase from \$6,200 to \$6,400 per year of service, effective January 22, 2025

4.4 Approval of interfund transfers

- 4.5 ~~Approval of purchasing a Front-End Loader for the Public Works Department - Removed~~
- 4.6 ~~Approval of Snow Plow Truck change order for the Public Works Department - Removed~~
- 4.7 Approval of scheduling the Recycling Days for Saturday, May 3rd and Saturday, September 6, 2025
- 4.8 Approval of the Arbor Day Proclamation for May 3, 2025
- 4.9 Approval of Resolution No. 25-04 to appoint signers and authorized traders for bank and investment accounts
- 4.10 Approval of Resolution No. 25-05 accepting the low bid for the 2025 Overlay Project
- 4.11 Approval of Resolution No. 25-06 requiring "No Parking" on the Highway 65 East Frontage Road from 171st Avenue NE to Anoka County State Aid Highway 18 (Crosstown Boulevard NE)
- 4.12 Approval of a Resolution supporting the modernizing PEG Funding
- 4.13 Approval of the First Reading of an Ordinance for the Five-Year Extension to the current Comcast Cable Franchise Agreement

Mayor Kirkham stated that he would like to pull Item 4.12 for discussion.

Motion by Kirkham, seconded by Hallberg, to approve the Consent Agenda removing Item 4.12. All present in favor, motion carried.

Mayor Kirkham stated that the modernizing PEG fee would increase fees for Comcast users. **Motion by Kirkham, seconded by Doyle, to not approve Item 4.12, a Resolution supporting the modernizing PEG Funding. All present, in favor, motion carried.**

- 5.0 **PLANNING COMMISSION RECOMMENDATIONS** – None
- 6.0 **ECONOMIC DEVELOPMENT AUTHORITY** – None
- 7.0 **APPEARANCES** – None
- 8.0 **CITY ATTORNEY** – None
- 9.0 **CITY ENGINEER** – None
- 10.0 **CITY ADMINISTRATOR** – None

11.0 **COUNCIL BUSINESS**

11.1 Committee Reports

Mayor Kirkham stated there was a Road Committee meeting last week and that the overlay bids came in lower than the engineers estimate.

Councilmember Parranto stated that he attended a Fire Department meeting prior to the Council meeting and the new fire truck that is on order and fire inspections were discussed.

11.2 Announcements and future agenda items

Mayor Kirkham stated that Wetland Bank ordinance will be added to the next City Council agenda for discussion.

Councilmember Parranto stated that he would like Attorney Berglund's opinion if the city is legally required to use electronic poll pads for elections. Councilmember Parranto stated that he doesn't think there are any problems with the elections in Ham Lake. Councilmember Parranto asked Administrator Webster what her thoughts were regarding the use of electronic poll pads. Administrator Webster stated that the electronic poll pads have been used for several years and are more efficient, confidential and

accurate because they are electronically updated frequently. Administrator Webster added a paper roster shows a list of voter names on each page, a voter then signs their name on the paper roster alongside of their name and then are able to see the names of other voters who have or have not voted. Administrator Webster stated that with the electronic poll pads, only one voter name is shown on the electronic poll pad and the voter then signs their name electronically. Administrator Webster stated that during the post-election review, four precincts throughout Anoka County are randomly chosen for a hand-count of ballots; in the 2024 General Election the County randomly chose eight precincts for a hand-count of ballots and there were no issues found during the recounts.

Motion by Parranto, seconded by Doyle, to adjourn the meeting at 6:21 p.m. All present in favor, motion carried.

Andrea Murff, Finance Director

CITY OF HAM LAKE
CLAIMS SUBMITTED TO COUNCIL
February 3, 2025

CITY OF HAM LAKE

EFTS, CHECKS, AND BANK DRAFTS		01/22/25 - 02/03/25	
EFT	# 2225 - 2230	\$	3,762.57
REFUND CHECKS	# 66869	\$	150.00
CHECKS	# 66870 - 66901	\$	40,781.45
BANK DRAFTS	DFT0002835 - DFT0002842	\$	34,027.89
TOTAL EFTS, CHECKS, AND BANK DRAFTS		\$	78,721.91
PAYROLL CHECKS			
01/24/25	Direct Deposits	\$	54,505.18
TOTAL PAYROLL CHECKS		\$	54,505.18
VOID CHECKS			
CHECKS	# 66899		
ZERO CHECKS		\$	-
ZERO EFT		\$	-
BANK DRAFTS		\$	-
TOTAL VOIDS		\$	-
TOTAL OF ALL PAYMENTS		\$	133,227.09

APPROVED BY THE HAM LAKE CITY COUNCIL THIS 3RD DAY OF FEBRUARY 2025

MAYOR

COUNCILMEMBER

COUNCILMEMBER

COUNCILMEMBER

COUNCILMEMBER



City of Ham Lake, MN

Refund Check Register

Packet: ARPKT01306 - 01/28/25 TRUST REFUND

Refund Detail

Account Number	Name	Check Date	Check Number	Amount
00625	NICK SCIORROTTA	1/28/2025	66869	150.00
Total Refund Amount:				150.00

Revenue Totals

Revenue Code	Total Distribution
TRUST DEPOSITS - TRUST DEPOSITS	150.00
Revenue Totals:	150.00

General Ledger Distribution

Posting Date: 01/28/2025

Account Number	Account Name	Posting Amount	IFT
Fund: 890 - TRUST FUND			
890-10101	Cash-claim on pooled cash	-150.00	Yes
890-11501	Misc receivables	150.00	
	890 Total:	0.00	
Fund: 999 - POOLED CASH			
999-10100	Pooled Cash	-150.00	
999-20702	Due to other funds	150.00	Yes
	999 Total:	0.00	
	Distribution Total:	0.00	



Payment Dates 1/22/2025 - 2/3/2025

Payment Number	Vendor Name	Description (Item)	Account Name	Account Number	Amount
2225	BLAINE BROTHERS INC	#78 STEER AXLE ALIGNMENT	Vehicle repair & maintenance	100-43101-3470	379.97
2226	CMT JANITORIAL SERVICES	CITY HALL CLEANING	Cleaning service	100-41702-3430	612.00
2226	CMT JANITORIAL SERVICES	SHERIFF'S OFFICE CLEANING	Cleaning service	100-41702-3430	153.00
2226	CMT JANITORIAL SERVICES	FIRE #3	Cleaning service	100-42202-3430	387.00
2226	CMT JANITORIAL SERVICES	FIRE #1 CLEANING	Cleaning service	100-42202-3430	161.00
2226	CMT JANITORIAL SERVICES	FIRE #2 CLEANING	Cleaning service	100-42202-3430	151.00
2226	CMT JANITORIAL SERVICES	PW CLEANING	Cleaning service	100-43104-3430	148.00
2226	CMT JANITORIAL SERVICES	SR CENTER CLEANING	Cleaning service	100-44202-3430	300.00
2227	DELTA DENTAL PLAN OF MINN	FEB COBRA - DK	COBRA receivable	100-11502	52.06
2227	DELTA DENTAL PLAN OF MINN	JAN - EH	Dental Insurance	100-21711	-35.73
2227	DELTA DENTAL PLAN OF MINN	FEB DENTAL	Dental Insurance	100-21711	906.47
2228	MEDTOX LABORATORIES	DRUG TESTING	Personnel testing & recruitme	100-41101-3150	32.46
2229	UNLIMITED SUPPLIES INC	MISC SUPPLIES	Operating supplies	100-43101-2290	43.80
2230	VESTIS	PW UNIFORMS	Clothing & personal protectiv	100-43101-2210	94.26
2230	VESTIS	FIRST AID CABINET	Safety supplies	100-43101-2240	14.99
2230	VESTIS	PARK UNIFORMS	Clothing & personal protectiv	100-44101-2210	47.93
2230	VESTIS	PW UNIFORMS	Clothing & personal protectiv	100-43101-2210	94.26
2230	VESTIS	FIRST AID CABINET	Safety supplies	100-43101-2240	14.99
2230	VESTIS	PARK UNIFORMS	Clothing & personal protectiv	100-44101-2210	47.93
2230	VESTIS	PW UNIFORMS	Clothing & personal protectiv	100-43101-2210	94.26
2230	VESTIS	FIRST AID CABINET	Safety supplies	100-43101-2240	14.99
2230	VESTIS	PARK UNIFORMS	Clothing & personal protectiv	100-44101-2210	47.93
66870	ANIMAL HUMANE SOCIETY	4TH QTR ANIMAL CONTROL	Other professional services	100-42501-3190	303.00
66870	ANIMAL HUMANE SOCIETY	DANGEROUS DOG HOLD - CO	Reimbursable expense	100-48101-4150	1,660.00
66871	ANOKA COUNTY FIRE PROTEC	PSDS Cost Allocation	Other communication	100-42201-3290	9,052.00
66872	ANOKA COUNTY TREASURY D	JAN BROADBAND CITY HALL C	Internet & website	100-41707-3220	37.50
66872	ANOKA COUNTY TREASURY D	JAN BROADBAND FIRE #2	Internet	100-42201-3220	75.00
66873	BLAINE LOCK & SAFE, INC.	HOCKEY RINK/WARMING HO	Building repair & maintenanc	100-44102-3420	162.50
66874	BOYER FORD TRUCK INC	#78 DAMPER ASY	Vehicle parts & supplies	100-43101-2340	97.82
66874	BOYER FORD TRUCK INC	E-2 - Brakes	Vehicle parts & supplies	100-42201-2340	2,337.88
66874	BOYER FORD TRUCK INC	#89 - Belts	Vehicle parts & supplies	100-43101-2340	70.45
66874	BOYER FORD TRUCK INC	#89 SENSOR	Vehicle parts & supplies	100-43101-2340	158.44
66875	CASPER'S EXCAVATING, INC.	HL PAVILION FROZEN SEPTIC P	Building repair & maintenanc	100-44102-3420	475.00
66876	CITY OF ST PAUL	14 TN ASPHALT MIX	Due to Other Government	100-21800	1,102.64
66877	COMCAST BUSINESS	FIRE #1 ADD'L CABLE BOX	Rentals-other	100-42201-3390	11.32
66878	DEARBORN LIFE INS CO	FEBVOL LIFE	Life Insurance	100-21714	204.00
66878	DEARBORN LIFE INS CO	MS LIFE	Life Insurance	100-21714	-6.40
66878	DEARBORN LIFE INS CO	FEB LIFE	Life Insurance	100-21714	54.40
66879	DEHN OIL CO	Diesel -219 Gal	Fuel	100-43101-2230	578.60
66880	FIRST ADVANTAGE LNS OCC H	ANNUAL ENROLLMENT - CP	Personnel testing & recruitme	100-43101-3150	36.71
66881	HAM LAKE HARDWARE INC	Mail Box	Operating supplies	100-43101-2290	42.14
66882	HAM LAKE HAULERS INC	4TH QTR RECYCLING	Waste management & recycli	231-43601-3630	8,127.50
66883	HEALTH PARTNERS INC	JAN EAP	Other professional services	100-41701-3190	22.10
66884	INTERSTATE ALL BATTERY CEN	Warming House - Exit Light	Building repair & maintenanc	100-44102-2310	16.20
66885	KINGS III EMERGENCY COMM	FEB ELEVATOR PHONE	Phones/radios/pagers	100-41701-3210	39.17
66886	MENARDS-BLAINE	Garbage Bags, rakes, & post	Operating supplies	100-43101-2290	214.86
66886	MENARDS-BLAINE	Salt	Building repair & maintenanc	100-41702-2310	167.79
66886	MENARDS-BLAINE	Salt	Building repair & maintenanc	100-42202-2310	167.79
66886	MENARDS-BLAINE	Salt	Building repair & maintenanc	100-43104-2310	167.79
66887	MINNEAPOLIS OXYGEN COMP	Welding Wire	Operating supplies	100-43101-2290	120.94
66888	MINNESOTA PYROTECHNICS L	1st Half of Freedom Fest Fire	Community celebrations	100-41701-4115	6,000.00
66889	NEWMAN TRAFFIC SIGNS INC	SIGN POSTS	Street signs	100-43401-2250	924.97
66890	NICHOLAS SCIORROTTA	01/22/25 HAM LAKE PARK RE	Sales tax	100-21801	4.06
66890	NICHOLAS SCIORROTTA	01/22/25 HAM LAKE PARK RE	Park/pavilion rentals	100-34702	50.00

Council Approval List

Payment Dates: 1/22/2025 - 2/3/2025

Payment Number	Vendor Name	Description (Item)	Account Name	Account Number	Amount
66891	NORTHWEST FAMILY PHYSICI	BT DRUG TESTING	Personnel testing & recruitme	100-42201-3150	27.00
66892	PERMITWORKS LLC	PERMITWORKS CONTRACTOR	Computer & software support	100-42401-3120	595.00
66892	PERMITWORKS LLC	PERMITWORKS PERMIT/INSPE	Computer & software support	100-42401-3120	1,495.00
66892	PERMITWORKS LLC	PERMITWORKS CODE ENFORC	Computer & software support	100-42401-3120	1,495.00
66893	SIEGFRIED FAMILY TOOLS INC	BACK PROBE KIT	Small tools	100-43101-2410	31.95
66894	SPECIALTY SOLUTIONS LLC	ECO THAW	Operating supplies	100-43102-2290	224.28
66895	TASC	MAR COBRA ADMINISTRATIO	Other professional services	100-41701-3190	28.30
66896	THE MPX GROUP	FEB HAM LAKER DELIVERY	Other services and charges	211-41704-3990	400.00
66897	TJB HOMES INC	DRAINAGE #2025-00066 L4B2	Future drainage fees	230-34401	200.00
66898	US BANK CORPORATE PAYME	Menards - Fire #3 Shovels-MR	Small tools	100-42201-2410	68.96
66898	US BANK CORPORATE PAYME	Amazon - Screen Protectors-N	Capital assets	100-42201-5110	15.88
66898	US BANK CORPORATE PAYME	AUTOZONE-FREEZE OFF PENE	Operating supplies	100-43101-2290	21.39
66898	US BANK CORPORATE PAYME	MENARDS-NEED RECEIPT-JC	A/P adjustment	100-20202	145.00
66898	US BANK CORPORATE PAYME	HL CHAMBER-HL CHAMBER D	Dues & subscriptions	100-41101-3920	540.00
66898	US BANK CORPORATE PAYME	ZOOM-Zoom - January-DW	Dues & subscriptions	100-41201-3920	13.83
66898	US BANK CORPORATE PAYME	LEAGUE OF MN CITIES-PESHR	Dues & subscriptions	100-41401-3920	75.00
66898	US BANK CORPORATE PAYME	MNGFOA-MNGFOA DUES - A	Dues & subscriptions	100-41401-3920	70.00
66898	US BANK CORPORATE PAYME	AMAZON-mech pencils-NW	Office supplies	100-41701-2110	6.93
66898	US BANK CORPORATE PAYME	AMAZON-calculator-NW	Office supplies	100-41701-2110	9.59
66898	US BANK CORPORATE PAYME	AMAZON-file folders-NW	Operating supplies	100-41701-2290	25.46
66898	US BANK CORPORATE PAYME	AMAZON-phone cords-NW	Operating supplies	100-41701-2290	17.67
66898	US BANK CORPORATE PAYME	AMAZON-document frames-N	Operating supplies	100-41701-2290	57.28
66898	US BANK CORPORATE PAYME	AMAZON-document frames-N	Operating supplies	100-41701-2290	-27.99
66898	US BANK CORPORATE PAYME	PANTHEON-website-NW	Internet & website	100-41707-3220	350.00
66898	US BANK CORPORATE PAYME	ICONTACT-iContact-NW	Internet & website	100-41707-3220	418.20
66898	US BANK CORPORATE PAYME	AMAZON-ethernet switch-N	Operating supplies	100-42201-2290	27.90
66898	US BANK CORPORATE PAYME	AMAZON-wireless mouse-NW	Office supplies	100-42401-2110	19.99
66898	US BANK CORPORATE PAYME	AMAZON-notary stamp Maria	Operating supplies	100-42401-2290	20.54
66898	US BANK CORPORATE PAYME	SEC OF STATE-notary registrati	Dues & subscriptions	100-42401-3920	120.00
66898	US BANK CORPORATE PAYME	AMAZON-timber carrier-NW	Safety supplies	100-43101-2240	71.24
66898	US BANK CORPORATE PAYME	AMAZON-first aid kits-NW	Safety supplies	100-43101-2240	95.98
66898	US BANK CORPORATE PAYME	AMAZON-#97 tank cover-NW	Equipment parts & supplies	100-43101-2320	55.85
66898	US BANK CORPORATE PAYME	AMAZON-#93 valve-NW	Vehicle parts & supplies	100-43101-2340	177.48
66898	US BANK CORPORATE PAYME	SP DIESEL EQUIP-- #89 Pre-Cle	Equipment parts & supplies	100-44101-2320	101.28
66898	US BANK CORPORATE PAYME	AMAZON-trupower rinse addi	Operating supplies	100-44201-2290	297.00
66898	US BANK CORPORATE PAYME	AMAZON-ecolab detergent-N	Operating supplies	100-44201-2290	253.99
66900	VERIZON WIRELESS	MR	Phones/radios/pagers	100-42201-3210	41.39
66900	VERIZON WIRELESS	5 FIRE SURFACE PROS	Phones/radios/pagers	100-42201-3210	100.10
66900	VERIZON WIRELESS	TD, MI & 2 LAPTOPS	Phones/radios/pagers	100-42401-3210	162.80
66900	VERIZON WIRELESS	JK, JW, JC, CS, EH, & 2 LAPTOP	Phones/radios/pagers	100-43101-3210	306.11
66900	VERIZON WIRELESS	MS	Phones/radios/pagers	100-44101-3210	-34.24
66900	VERIZON WIRELESS	DH, AC	Phones/radios/pagers	100-44101-3210	87.24
66901	WRIGHT-HENNEPIN COOPERA	FFB SECURITY MONITORING	Monitoring	100-41702-3145	33.95
66901	WRIGHT-HENNEPIN COOPERA	FEB ELEVATOR MONITORING	Monitoring	100-41702-3145	10.00
66901	WRIGHT-HENNEPIN COOPERA	FEB PW FIRE PANEL MONITOR	Monitoring	100-43104-3145	52.95
DFT0002835	MN STATE DEPT OF REVENUE-	2024 SALES TAX DUE	Sales tax	100-21801	484.00
DFT0002836	COMPENSATION CONSULTAN	Health Savings Account	HSA Account	100-21712	150.00
DFT0002837	EMPOWER	Deferred Compensation	Deferred compensation	100-21704	2,485.00
DFT0002837	EMPOWER	Roth IRA	Deferred compensation	100-21704	50.00
DFT0002838	IRS-Payroll Tax	Federal Withholding	Federal WH/FICA/MC	100-21701	6,564.52
DFT0002838	IRS-Payroll Tax	Medicare Payable	Federal WH/FICA/MC	100-21701	2,236.74
DFT0002838	IRS-Payroll Tax	Social Security Payable	Federal WH/FICA/MC	100-21701	8,958.82
DFT0002839	MN STATE DEPT OF REVENUE-	MN State Withholding	State W/H	100-21702	2,862.54
DFT0002840	PERA	Retirement-Coordinated	PERA	100-21703	7,419.99
DFT0002840	PERA	Retirement-Elected Officials	PERA	100-21703	40.84
DFT0002840	PERA	Retirement-Police & Fire	PERA	100-21703	1,318.92
DFT0002841	US POSTMASTER	HAM LAKER POSTAGE	Postage	211-41704-2120	1,414.30
DFT0002842	US POSTMASTER	SR CENTER POSTAGE	Postage Liability	100-20204	42.22

Grand Total: 78,571.91

Report Summary

Fund Summary

Fund	Payment Amount
100 - GENERAL	68,430.11
211 - HAM LAKER	1,814.30
230 - FUTURE DRAINAGE	200.00
231 - RECYCLING	8,127.50
Grand Total:	78,571.91

Account Summary

Account Number	Account Name	Payment Amount
100-11502	COBRA receivable	52.06
100-20202	A/P adjustment	145.00
100-20204	Postage Liability	42.22
100-21701	Federal WH/FICA/MC	17,760.08
100-21702	State W/H	2,862.54
100-21703	TERA	8,779.75
100-21704	Deferred compensation	2,535.00
100-21711	Dental Insurance	870.74
100-21712	HSA Account	150.00
100-21714	Life Insurance	252.00
100-21800	Due to Other Governme	1,102.64
100-21801	Sales tax	488.06
100-34702	Back/pavilion rentals	50.00
100-41101-3150	Personnel testing & recr	32.46
100-41101-3920	Dues & subscriptions	540.00
100-41201-3920	Dues & subscriptions	13.83
100-41401-3920	Dues & subscriptions	145.00
100-41701-2110	Office supplies	16.52
100-41701-2290	Operating supplies	72.42
100-41701-3190	Other professional servi	50.40
100-41701-3210	Phones/radios/pagers	39.17
100-41701-4115	Community celebrations	6,000.00
100-41702-2310	Building repair & mainte	167.79
100-41702-3145	Monitoring	43.95
100-41702-3430	Cleaning service	765.00
100-41707-3220	Internet & website	805.70
100-42201-2290	Operating supplies	27.90
100-42201-2340	Maintenance parts & supplies	2,337.88
100-42201-2410	Handil tools	68.96
100-42201-3150	Personnel testing & recr	27.00
100-42201-3210	Phones/radios/pagers	141.49
100-42201-3220	Internet	75.00
100-42201-3290	Other communication	9,052.00
100-42201-3390	Other-other	11.32
100-42201-5110	Fixed assets	15.88
100-42202-2310	Building repair & mainte	167.79
100-42202-3430	Cleaning service	699.00
100-42401-2110	Office supplies	19.99
100-42401-2290	Operating supplies	20.54
100-42401-3120	Computer & software su	3,585.00
100-42401-3210	Phones/radios/pagers	162.80
100-42401-3920	Dues & subscriptions	120.00
100-42501-3190	Other professional servi	303.00
100-43101-2210	Travel & personal prot	282.78
100-43101-2230	Travel	578.60
100-43101-2240	Office supplies	212.19
100-43101-2290	Operating supplies	443.13
100-43101-2320	Maintenance parts & suppl	55.85
100-43101-2340	Maintenance parts & supplies	504.19

Account Summary

Account Number	Account Name	Payment Amount
100-43101-2410	Hand tools	31.95
100-43101-3150	Personnel testing & recr	36.71
100-43101-3210	Phones/radios/pagers	306.11
100-43101-3470	Vehicle repair & mainten	379.97
100-43102-2290	Printing supplies	224.28
100-43104-2310	Printing repair & mainte	167.79
100-43104-3145	Monitoring	52.95
100-43104-3430	Printing service	148.00
100-43401-2250	Print signs	924.97
100-44101-2210	Printing & personal prot	143.79
100-44101-2320	Printment parts & suppl	101.28
100-44101-3210	Phones/radios/pagers	53.00
100-44102-2310	Printing repair & mainte	16.20
100-44102-3420	Printing repair & mainte	637.50
100-44201-2290	Printing supplies	550.99
100-44202-3430	Printing service	300.00
100-48101-4150	Reimbursable expense	1,660.00
211-41704-2120	Travel	1,414.30
211-41704-3990	Travel services and charg	400.00
230-34401	Vehicle drainage fees	200.00
231-43601-3630	Waste management & r	8,127.50
	Grand Total:	78,571.91

Project Account Summary

Project Account Key	Payment Amount
None	70,444.41
231001001	8,127.50
	Grand Total:
	78,571.91



City of Ham Lake, MN

EFT Payroll Check Register

Report Summary

Pay Period: 1/5/2025-1/18/2025

Packet: PYPKT01718 - PPE 1/18/25 PP 1/24/25

Payroll Set: City of Ham Lake - 01

Type	Count	Amount
Regular Checks	0	0.00
Manual Checks	0	0.00
Reversals	0	0.00
Voided Checks	0	0.00
Direct Deposits	75	54,505.18
Total	75	54,505.18

CITY OF HAM LAKE
ORDINANCE NO. 25-XX

FRANCHISE EXTENSION AGREEMENT

THIS AGREEMENT, effective upon passage and acceptance, between the City of Ham Lake, Minnesota (the “City”), and Comcast of Minnesota, Inc., a Minnesota corporation (“Comcast”).

WHEREAS, the City granted Comcast a non-exclusive franchise to construct, operate and maintain a cable television system through a cable television franchise ordinance accepted and agreed upon by Comcast (the “Franchise”);

WHEREAS, the City, is a member of the North Metro Telecommunications Commission (the “Commission”);

WHEREAS, Comcast and the Commission are parties to (1) a Memorandum of Understanding (MOU) dated January 29, 1996; (2) the 1997 Resolution Transferring Community Television Programming Responsibilities from Group W of the North Central Suburbs, d/b/a Meredith Cable to the North Central; and (3) the Franchise Settlement Agreement dated December 17, 2014 (collectively the “Agreements”);

WHEREAS, the term of the Franchise expired on or about December 31, 2020, and Comcast continued to operate under the terms and conditions of the Franchise; and

WHEREAS, the parties desire to extend the current Franchise and Agreements.

NOW, THEREFORE, THE CITY OF HAM LAKE ORDAINS AS FOLLOWS:

Section 1. Section 2.4 of the Franchise is hereby amended by extending the term of such Franchise through and including June 30, 2030. The Parties do not waive any rights under Section 626 of the Federal Cable Act and agree that Grantee shall not be required to file an additional Section 626 Letter to preserve its rights to formal proceedings under the Franchise.

Section 2. Except as specifically modified hereby, the Franchise shall remain in full force and effect.

Section 3. Neither party waives any rights under law as a result of agreeing to this Franchise extension.

Section 4. The Agreements shall remain effective so long as Comcast, including any successors or assigns, continues to operate under the Franchise, including as it may be extended pending the completion of the renewal process. Neither the Commission nor Comcast may terminate the Agreements prior to renewal.

Presented to the Ham Lake City Council on January 21, 2025 and adopted by a unanimous vote on this 3rd day of February, 2025.

CITY OF HAM LAKE

Mayor

ATTEST

City Clerk

APPROVED AS TO FORM

City Attorney

ACCEPTANCE BY COMCAST

Comcast agrees to the terms and conditions of this Ordinance and Franchise Extension Agreement.

COMCAST OF MINNESOTA, INC.

Kalyn Hove

Title: Regional Senior Vice President, Comcast Midwest Region

Date: _____

ACCEPTANCE BY NORTH METRO TELECOMMUNICATIONS COMMISSION

NORTH METRO TELECOMMUNICATIONS COMMISSION

Commission Chair

Date: _____

Meeting Date: February 3, 2025

CITY OF HAM LAKE

STAFF REPORT

To: Mayor and Councilmembers

From: Andrea Murff, Finance/Human Resource Director

Item/Title/Subject: Liability coverage waiver form

Introduction/: Discussion:

Every year when the City renews its property/casualty insurance, the City Council must decide on whether or not to waive the statutory tort liability limits. In the past, the City has decided not to waive the statutory limits. The options are further explained on the attached form.

Recommendation:

I recommend that the City not waive the monetary limits on municipal tort liability established by Minnesota Statutes 466.04.



LIABILITY COVERAGE WAIVER FORM

Members who obtain liability coverage through the League of Minnesota Cities Insurance Trust (LMCIT) must complete and return this form to LMCIT before their effective date of coverage. Email completed form to your city's underwriter, to pstech@lmc.org, or fax to 651.281.1298.

Members who obtain liability coverage from LMCIT must decide whether to waive the statutory tort liability limits to the extent of the coverage purchased. The decision to waive or not waive the statutory tort limits must be made annually by the member's governing body, in consultation with its attorney if necessary. The decision has the following effects:

- If the member does not waive the statutory tort limits, an individual claimant could recover no more than \$500,000 on any claim to which the statutory tort limits apply. The total all claimants could recover for a single occurrence to which the statutory tort limits apply would be limited to \$1,500,000. These statutory tort limits would apply regardless of whether the member purchases the optional LMCIT excess liability coverage.
If the member waives the statutory tort limits and does not purchase excess liability coverage, a single claimant could recover up to \$2,000,000 for a single occurrence (under the waive option, the tort cap liability limits are only waived to the extent of the member's liability coverage limits, and the LMCIT per occurrence limit is \$2,000,000). The total all claimants could recover for a single occurrence to which the statutory tort limits apply would also be limited to \$2,000,000, regardless of the number of claimants.
If the member waives the statutory tort limits and purchases excess liability coverage, a single claimant could potentially recover an amount up to the limit of the coverage purchased. The total all claimants could recover for a single occurrence to which the statutory tort limits apply would also be limited to the amount of coverage purchased, regardless of the number of claimants.

Claims to which the statutory municipal tort limits do not apply are not affected by this decision.

LMCIT Member Name: _____

Check one:

[] The member DOES NOT WAIVE the monetary limits on municipal tort liability established by Minn. Stat. § 466.04.

[] The member WAIVES the monetary limits on municipal tort liability established by Minn. Stat. § 466.04, to the extent of the limits of the liability coverage obtained from LMCIT.

Date of member's governing body meeting: _____

Signature: _____

Position: _____

Denise Webster

From: Brian Pogalz <mnhockeyguy@gmail.com>
Sent: Wednesday, January 8, 2025 8:40 AM
To: Jennifer Bohr
Subject: Re: RE: Planning Commission Term Renewal

Caution: This email originated outside our organization; please use caution.

Jennifer,

Yes, I would like to be considered for another term on the Planning Commission.

Thank you,

Brian Pogalz

On Wed, Jan 8, 2025 at 8:36 AM Jennifer Bohr <JBohr@hamlakemn.gov> wrote:

Good Morning Brian!

Your current term on the Planning Commission expires on 3/15/25. Please submit a response indicating whether or not you would like to serve another term by Monday, January 27, 2025. Thank you!

Warm regards,
Jennifer

Jennifer Bohr

Building & Zoning Clerk/Deputy City Clerk

City of Ham Lake

763-434-9555

www.hamlakemn.gov

New Email as of 9/11/24 jbohr@hamlakemn.gov

Denise Webster

From: drkr98@comcast.net
Sent: Monday, January 27, 2025 3:50 PM
To: Jennifer Bohr
Subject: Re: Planning Commission Term Renewal

I formally request my term to be renewed.



From: Jennifer Bohr <JBohr@hamlakemn.gov>
Sent: Wednesday, January 8, 2025 8:24 AM
To: Dave Ringler (drkr98@comcast.net) <drkr98@comcast.net>
Subject: RE: Planning Commission Term Renewal

Hi Dave!

Your current term on the Planning Commission expires on 3/15/25. Please submit a response indicating whether or not you would like to serve another term by Monday, January 27, 2025. Thank you!

Warm regards,
Jennifer

Jennifer Bohr

Building & Zoning Clerk/Deputy City Clerk

City of Ham Lake

763-434-9555

www.hamlakemn.gov

New Email as of 9/11/24 jbohr@hamlakemn.gov

Meeting Date: February 3, 2025



CITY OF HAM LAKE

STAFF REPORT

To: Mayor and Councilmembers

From: John Witkowski, Public Works Superintendent

Item/Title/Subject: Purchase of 2025 Volvo 70H Wheel Loader

Introduction/Discussion:

As a part of the 2025 Capital Improvement Plan (CIP), we planned on purchasing a new front-end loader from the Public Works Equipment Fund with an anticipated cost of \$322,900 for a new front-end loader. Quotes were obtained under State Contract Pricing from Nuss Trucking and Equipment in the amount of \$266,798 for a 2025 Volvo 70H Wheel Loader and from Lano Equipment, Inc. in the amount of \$50,621 for a Metalplex Pusher Snowplow with 6-foot wings attachment for the loader for snow removal. The total vehicle would come in at \$317,419 and would come from the Public Works Fund.

The current loader we are using, #71 – 2008 John Deere 544J Loader, would remain with the City as a backup for additional snow removal.

I then met with the Public Works Liaison's Councilmember Van Kirk and Doyle to discuss the purchase and quote. There was consensus by the liaisons to continue with the purchase process and to bring to Council for final approval.

Recommendation:

I recommend purchasing a 2025 Volvo 70H Wheel Loader from Nuss Equipment to be funded by the Public Works Equipment Fund for \$317,419.



TRUCK & EQUIPMENT

Nuss Truck & Equipment

12540 Dupont Avenue South

Burnsville, MN 55337

952-894-9595 / 800-552-1189

Fax 952-894-1619

www.nussgrp.com

City of Ham Lake Public Works

January 15, 2025

Dear John,

Thank you for the opportunity of quoting you our New 2025 Volvo L70H Wheel Loader. This unit will have all standard manufactured equipment features:

Standard Equipment

- Volvo D6J Tier 4F (175 hp)
- Volvo Powertrain with Powershift Transmission
- Load sensing hydraulics
- Operating Weight 30,000 lbs.
- Differential Lock Operator Controlled
- 59 Gallon Fuel Tank with DEF
- Remote Oil Drain and Fill (Engine & Transmission)
- Ground Level Lubrication
- Quick Connect Hydraulic Test Ports
- Three Stage Engine Air Clear
- Pre Heating of induction Air
- Fuel Filter with Water Separator
- Crankcase Breather oil trap
- Reversible Cooling Fan
- 24 Volt pre wired
- 24V 80A alternator
- Two Front High/Low Beam Lights
- Double Brake and Tail Lights
- 2 Front/Rear Work Lights
- Turn Signals and Brake Lights with Hazard Lights
- Steel Battery Boxes
- Contronic Monitoring System for Service/Operational Items
- Automatic Powershift Transmission Fully automatic 1-4
- Operator controlled Gear Shifting L-M-H
- Forward/Reverse Switch on right Side
- 100% Differential Lock on Front with conventional Rear
- Indicator Glass for Transmission Oil Level
- Dual Brake Circuit/Pedals
- Secondary Brake System
- Parking Brake Electrical/Hydraulic
- Break Wear Indicators
- Single Key for Doors and Starting
- ROPS/FOPS Cab
- 12V Power Outlet
- Lockable Doors and Engine Panels
- Cab Heat with Fresh Air inlet and Defroster
- Dual Mirror's Inside/Outside of Cab
- Sliding Left/Right Side Window's
- Tinted Safety Glass
- Seat Belt
- Adjustable Steering Wheel
- Sun Visor
- Intermittent Front/Rear Wiper/Washers
- Electric Level Lock
- Automatic Boom Kick Out
- Automatic Bucket Positioner

: Benefits

- : Great Fuel Economy
- : All Volvo Power Train
- : Applies hydraulic power where needed
- : Better Machine Stability
- : Front Axle may be locked with 100% Lock
- : Lower Fuel Consumption Less Fills

- Hydraulic Oil Cooler
- Vandalism Locks For Batteries/Engine/Cab/Radiator

Added Machine Options

Sales Code	Description	MNDOT Price
L70H2	Volvo L70H GPE Wheel Loader	\$ 149,756
WL20019	20.5R25* L-2 Michelin Snoplus (4)	\$ 16,202
WL21004	4-Rims (3pc) for 20.5 or 600 tires	\$ 2,761
WL32017	Engine D6J (Tier 4F) US	\$ -
WL30007	Fuel fill strainer	\$ -
WL30024	Delayed Engine Shutdown	\$ 125
WL37001	Reversible cooling fan	\$ 832
WL39501	Rimpull	\$ -
WL41019	Comfort ISRI, 2pt seat belt	\$ 1,792
WL42001	Air conditioning with ACC (automatic climate control)	\$ 4,412
WL43006	Radio in Copilot 2.0 BlueTooth/USB/AUX	\$ 668
WL44008	LH Copilot 2.0 Radio mounting kit including 20 amp converter, speakers & 12v outlet	\$ 703
WL44101	Handsfree in CO-pilot 2.0	\$ 25
WL45001	Steering knob	\$ -
WL45003	Sliding window in door	\$ -
WL45004	ACC Fahrenheit decal only	\$ -
WL45005	Universal key	\$ -
WL45019	Secondary steering, electric	\$ -
WL45023	Lunch box holder	\$ -
WL45027	Anchorage manual	\$ -
WL45065	Volvo Co-pilot 2 incl Camera	\$ 3,015
WL45068	No OnBoard Weighing Hard Ware	\$ -
WL88201	Operator Coaching Start	\$ -
WL54001	Back up alarm	\$ -
WL65013	Max Boom Height	\$ -



WL71002	Oil sampling ports	\$ 203
WL71005	Footsteps front frame	\$ 198
WL71009	Footstep, right side	\$ -
WL80001	Boom Suspension System (" Ride Control" . Includes single acting lift system.)	\$ 4,201
WL83004	Decals, English/Spanish	\$ -
WL86013	Cover plates, rear frame	\$ -
WL86041	Frame, life time warranty	\$ -
WL88010	CareTrack Connectivity 4 yr Subscription	\$ -
WL88018	CareTrack, GSM/Satellite	\$ -
WL88020	De-activate SAT	\$ -
WL22003	Full coverage fenders, front/rear for wide tires	\$ 590
WL23001	Mudflaps for full fenders for wide tires	\$ 469
WL30011	Engine auto shutdown	\$ 474
WL31005	Air precleaner, turbo type III	\$ 884
WL35001	Limited slip rear axle	\$ 3,102
WL39007	Lockup converter	\$ 2,217
WL45024	Comfort Drive Contr, CDC, el-hydr (Joystick Steering)	\$ 6,643
WL45052	CoPilot with rear view camera + OBW Hardware (must select WL88205)	\$ 3,711
WL88205	OnBoard Weighing Software (requires OBW hardware)	\$ 2,510
WL47006	Single lever Ctrl,4 Functions (hydraulic and 3rd funct detent function included)	\$ 5,634
WL45203	Rearview mirrors, electric/heat long arm RH	\$ 465
WL50024	LED Power Package	\$ 4,119
WL51003	Warning Beacon, LED	\$ 571
WL64001	Separate attachment locking, std. boom	\$ 1,625
WL70001	Auto lube for attachment bracket, std. or long boom	\$ 339
WL70003	Auto lube for standard boom	\$ 8,031
WL81001	Counterweight, logging (can't be ordered w/ solid tires or L5 tires)	\$ 935
WL85003	HD tail light guards	\$ 684



WLA85346	Attachment bracket (Must select Hook-on attachments)	\$ 4,701
WLA83771	87" Fork frame - standard	\$ 4,234
WLA83013	72" straight fork tine, 6" X 2.4"	\$ 1,484
WLA83013	72" straight fork tine, 6" X 2.4"	\$ 1,484
	Pemberton 108" 3.0yd Hook On Grapple Bucket With BOCE for Volvo QC	\$20,500
	1yr 2,000hr Full Machine Warranty Including TT&M	
	5yr, 3,000 Emissions Warranty	
	Lifetime Frame Warranty	

2025 State Bid Price.....\$ 260,298.00

Metal Pless Snow Plow Installation:

To Include: Plow must be delivered to Nuss Truck (Roseville) Nuss to Install Electrical From Plow Diverter Valve to Cab, We will Install Stucchi Hydraulic Quick Fit Connectors and Moving Lines to one side. We will make and Install Hoses from Plow to Stucchi Connectors. We will also install Stucchi Plate on Grapple Bucket. Delivery to the City of Ham Lake

Bid Price.....\$ 6,500.00

Total for Loader with Snow Equipment Install.....\$ 266,798.00

I appreciate your time and consideration regarding the above quote. If you have any questions, please call me at (763) 486-6774.

Sincerely,
Eric Supan
Regional Sales Manager
esupan@nussgrp.com
763-486-6774





3021 W 133rd St • Shakopee, MN 55379 • 952-445-6310
 6140 Hwy 10 NW • Anoka, MN 55303 • 763-323-1720
 23580 Hwy 55 • Loretto, MN 55357 • 763-479-8200
 www.lanoequip.com • www.lanoeq.com • www.lanogardengear.com

QUOTE - DO NOT PAY

Quote: 02-182764
 Date: 12/16/2024

PO: PRO 1248-22LE
 CustId: CITYHAMLAKE

Cust Email: accounts payable@ci.ham-lake.mn.us
 Phone: (763) 434-9555
 Salesperson: Scott.F
 User: Scott.F

Bill To:

CITY OF HAM LAKE
 JOHN WITKOWSKI
 15544 CENTRAL AVE NE
 HAM LAKE, MN 55304

Ship To:

CITY OF HAM LAKE

MN STATE CONTRACT RELEASE T-632(5) CONTRACT NUMBER 246985 EXPIRES 3/31/25

INCLUDES PICKUP AND DELIVERY OF LOADER AND BLADE FOR INSTALL

ASSUMES LOADER HAS AUX PIPING DOWN THE LOADER TO A BULKHEAD WITH HYDRAULIC COUPLERS.

Item	Type	Description	Qty	Tax	Price	Discount	Net Price
BLADE-PRO1248 / NEW	QU	Metal Pless BLADE-PRO1248	1.0000		\$49,775.00	\$3,484.25	\$46,290.750
		S/N: PRO1248-24LE-2307-12910					
		ATT - METAL PLESS PRO1248-24LE,VOLVO CPLR,DVDE3					
		Line Discount: 7.00%				(\$3,484.25)	
		Total BLADE-PRO1248 / NEW					\$46,290.75
SH	MC	SHIPPING & HANDLING	1.0000		\$2,890.00		\$2,890.00
PARTS	MC	Misc Part	1.0000		\$760.00		\$760.00
Remark	RE	HOSES AND COUPLERS ON BLADE					
LABOR	MC	Labor	4.0000		\$170.00		\$680.00
Total:							\$50,620.75

Totals		Sub Total:	\$50,620.75
		Total Tax:	\$0.00
		Invoice Total:	\$50,620.75

Signature: _____

Quote is Valid for 30 days, programs and discounts subject to change without notice

Meeting Date: February 3, 2025



CITY OF HAM LAKE

STAFF REPORT

To: Mayor and Councilmembers

From: John Witkowski, Public Works Superintendent

Item/Title/Subject: Snow Plow Truck Change Order

Introduction/Discussion:

During the July 5, 2023 Council meeting, it was approved to purchase two 2024 Mack Single Axle Plow Trucks to replace trucks #89 and #54 and to be funded from the Public Works Equipment Fund. Truck #89 would be sold in auction and #54 would remain at the City as a backup snow plow. The order was placed after the approval; however, it was delayed.

I then met with the Sales Representative that suggested we switch one of the trucks over to a Volvo VHD to ensure less delays in delivery. We will be able to accept delivery as soon as the spring/summer of 2025 whereas the Mack still looks like winter 2025-26 best case scenario. The trucks are interchangeable, since Volvo makes Mack, and would use the same parts for repairs. The quote for the cab and the chassis would increase \$4,543, but the build out of the truck would remain the same.

I met with the Public Works Liaison's Councilmembers Van Kirk and Doyle to discuss changing the purchase of a Mack Single Axle Snow Plow Truck to a Volvo VHD plow truck and there was consensus that the change was appropriate.

Recommendation:

I recommend changing one of the previously ordered 2024 Mack Single Axle Plow Trucks to a Volvo VHD.

Date: July 5, 2023



CITY OF HAM LAKE

STAFF REPORT

To: Mayor and Councilmembers

From: John Witkowski, Public Works Superintendent

Item/Title/Subject: Purchasing two Snow Plow Trucks

Introduction/Discussion:

I met with the Public Works Liaison's Councilmember Kirkeide and Councilmember Doyle to discuss the purchasing of two new Single Axle Snow Plow Trucks. As a part of the 2023 Capital Improvement Plan (CIP) we have budgeted for the two new 2024 Mack Single Axle Plow Trucks. The trucks will be purchased under State Contract pricing and are expected to arrive the beginning of 2025. The cost of the chassis will be \$151,081.85 from Nuss Trucking and Equipment and \$173,588.00 from Towmaster Truck Equipment for the plow equipment. Total cost of each truck will be \$324,669.85. One of the trucks will be replacing #89 which we will be sold at auction and the other truck will replace #54 which will be held as an alternate for when another plow truck is in need of repair.

Recommendation:

We are recommending purchasing two 2024 Single Axle Mack plow trucks under State Contract pricing with the monies coming from the Capital Improvement Plan (CIP) and selling truck #89 at auction.

Prior approval from 7/5/2023

Exhibit D: Price Schedule

Price quote for: **SINGLE AXLE CAB & CHASSIS**

Vendor Name: **Nuss Truck and Equipment**
Contact Person: **Dan Chipman**
Street Address: **2195 WEST COUNTY ROAD C2**
P.O. Box:
City, State, Zip: **ROSEVILLE, MN 55113**
Phone #: **612-297-6496**
Toll Free #: **800-704-0935**
Fax #: **651-635-0928**
Email Address: dchipman@nussgrp.com

Version of Excel used:

2013

Spec #	Information Requested	Answer
1.0	Make & Model	2024 MACK GRANITE 42BR SA
	C.A. & W.B. dimension	92" CA, 180" Wheelbase
	Front Axle Location (Set Forward, Set Back)	Set Back
	Frame, Steel PSI	120,000 PSI
	Frame, Section Modulus	17.7 SM
	Frame, Resistance to Bending Moment	2,120,000 RBM
	Frame overhang length	62"
	Type of fasteners used on frame members	Huck
	Front bumper description	Swept Back Steel
	Front Axle Type & Size	Mack FXL12, 12,000 lbs.
	Front Spring length	55"
	Front brake size	16.5" x 5" Bendix ES165-05D
	Front Brake chamber size	24"
	U Joint Make, Model & Type (1/2 round, etc.)	Meritor 17 MXL Extended Life
	Rear Axle Type & Size	Mack RA23R

Prior approval from 7/5/2023

Rear brake size	16.5" x 7" Bendix ES165-07D
Rear brake chamber size	30/30
Parking Brake Type & Model #	Haldex/Anchorlok
Front Tire Make & Size	11R22.5 14 Ply Bridgestone R283A
Front Rim Size & Rating	22.5 x 8.25 7,800 lbs
Rear tire make & size	11R22.5 14 PLY Bridgestone M726EL
Rear rim size & rating	22.5 X 8.25 7,800 LBS
Air compressor type & size	Meritor/Wabco 18.7 CFM
Air dryer info	Meritor 1200
Engine type, HP & torque	Mack MP7-325M - 325HP @ 1400 - 1900 RPM 1260/LB/FT Max Torque
Type of engine fan drive	Behr Fan & Electronic Modulating Fan Drive
Exhaust description	Diesel Particulate Filter Cleartech one DPF/SCR RH side under cab
Starter motor Make & Model	Delco 39MT-MXT
Right side steering assist (Auxiliary gear, hydraulic ram or none)	None
Transmission Make & Model, # of Speeds	Eaton Fuller FRO-14210C
Clutch size and # of plates	15.5" Two Plate
Battery CCA, # of batteries, CCA of each battery	Three Mack 650/1950 CCA
Fuel tank size, shape and material	66 Gallon LH Aluminum 22" Dia Sleeved D-Shape
Alternator Type & Size	Delco 12V 130A (24SI Brush Type)
Radiator Sq in & Material	Aluminum Core
Type and number of horns	One Mack Rectangle Air

Prior approval from 7/5/2023

Cab ride (type of mounting)	Air Ride Cab
Cab size door to door, floor to ceiling	78", 62"
Distance of cab floor to ground	47"
Description of seats supplied with base cab & chassis	Bostrum Talladaga 915 Mid-Back Air Driver Seat, Fixed Mack Mid-Back Passenger Seat
Windshield washer nozzle location	Mounted on Wiper Arm
Interior package (Low, Med or Premium)	Low
Does unit include cruise control	Yes
How is dome light activated	Door & Cab Switch
Steering wheel adjustment (tilt, telescoping, etc.)	Tilt & Telescoping
Cab grab handle locations	RH & LH Behind Door
Storage pocket description	Two Storage Compartment & Net Retainers with Center Mounting for CB Provisions
Cab Gauges, List	Air Pressure, Voltmeter, Engine Coolant Temperature, Engine Oil Pressure, Speedometer, and Tachometer, Exhaust Pyrometer, and Transmission Oil Temperature
Dimmer switch location	Turn Signal
Paint description	Mack White
Cab & chassis warranty (time & mileage)	One Year or 100,000 Miles
Engine warranty (time & mileage)	Two Years or 250,000 miles
Transmission warranty (time & mileage)	Mack - Five Years or 500,000 Miles
Rear end warranty (time & mileage)	Mack - Five Years or 500,000 Miles
Delivery of chassis starting point	Roseville, MN 55113
Estimated weight on front axle of base unit	6108

Prior approval from 7/5/2023

Estimated weight on rear axle of base unit

6816

Prior approval from 7/5/2023

				Print Date & Time	6/21/2023 15:07
Single Axle Cab & Chassis					
Exhibit D: Price Schedule					
		VENDOR NAME	NUSS TRUCK & EQUIPMENT		
		MAKE AND MODEL	2024 MACK GRANITE 42BR SA		
This section for use					
WB		187"			
CA		99" (Towmaster to		Grand Total	\$ 151,081.85
AF		63"			
Rear		4.30			
Cab		RED (9448284)			
Wheel		White			
Notes	City of Ham Lake, Updated 6.20.23				
Code	Spec #	Description	Qty	2024 Price	Subtotal
	1.0	Price for base unit:	1	\$ 105,396.41	\$ 105,396.41
	2.0	FRAME OPTIONS			
AOXF3X	2.1	Front frame extension	1	\$ 1,187.00	\$ 1,187.00
MC	2.16	2,820,000 23.5	1	\$ 521.00	\$ 521.00
	3.0	FRONT			
240AA3	3.6	20,000 front axle and	1	\$ 2,147.00	\$ 2,147.00
UDXA1X	3.13	Front brake dust	1	\$ 18.00	\$ 18.00
245AB0	3.14	Dual front auxiliary	1	\$ 569.00	\$ 569.00
MC	3.23	HD taperlead (3 leaf	1	\$ 65.00	\$ 65.00
U0AB8X	3.26	Meritor front slack	1	\$ 58.00	\$ 58.00
MC	3.29	Meritor front brakes	1	\$ 131.00	\$ 131.00
	4.0	4.0 SINGLE REAR			
UEXA1X	4.25	Rear brake dust	1	\$ 18.00	\$ 18.00
252AB1	4.27	Meritor RS-30-185	1	\$ 1,812.00	\$ 1,812.00
254AB4	4.32	Driver controlled	1	\$ 484.00	\$ 484.00
260AB2	4.37	30,000 lbs Mack	1	\$ 515.00	\$ 515.00
195AA9	4.46	Meritor 175 MXL	1	\$ 32.00	\$ 32.00
U1AB8X	4.54	Meritor automatic rear	1	\$ 231.00	\$ 231.00
253AA4	4.55	Meritor 16.5" x 7" rear	1	\$ 58.00	\$ 58.00
	5.0	INTENTIONALLY			
	6.0	TIRES/RIMS			
MC	6.1	Nylon wafers or wheel	1	\$ 44.00	\$ 44.00
900AC0	6.7	10,000 lb. 22.5 9"	1	\$ 407.00	\$ 407.00
901BG1	6.45	11R22.5 G Michelin	1	\$ 946.00	\$ 946.00
	7.0	BRAKE SYSTEM			
UWXE3X	7.4	Auto drain valves on	1	\$ 31.00	\$ 31.00
300AA3	7.23	Haldex "Gold Seal"	1	\$ 1.00	\$ 1.00
141OF1	7.36	Air reservoir in frame,	1	\$ 48.00	\$ 48.00
	8.0	ENGINE/EXHAUST			
		(List Make & Model,			
1000W0	8.4	Mack MP7-425M	1	\$ 1,508.00	\$ 1,508.00
MC	8.15	Clear Back of Cab -	1	\$ 114.00	\$ 114.00
130AD7	8.19	No Muffler, Single	1	\$ 318.00	\$ 318.00
Q0AC1X	8.30	Single, Bright finish	1	\$ 65.00	\$ 65.00
223AA3	8.96	Bright Finish Fuel	1	\$ 32.00	\$ 32.00

Prior approval from 7/5/2023

	9.0	ENGINE RELATED					
1VAADX	9.7	Donaldson Single	1	\$	323.00	\$	323.00
HWXD1X	9.12	Coolant spin on	1	\$	47.00	\$	47.00
183AA2	9.13	Front engine powered	1	\$	103.00	\$	103.00
124AB3	9.17	Radiator hose	1	\$	240.00	\$	240.00
5NXA1X	9.20	Engine block heater	1	\$	65.00	\$	65.00
119AA6	9.27	Extended life anti-	1	\$	20.00	\$	20.00
SSOILP	9.50	Stainless steel oil pan	1	\$	1,950.00	\$	1,950.00
NDXA1X	9.54	Electric preheater	1	\$	53.00	\$	53.00
	10	TRANSMISSION					
		(After the first six					
7RXAEX	10.5	Synthetic (TranSynd)	1	\$	301.00	\$	301.00
136AS6	10.15	Allison 4500-RDS 6	1	\$	14,772.00	\$	14,772.00
139019	10.56	Stainless steel	1	\$	175.00	\$	175.00
	11	ELECTRICAL					
318AA3	11.5	Battery disconnect	1	\$	111.00	\$	111.00
NJXA3X	11.15	Switch for snowplow	1	\$	80.00	\$	80.00
136SPD	11.18	Vehicle speed sensor	1	\$	20.00	\$	20.00
393AC4	11.19	Stacked Battery Box	1	\$	48.00	\$	48.00
L5XF1X	11.23	Polished aluminum	1	\$	52.00	\$	52.00
MOXAAX	11.27	Battery shock pad	1	\$	4.00	\$	4.00
EAXAUX	11.34	Eight switches - front	1	\$	237.00	\$	237.00
5RXA6X	11.36	Ecco back-up alarm	1	\$	74.00	\$	74.00
NEXD2X	11.44	LED type tail lights	1	\$	199.00	\$	199.00
	12	CAB EXTERIOR					
152AA4	12.5	Heated mirrors per	1	\$	104.00	\$	104.00
26XA1X	12.17	Bulterfly option on	1	\$	413.00	\$	413.00
148AA5	12.23	Arctic winter wiper	1	\$	19.00	\$	19.00
JQXABX	12.24	Optional windshield	1	\$	26.00	\$	26.00
145AA5	12.42	Heated windshield	1	\$	425.00	\$	425.00
WSXAAX	12.43	One piece windshield	1	\$	83.00	\$	83.00
OEAA1X	12.45	Bright finish hood	1	\$	16.00	\$	16.00
400AA6	12.46	Bright finish bars with	1	\$	240.00	\$	240.00
312AB5	12.49	Led type marker &	1	\$	75.00	\$	75.00
153AA3	12.51	Heated convex	1	\$	34.00	\$	34.00
15HONH	12.57	10" round bright finish	1	\$	234.00	\$	234.00
	13	CAB INTERIOR					
	13.1	Medium grade				\$	-
004AA5	13.5	Slate Gray Color with	1	\$	292.00	\$	292.00
	13.6	Premium grade				\$	-
146AA3	13.13	Power window/both	1	\$	325.00	\$	325.00
1960V6	13.34	Air-Sears Atlas 80 hi-	1	\$	374.00	\$	374.00
1970E7	13.40	Mack fixed hi-back	1	\$	44.00	\$	44.00
5870D7	13.58	Diagonal grab handle	1	\$	35.00	\$	35.00
MC	13.63	5lb fire extinguisher	1	\$	66.00	\$	66.00
MC	13.64	Reflector kit parallel to	1	\$	27.00	\$	27.00
	14	MN/DOT OPTIONS:					
M510Z1	14.80	Engine Plan 2 60	1	\$	2,826.00	\$	2,826.00
M53083	14.14	Engine after-treatment	1	\$	912.00	\$	912.00
	15	TRAILER TOW					
WHXQ2X	15.1	Trailer tow package	1	\$	317.00	\$	317.00
WHXG6X	15.2	Trailer package		\$	417.00	\$	-
321031	15.3	Single 7 pin SAE type,	1	\$	117.00	\$	117.00

Prior approval from 7/5/2023

WGXA1X	15.5	Hand control valve for	1	\$ 47.00	\$ 47.00		
	16	MANUALS /					
	16.4	Premium Tech Tool	1	\$ 4,000.00	\$ 4,000.00		
	20	Next Model Year					
		Enter the following		2025			
	20.1	Percentage Upcharge	1	3.00%	\$ 3,161.89		
	20.2	Percentage Upcharge	1	3.00%	\$ 1,238.55		
				Total Cost:	\$ 151,081.85		



TOWMASTER, 61381 US HWY 12, LITCHFIELD, MN 55355
 PH: 320-693-7900 FX: 320-693-7921 TF: 800-462-4517
 TOWMASTERTRUCK.COM

Prior approval from 7/5/2023

Reference No.
 QT 76944

**** QUOTATION ****

Ship To: HAM LAKE, CITY OF 15544 CENTRAL AVE NE HAM LAKE MN 55304 USA	Cust: 2916 Phone:	Bill To: HAM LAKE, CITY OF 15544 CENTRAL AVE NE HAM LAKE MN 55304	Phone:
---	------------------------------------	---	---------------

ATTN: JOHN WITKOWSKI 763-434-9555

PO#	Salesman	Terms	Created	Last Revised	Appx Comp
	JOSH PAULSON	NET 30 DAYS	1/10/23	6/01/23	1/15/22

Serial No. [REDACTED]

Order Comments: STATE OF MN CONTRACT #222949

Build Instructions F.O.B. LITCHFIELD, MN -OR- CUSTOMERS W/FUEL CHARGES ONLY

Other Instructions VALID THRU 09/31/23

Qty	Part No.	Description	Price Ea.	Net Amt.
1	9900118	- Body 10'6" EDGE-RS/SCIS-46-36-36 - - 46" 7 ga Stainless Front, 36" 7 ga Stainless radius sides (No Pockets), 36" 7 ga Stainless Tailgate w/Hardox-450 Face, 1/4" Hardox-450 Floor, 8" I-Beam Longsills, Air-trip ready linkage, Underside Black	\$23,429.00	\$23,429.00
1	9901701	- Installation of Dump Body to hoist	\$2,262.00	\$2,262.00
1	9900145	- Body acc'y TMTE Air trip kit, w/solenoid valve,	\$399.00	\$399.00
1	9901702	- Installation of air operated tailgate latch kit, with solenoid valve in hydraulic valve enclosure.	\$425.00	\$425.00
1	9900147	- Body acc Box Vibrator - Cougar model DC3200	\$796.00	\$796.00
1	9901703	- Installation of Box Vibrator, with solenoid located in hydraulic valve enclosure.	\$496.00	\$496.00
1	9900156	- Cabshield, 1/2 type Stationary Free-Standing style,w/plain STAINLESS STEEL canopy, Hot-Dipped Galvanized tubing construction support stand, Slotted Center Viewing Window, (2) shovel holders, & reservoir mounts, Installed.	\$4,551.00	\$4,551.00
1	9900207	- Ladder Flip-A-Way Access ladder (STAINLESS STEEL) Including Grab Handle above, and Interior Step, ea, Installed **NOTE: LOCATED AT LH FRONT AREA OF SIDE PANEL.	\$827.00	\$827.00
1	9900211	- Body acc'y Dual "split" sander manifolds in rear corner posts	\$534.00	\$534.00

--- Continued ---

Accepted by _____ Date _____

Price:
 Total Discounts:
 Net Cost:
 Freight
 Total:



TOWMASTER, 61381 US HWY 12, LITCHFIELD, MN 55355
 PH: 320-693-7900 FX: 320-693-7921 TF: 800-462-4517
 TOWMASTERTRUCK.COM

Prior approval from 7/5/2023

Reference No.
 QT 76944

**** QUOTATION ****

Ship To: HAM LAKE, CITY OF 15544 CENTRAL AVE NE HAM LAKE MN 55304 USA	Cust: 2916 MN 55304	Phone:	Bill To: HAM LAKE, CITY OF 15544 CENTRAL AVE NE HAM LAKE MN 55304	Phone:
---	---	---------------	---	---------------

ATTN: JOHN WITKOWSKI 763-434-9555

PO#	Salesman	Terms	Created	Last Revised	Appx Comp
	JOSH PAULSON	NET 30 DAYS	1/10/23	6/01/23	1/15/22

Serial No.	Description	Price	Appx Comp
1 9900214	- Body acc'y Tailgate LEVER TOP PIN release (Single Axle bodies only)	\$852.00	\$852.00
1 9904963	- Light Warning TMTE1SSM-3 PKG: 1/2 A 1/2 B, (2) SS 23H 3-light LED Micro-Edge, 2) 5M-400 Super-LED, (2) Side TIR3 LED, (2	\$5,111.00	\$5,111.00
2 9902519	- Light WHELEN MICRO PIONEER spot light, Installed **NOTE: MOUNTED ON FRONT AREA OF CABSHIELD FACING FORWARD, FOR AXUILLARY LIGHTING, AND WIRED TO OEM ACC'Y SWITCH IN DASH OF CAB.	\$820.00	\$1,640.00
1 9905778	- Light, Mirror Mounted ABL 3800 LED HEAD LAMP PLOW LIGHTS W/ICE MELTING TECHNOLOGY Installed	\$1,506.00	\$1,506.00
1 9900266	- Fender set Minimizer MIN2260, for Single Axle, black Poly, Installed	\$1,195.00	\$1,195.00
1 1965280	- Minimizer FKMAC2B Floor Mat Set for MACK SGL & TDM	\$249.00	\$249.00
1 9900970	- Tire Chains ON-SPOT for 1 Axle Installed	\$4,112.00	\$4,112.00
1 9904691	- INSTALLATION of (Initial) Single camera system **NOTE: MOUNTED ON RH STROBE TUBE FOR WING VIEWING USAGE	\$426.00	\$426.00
2 9904692	- Camera System option, NORTECH 9100-2HC 120 degree night vision CCD weather-proof HEATED camera, only GEN 5 6100	\$182.00	\$364.00
2 9904693	- Camera System option, NORTECH 9100-4 Harness, 65' Waterproof GEN 5 6100	\$118.00	\$236.00
1 9904694	- INSTALLATION of Extra Camera, & Harness GEN 5 6100 MOUNTED ON LH REAR CORNER POST QUED TO REVERSE SIGNAL FOR REVERSE	\$213.00	\$213.00

--- Continued ---

Accepted by _____

Date _____

Price:

Total Discounts:

Net Cost:

Freight

Total:



TOWMASTER, 61381 US HWY 12, LITCHFIELD, MN 55355
 PH: 320-693-7900 FX: 320-693-7921 TF: 800-462-4517
 TOWMASTERTRUCK.COM

Prior approval from 7/5/2023

Reference No.
 QT 76944

**** QUOTATION ****

Ship To: HAM LAKE, CITY OF 15544 CENTRAL AVE NE HAM LAKE MN 55304 USA	Cust: 2916 Phone:	Bill To: HAM LAKE, CITY OF 15544 CENTRAL AVE NE HAM LAKE MN 55304	Phone:
---	------------------------------------	--	---------------

ATTN: JOHN WITKOWSKI 763-434-9555

PO#	Salesman	Terms	Created	Last Revised	Appx Comp
	JOSH PAULSON	NET 30 DAYS	1/10/23	6/01/23	1/15/22

Serial No.

VIEWING

Qty	Part No.	Description	Price Ea.	Net Amt.
1	1941405	- Camera Guard, SS, Bolt-On	\$43.00	\$43.00
1	9905502	- PreCise ARC Sensor Mount #1126929, only GEN 5 6100	\$60.00	\$60.00
1	9905835	- PreCise ARC Sensor #1117640, only, for Wireless GEN 5 CONTROLLER Applications (LESS MTG BRKT), installed	\$734.00	\$734.00
1	9900958	- Pre-Wet Towmaster/Varitech LDS-TMR-110-EGF Body Side Mt Sys for Elliptical body (2) 55 ga 1 tanks, mtg hardware, plumbing, Electric Gravity Feed valve	\$1,809.00	\$1,809.00
1	9902483	- Installation of TMR pre-wet system (New Towmaster Body)	\$1,275.00	\$1,275.00
1	9901834	- Hoist OSP/Towmaster 720DH, Double Acting, W/Solid block rear hinge point, & OSHA approved safety props	\$5,526.00	\$5,526.00
1	9901712	- Installation of SCISSORS TYPE double acting hoist	\$2,373.00	\$2,373.00
1	9902924	- Scraper FALLS IB-10A 1" MB, w/single lift cylinder W/12" bolt-on extension (11' total), LESS CUTTING EDGES	\$9,449.00	\$9,449.00
2	9903277	- VBL PolarFlex 4' Underchassis Complete System (includes bolts & nuts)	\$1,154.00	\$2,308.00
1	9903276	- VBL PolarFlex 3' Underchassis Complete System (includes bolts & nuts)	\$865.00	\$865.00
1	9901705	- Installation of underbody fixed angle scraper w/single lift cylinder	\$3,546.00	\$3,546.00
1	9904232	- Scraper FORCE Electric pressure transmitter to read on LCD screen, installed	\$429.00	\$429.00

--- Continued ---

Accepted by

Date

Price:

Total Discounts:

Net Cost:

Freight

Total:



TOWMASTER, 61381 US HWY 12, LITCHFIELD, MN 55355
 PH: 320-693-7900 FX: 320-693-7921 TF: 800-462-4517
 TOWMASTERTRUCK.COM

Prior approval from 7/5/2023

Reference No.
 QT 76944

**** QUOTATION ****

Ship To: HAM LAKE, CITY OF 15544 CENTRAL AVE NE HAM LAKE MN 55304 USA	Cust: 2916 MN 55304	Phone:	Bill To: HAM LAKE, CITY OF 15544 CENTRAL AVE NE HAM LAKE MN 55304	Phone:
---	---	---------------	---	---------------

ATTN: JOHN WITKOWSKI 763-434-9555

PO#	Salesman	Terms	Created	Last Revised	Appx Comp
	JOSH PAULSON	NET 30 DAYS	1/10/23	6/01/23	1/15/22

Serial No.	Description	Price	Appx Comp
1 9900351	- Scraper FORCE reverse/Auto-Lift system, ADD-A-FOLD valve, installed	\$523.00	\$523.00
1 9902941	- Wing Falls RHSDL9A-HYDPB Primed LESS CUTTING EDGES	\$13,631.00	\$13,631.00
1 9900388	- Installation Falls SDL Series Wing - w/Bulkhead Couplers	\$6,173.00	\$6,173.00
1 9901431	- Wing Falls RL (REAR LIFT) up charge SDL WING	\$597.00	\$597.00
1 9904688	- Wing Falls POST-LESS Toe Lift in lieu of Std Front post/slide system		
3 9902871	- VBL 3/4" x 6" - 3' w/25 ^{HL} Tungsten Carbide Insert, Std Punch, Flat Blade	\$242.00	\$726.00
	**NOTE: FOR WING APPLICATION		
1 9900480	- Wing Falls Red - Paint Moldboard	\$430.00	\$430.00
1 9900567	- Plow Hitch Falls 46XB2/STD/STD/SA/SPR-RET/HITCH	\$3,064.00	\$3,064.00
1 9900589	- Installation Falls Plow Hitch - 40 Series 3Line/STDBLRHD	\$2,432.00	\$2,432.00
1 9900619	- Plow Push Unit Falls 20/26/40/46 Series Std	\$1,124.00	\$1,124.00
3 9902827	- VBL PolarFlex 4' Front Mount Complete System (includes bolts & nuts)	\$1,081.00	\$3,243.00
	**NOTE: FRONT PLOW APPLICATION		
1 9900637	- Plow Falls High Visibility Marker Set	\$142.00	\$142.00
1 9900639	- Plow Falls Rubber Belt Deflector Kit - Installed	\$471.00	\$471.00

--- Continued ---

Accepted by _____ Date _____

Price:
 Total Discounts:
 Net Cost:
 Freight
 Total:



TOWMASTER, 61381 US HWY 12, LITCHFIELD, MN 55355
 PH: 320-693-7900 FX: 320-693-7921 TF: 800-462-4517
 TOWMASTERTRUCK.COM

Prior approval from 7/5/2023

Reference No.
 QT 76944

**** QUOTATION ****

Ship To: HAM LAKE, CITY OF 15544 CENTRAL AVE NE HAM LAKE MN 55304 USA	Cust: 2916 Phone:	Bill To: HAM LAKE, CITY OF 15544 CENTRAL AVE NE HAM LAKE MN 55304	Phone:
---	------------------------------------	---	---------------

ATTN: JOHN WITKOWSKI 763-434-9555

PO#	Salesman	Terms	Created	Last Revised	Appx Comp
	JOSH PAULSON	NET 30 DAYS	1/10/23	6/01/23	1/15/22

Serial No.	Description	Price	Appx Comp
1 9903057	- Plow Falls PR1243/SPR-TRP/NOSHU/PRI-E1/10GA LESS CUTTING EDGES	\$9,078.00	\$9,078.00
1 9900682	- Plow Falls Red Paint, Rev Plow, w/installation	\$570.00	\$570.00
1 9900805	- Sander Falls 1ASD9SS-4P-1D-1S, 9" x 4" Auger, Stainless Steel Unit, LH (or RH) Discharge, Berm Chute, Single Poly Spinner Ass'y, Complete	\$6,799.00	\$6,799.00
1 9901718	- Sander Install & dual manifold RH & LH rear	\$1,361.00	\$1,361.00
1 9900814	- Sander Falls Stainless Steel (optional) salt shield	\$195.00	\$195.00
1 9901348	- Sander TMTE Exterior Bolt-On Sander/Tailgate Spill Plates, Stainless Steel, Mill Finish	\$1,057.00	\$1,057.00
1 9900851	- Valve System, Force Add-A-Fold MCV-ISO Valve 9 Functions, INSTALLED HOIST, PLOW LIFT, PLOW STERR, WING TOR, WING HREL, WING PUSH-BAR, SCRAPER, AUGER, SPINNER	\$16,586.00	\$16,586.00
1 9902497	- Control System Force ULTRA-4-6100 Commander control, Installed	\$14,720.00	\$14,720.00
1 9900874	- Filter Force IN-TANK mounted filter installed	\$459.00	\$459.00
1 9900882	- Reservoir TMTE Cabshield mt (stainless steel) w/intank filter provision, installed	\$4,641.00	\$4,641.00
1 9900888	- Pump Force FASD45L LS (6 ci) installed	\$6,015.00	\$6,015.00
1 9900871	- Switch TMTE BODY UP Installed (electric controls only)	\$258.00	\$258.00

--- Continued ---

Accepted by _____ Date _____

Price:
 Total Discounts:
 Net Cost:
 Freight
 Total:



TOWMASTER, 61381 US HWY 12, LITCHFIELD, MN 55355
 PH: 320-693-7900 FX: 320-693-7921 TF: 800-462-4517
 TOWMASTERTRUCK.COM

Prior approval from 7/5/2023

Reference No.
 QT 76944

**** QUOTATION ****

Ship To: HAM LAKE, CITY OF 15544 CENTRAL AVE NE HAM LAKE MN 55304 USA	Cust: 2916 MN 55304	Phone:	Bill To: HAM LAKE, CITY OF 15544 CENTRAL AVE NE HAM LAKE MN 55304	Phone:
---	---	---------------	---	---------------

ATTN: JOHN WITKOWSKI 763-434-9555

PO#	Salesman	Terms	Created	Last Revised	Appx Comp
	JOSH PAULSON	NET 30 DAYS	1/10/23	6/01/23	1/15/22

Serial No.	Description	Price	Appx Comp
1 9900884	Sensor Force Low oil indicator system, SLIM-LINE AND CABSHIELD MOUNTED w/light mounted in cab, installed	\$317.00	\$317.00
1 9905014	Hydraulic Valve Hose Guard installed	\$389.00	\$389.00
1 9901112	ICC BUMPER	\$232.00	\$232.00
1 9901113	INSTALLATION OF ICC BUMPER	\$315.00	\$315.00
**NOTE: MUST BE BOLT-ON ATTACHMENT TO TRUCK FRAME FOR EASE OF REMOVAL IF NECESSARY FOR PAVING (SEE 2021 BUILD FOR REFERENCE)			
1	WARRANTY - TOWMASTER EXCLUSIVE WARRANTY: 5 yr Steel/Stainless Steel Body Structure; 5 yr Whelen LED Light Systems; 3 yr Palfinger Hoists; 4 yr SwapLoader Hoists; 1 year Swenson Spreaders, 2 yr Hyd, FALLS Snow Equip, Tele Hoists, and all other items.		

Accepted by	Date	Price:	\$173,588.00
		Total Discounts:	
		Net Cost:	\$173,588.00
		Freight	
		Total:	\$173,588.00

VOLVO PRICING

Print Date & Time 1/15/2025 8:50

SINGLE AXLE CAB/CHASSIS

Exhibit D: Price Schedule

VENDOR NAME Nuss Truck and Equipment

MAKE AND MODEL 2026 Volvo VHD 42F300 SA

This section for use when ordering	
WB	165"
CA	99" (Towmaster to Verify)
AF	63"
Rear Ratio	4.30
Cab Color	Vermillion Red (B9790)
Wheel Color	White Steel
Notes	City of Ham Lake
Grand Total \$ 155,624.76	
1.2.25(NUSS20250000015634D)	

Code	Spec #	Description	Qty	2025 Price	Subtotal
VHD64F300	1.0	Price for Base Unit:	1	\$ 115,726.00	\$ 115,726.00

2.0 FRAME OPTIONS

x4XB1X	2.1	Front frame extension	1	\$ 143.00	\$ 143.00
x2345	2.2	Custom hole punching in frame		\$ 110.00	\$ -
994DX	2.3	Deduct for no front bumper		\$ (60.00)	\$ -
403003	2.4	Frame fastener option (bolt or huck spun)	1	STD	
	2.5	Frame, R.B.M., S.M., PSI, CT			\$ -
403005	2.6	11.81"x3.54"x.31", R.B.M. 2,112,000, S.M. 17.6, PSI,120,000 CT		STD	
403006	2.7	11.81"x3.54"x.38", R.B.M. 2,460,000, S.M. 20.5, PSI,120,000 CT		\$ 343.00	\$ -
403010	2.8	11.81"x3.54"x.44", R.B.M. 2,820,000, S.M. 23.5, PSI,120,000 CT	1	\$ 562.00	\$ 562.00
403011	2.9	11.81"x4.13"x.44", R.B.M. 3,156,000, S.M. 26.3, PSI,120,000 CT		\$ 720.00	\$ -

3.0 FRONT AXLE/SUSPENSION/BRAKE/OPTION

MC	3.1	Set Back Front Axle Option	1	STD	
370403	3.2	14,600 front axle and matching suspension		STD	
370405	3.3	16,500 front axle and matching suspension		\$ 875.00	\$ -
370406	3.4	18,800 front axle & matching suspension		\$ 978.00	\$ -
370407	3.5	20,800 front axle and matching suspension	1	\$ 1,079.00	\$ 1,079.00
370408	3.6	22,800 front axle and matching suspension Volvo F22		\$ 1,154.00	\$ -
371071	3.7	Heavy duty front axle shocks	1	\$ 50.00	\$ 50.00
782014	3.8	Front Brake Dimension 16.5x6		\$ 67.00	\$ -
0KXG1X	3.9	Hubs Front axle iron unitized front axle hubs	1	\$ 25.00	\$ 25.00
NA	3.10	Right hand air bag suspension per Spec 3.7, Driver controlled		No Bid	
NA	3.11	Left air bag suspension per Spec 3.7, Driver controlled		No Bid	
ZGXE1X	3.12	Front axle lubrication cap with slotted venthole		No Bid	
UDXA1X	3.13	Front brake dust shields	1	STD	
XEXB1X	3.14	Dual front auxiliary steering gear	1	\$ 1,464.00	\$ 1,464.00
0371074	3.15	Multi Leaf Front Susp (RH Stiffner)		\$ 91.00	\$ -
XEXA1X	3.16	Right Hand Ram Assist		\$ 1,230.00	\$ -

4.0 4.0 TANDEM REAR AXLE/SUSPENSION/BRAKE/OPTIONS

N/A	4.1	17,500# driver differential locking rear axle and matching suspension		No Bid	
N/A	4.2	19,000# rear axle & matching suspension		No Bid	
N/A	4.3	19,000# driver differential locking rear axle and matching suspension		No Bid	
N/A	4.4	21,000# rear axle and matching suspension		No Bid	
N/A	4.5	21,000# driver differential locking rear axle and matching suspension		No Bid	
N/A	4.6	22,000# rear axle and matching suspension		No Bid	

VOLVO PRICING

N/A	4.7	22,000# driver differential locking rear axle and matching suspension		No Bid	
TUXA1X	4.8	23,000# rear axle and matching suspension Mertior RS23-160 Rear Axle & 23,000 Multi-Leaf Rear Suspension		STD	
TUXA2X	4.9	23,000# driver differential locking rear axle and matching suspension Mertior RS23-160 Rear Axle & 23,000 Multi-Leaf Rear Suspension		\$ 406.00	\$ -
TUXA3X	4.10	26,000# rear axle and matching suspension Mertior RS26-160 Rear Axle & 26,000 Multi-Leaf Rear Suspension		\$ 3,607.00	\$ -
TUXA4X	4.11	26,000# driver differential locking rear axle and matching suspension Mertior RS26-160 Rear Axle & 26,000 Multi-Leaf Rear Suspension		\$ 4,013.00	\$ -
330328	4.12	Meritor RS23160 rear axle and 26,000# rear suspension, driver diff. lock.		\$ 838.00	\$ -
N/A	4.13	17,500# air suspension in lieu of springs		No Bid	
N/A	4.14	19,000# air suspension in lieu of springs		No Bid	
N/A	4.15	21,000# air suspension in lieu of springs		No Bid	
N/A	4.16	22,000# air suspension in lieu of springs		No Bid	
350315	4.17	23,000# air suspension in lieu of springs		\$ 896.00	\$ -
3ZZ316	4.18	26,000# air suspension in lieu of springs		\$ 2,450.00	\$ -
ZAX99X	4.19	Dash mounted air dump system		\$ 14.00	\$ -
76AB1X	4.20	½ round universal joints	1	STD	
THXC2X	4.21	Spicer 1810 HD drive line with half round universal joints		\$ 230.00	\$ -
YVXZ1X	4.22	Rear axle heavy duty shocks		\$ 310.00	\$ -
350006	4.23	Rear auxiliary spring, 4500#		\$ 349.00	\$ -
N/A	4.24	Rear stabilizer bar		No Bid	
UEXA1X	4.25	Rear brake dust shield	1	\$ 22.00	\$ 22.00
784013	4.27	Meritor Brake Adjuster Front and Rear		\$ 11.00	\$ -
UKXB1X	4.28	Extended length brake stroke		\$ 54.00	\$ -
781104	4.29	Four Cam type haldex life seal plus		\$ 107.00	\$ -
7WXB1X	4.30	Synthetic Rear Axle Lubricant	1	\$ 117.00	\$ 117.00
yVXA1X	4.31	Rear Shock Absorbers	1	\$ 176.00	\$ 176.00
MC	4.31	Meritor RS-23-160 rear axle and 30,000# rear suspension, driver diff. lock.		\$ 1,087.00	\$ -
252AB1	4.27	Meritor RS-30-185 30,000 lbs rear axle	1	\$ 3,973.00	\$ 3,973.00
330328	4.12	30,000# multileaf rear suspension	1	\$ 838.00	\$ 838.00

5.0 FIFTH WHEEL OPTIONS

X6XA2X	5.1	Frame end tapered and open		\$ 12.00	\$ -
X6XB2X	5.2	Frame end tapered and closed		\$ 30.00	\$ -
330AB7	5.3	Fixed fifth wheel - Holland FW-35		\$ 684.00	\$ -
330AE7	5.4	Mechanical slide fifth wheel - Holland FW35, Travel - 24" slide		\$ 562.00	\$ -
330AH4	5.5	Air slide fifth wheel - Holland FW35, Travel - 24" slide		\$ 986.00	\$ -
464AA5	5.6	Stainless 1/4 fenders, mounted front of tandems		\$ 127.00	\$ -
464AA2	5.7	Plastic 1/4 fenders, mounted front of tandems		\$ 110.00	\$ -
WHX01X	5.8	Tractor package hookup		\$ 297.00	\$ -
7KXA3X	5.9	Behind cab deck plate		\$ 681.00	\$ -
330AB8	5.10	Holland fixed with non-tilt 5th wheel		\$ 1,385.00	\$ -
330AEF	5.11	Holland manual slide 5th wheel		\$ 537.00	\$ -
69XD3X	5.12	Mud flaps with brackets		\$ 115.00	\$ -
69XC3X	5.13	Betts B60 stainless steel angled mud flap brackets		\$ 161.00	\$ -
51XD1X	5.14	Hose fender & towel bar assembly		\$ 58.00	\$ -
5ZXB1X	5.15	Coiled trailer air hose		\$ 39.00	\$ -
2UAB1X	5.16	Coiled trailer electrical hose		\$ 44.00	\$ -
OBS04S	5.17	Air Weight AW5800 onboard scales		\$ 1,118.00	\$ -
6HXBRX	5.18	Medium height 5th wheel ramp guide		\$ 228.00	\$ -
322022	5.19	Trailer hook up light		\$ 74.00	\$ -

6.0 TIRES/RIMS OPTIONS:

NA	6.1	Nylon wafers or wheel guards on all wheels (10 ea)	1	\$ 44.00	\$ 44.00
----	-----	--	---	----------	----------

VOLVO PRICING

NA	6.2	Heavier 7500 lb 22.5 x 8.25 Steel rims in lieu of standard 7300# rims (10 ea)		STD	
084441	6.3	22.5 12.5 Black Powder quoted wheels front and back	\$ 482.00	\$ -	
NA	6.4	Heavier 7500 lb 22.5 x 8.25 Steel rims in lieu of standard 7300# rims (8 ea) in rear only	\$ (16.00)	\$ -	
		Front Tire Package		\$ -	
093760	6.5	11R22.5H GOODYEAR G731 MSA (13220 LBS. GAWR) MULTI USAGE	\$ 288.00	\$ -	
093762	6.6	11R22.5H GOODYEAR G751 MSA (13220 LBS. GAWR) MULTI USAGE	\$ 258.00	\$ -	
093299	6.7	11R24.5H BRIDGESTONE M863 (14320 LBS. GAWR) ON/OFF ROAD USAGE	\$ 2,240.00	\$ -	
093562	6.8	11R24.5H BRIDGESTONE R250ED (14320 LBS. GAWR) REGIONAL / URBAN USAGE	\$ (85.00)	\$ -	
093741	6.9	11R24.5H BRIDGESTONE R268 (14320 LBS. GAWR) REGIONAL / URBAN USAGE	\$ (75.00)	\$ -	
093796	6.10	11R24.5H BRIDGESTONE R283A ECOPIA (14320 LBS. GAWR) LONG / REGIONAL HAUL	\$ (85.00)	\$ -	
093761	6.11	11R24.5H GOODYEAR G731 MSA (14320 LBS. GAWR) MULTI USAGE	\$ 380.00	\$ -	
093763	6.12	11R24.5H GOODYEAR G751 MSA (14320 LBS. GAWR) MULTI USAGE	\$ 335.00	\$ -	
093591	6.13	11R24.5H MICHELIN XZE2 (14320 LBS. GAWR) REGIONAL / URBAN USAGE	\$ 1,648.00	\$ -	
093804	6.14	11R24.5H MICHELIN X WORKS Z (14320 LBS. GAWR) ON/OFF ROAD USAGE	\$ 100.00	\$ -	
093764	6.15	12R22.5H GOODYEAR G751 MSA (14780 LBS. GAWR) MULTI USAGE	\$ 468.00	\$ -	
093805	6.16	12R24.5H MICHELIN X WORKS Z (15660 LBS. GAWR) ON/OFF ROAD USAGE	\$ 210.00	\$ -	
093790	6.17	275/80R22.5H MICHELIN X LINE ENERGY Z (14320 LBS. GAWR) LONG / REGIONAL HAUL	\$ (40.00)	\$ -	
093758	6.18	315/80R22.5L GOODYEAR G751 MSA (18180 LBS. GAWR) MULTI USAGE	\$ 675.00	\$ -	
093828	6.19	315/80R22.5L MICHELIN X LINE ENERGY Z (18180 LBS. GAWR) LONG HAUL	\$ 95.00	\$ -	
093806	6.20	315/80R22.5L MICHELIN X WORKS Z (18180 LBS. GAWR) ON/OFF ROAD USAGE	\$ 235.00	\$ -	
093672	6.21	315/80R22.5L MICHELIN XZUS2 (20000 LBS. GAWR) URBAN USAGE	1 \$ 245.00	\$ 245.00	
093823	6.22	315/80R22.5L CONTINENTAL CITY SERVICE HA3 (20000 LBS. GAWR) URBAN USAGE	\$ 450.00	\$ -	
093747	6.23	385/65R22.5J BRIDGESTONE M854 (18740 LBS. GAWR) ON/OFF ROAD USAGE	\$ 200.00	\$ -	
093495	6.24	385/65R22.5J MICHELIN XZY3 (18740 LBS. GAWR) ON/OFF ROAD USAGE	\$ 265.00	\$ -	
093567	6.25	385/65R22.5L MICHELIN XFE (19840 LBS. GAWR) ON/OFF ROAD USAGE	\$ 335.00	\$ -	
		Rear Tire Package		\$ -	
094673	6.26	11R22.5G BRIDGESTONE M770 (23360 LBS. GAWR) LONG / REGIONAL HAUL	\$ 225.00	\$ -	
094810	6.27	11R22.5G BRIDGESTONE M726 EL A (21660 LBS. GAWR) LONG / REGIONAL HAUL	\$ 135.00	\$ -	
094297	6.28	11R22.5G BRIDGESTONE M843 (23360 LBS. GAWR) ON/OFF ROAD USAGE	\$ 690.00	\$ -	
094736	6.29	11R22.5G BRIDGESTONE R268 (23360 LBS. GAWR) REGIONAL HAUL	STD		
094821	6.30	11R22.5G CONTINENTAL HDL2 (22700 LBS. GAWR) LONG HAUL	\$ 595.00	\$ -	
094701	6.31	11R22.5G MICHELIN X LINE ENERGY D (23360 LBS. GAWR) LONG / REGIONAL HAUL	\$ 1,085.00	\$ -	
094350	6.32	11R22.5G MICHELIN XDN2 (23360 LBS. GAWR) LONG / REGIONAL HAUL	1 \$ 930.00	\$ 930.00	

VOLVO PRICING

094788	6.33	11R22.5G MICHELIN X LINE ENERGY Z (23360 LBS. GAWR) LONG / REGIONAL HAUL	\$ 835.00	\$ -
094588	6.34	11R22.5G MICHELIN XZE2 (23360 LBS. GAWR) REGIONAL / URBAN USAGE	\$ 635.00	\$ -
094692	6.35	11R22.5G MICHELIN X MULTI ENERGY D (23360 LBS. GAWR) REGIONAL HAUL	\$ 965.00	\$ -
094674	6.36	11R22.5H BRIDGESTONE M770 (24020 LBS. GAWR) LONG / REGIONAL HAUL	\$ 465.00	\$ -
094559	6.37	11R22.5H BRIDGESTONE M775 (24020 LBS. GAWR) ON/OFF ROAD USAGE	\$ 889.00	\$ -
094311	6.38	11R22.5H BRIDGESTONE M843 (24020 LBS. GAWR) ON/OFF ROAD USAGE	\$ 915.00	\$ -
094738	6.39	11R22.5H BRIDGESTONE R268 (24020 LBS. GAWR) REGIONAL / URBAN USAGE	\$ 465.00	\$ -
094688	6.40	11R22.5H BRIDGESTONE M799 (24020 LBS. GAWR) ON/OFF ROAD USAGE	\$ 565.00	\$ -
094760	6.41	11R22.5H GOODYEAR G731 MSA (24020 LBS. GAWR) MULTI USAGE	\$ 2,470.00	\$ -
094762	6.42	11R22.5H GOODYEAR G751 MSA (24020 LBS. GAWR) MULTI USAGE	\$ 2,355.00	\$ -
094351	6.43	11R22.5H MICHELIN XDN2 (24020 LBS. GAWR) LONG / REGIONAL HAUL	\$ 1,015.00	\$ -
094652	6.44	11R22.5H MICHELIN XDS2 (24020 LBS. GAWR) LONG / REGIONAL HAUL	\$ 1,485.00	\$ -
094789	6.45	11R22.5H MICHELIN X LINE ENERGY Z (24020 LBS. GAWR) LONG / REGIONAL HAUL	\$ 955.00	\$ -
094801	6.46	11R22.5H MICHELIN X WORKS Z (24020 LBS. GAWR) ON/OFF ROAD USAGE	\$ 1,345.00	\$ -
094686	6.47	11R22.5H MICHELIN X WORKS XDY (24020 LBS. GAWR) ON/OFF ROAD USAGE	\$ 1,485.00	\$ -
094677	6.48	11R24.5G BRIDGESTONE M770 (24020 LBS. GAWR) LONG / REGIONAL HAUL	\$ 500.00	\$ -
094811	6.49	11R24.5G BRIDGESTONE M726 EL A (22700 LBS. GAWR) LONG / REGIONAL HAUL	\$ 250.00	\$ -
094739	6.50	11R24.5G BRIDGESTONE R268 (24020 LBS. GAWR) REGIONAL / URBAN USAGE	\$ 400.00	\$ -
094361	6.51	11R24.5G MICHELIN XDN2 (24020 LBS. GAWR) LONG / REGIONAL HAUL	\$ 1,185.00	\$ -
094557	6.52	11R24.5H BRIDGESTONE L320 (26440 LBS. GAWR) ON/OFF ROAD USAGE	\$ 1,315.00	\$ -
094558	6.53	11R24.5H BRIDGESTONE M775 (26440 LBS. GAWR) ON/OFF ROAD USAGE	\$ 1,525.00	\$ -
094299	6.54	11R24.5H BRIDGESTONE M843 (26440 LBS. GAWR) ON/OFF ROAD USAGE	\$ 1,185.00	\$ -
094741	6.55	11R24.5H BRIDGESTONE R268 (26440 LBS. GAWR) REGIONAL / URBAN USAGE	\$ 685.00	\$ -
094689	6.56	11R24.5H BRIDGESTONE M799 (26440 LBS. GAWR) ON/OFF ROAD USAGE	\$ 685.00	\$ -
094761	6.57	11R24.5H GOODYEAR G731 MSA (26440 LBS. GAWR) MULTI USAGE	\$ 2,845.00	\$ -
094763	6.58	11R24.5H GOODYEAR G751 MSA (26440 LBS. GAWR) MULTI USAGE	\$ 2,655.00	\$ -
094659	6.59	11R24.5H MICHELIN XDS2 (26440 LBS. GAWR) LONG / REGIONAL HAUL	\$ 1,460.00	\$ -
094804	6.60	11R24.5H MICHELIN X WORKS Z (26440 LBS. GAWR) ON/OFF ROAD USAGE	\$ 1,680.00	\$ -
094671	6.61	11R24.5H MICHELIN X WORKS XDY (26440 LBS. GAWR) LIGHT CONSTRUCTION	\$ 1,795.00	\$ -
094560	6.62	12R22.5H BRIDGESTONE M775 (27120 LBS. GAWR) ON/OFF ROAD USAGE	\$ 1,690.00	\$ -
094690	6.63	12R22.5H BRIDGESTONE M799 (27120 LBS. GAWR) ON/OFF ROAD USAGE	\$ 1,825.00	\$ -
094764	6.64	12R22.5H GOODYEAR G751 MSA (27120 LBS. GAWR) MULTI USAGE	\$ 3,195.00	\$ -

VOLVO PRICING

094314	6.65	12R24.5H BRIDGESTONE M843 (28640 LBS. GAWR) ON/OFF ROAD USAGE		\$ 1,465.00	\$ -
094330	6.66	275/80R22.5G MICHELIN XDA ENERGY (22700 LBS. GAWR) LONG / REGIONAL HAUL		\$ 895.00	\$ -
094700	6.67	275/80R22.5G MICHELIN X LINE ENERGY D (22700 LBS. GAWR) LONG / REGIONAL HAUL		\$ 855.00	\$ -
094698	6.68	275/80R22.5G MICHELIN XDA5+ (22700 LBS. GAWR) LONG / REGIONAL HAUL		\$ 665.00	\$ -
094354	6.69	275/80R22.5G MICHELIN XDN2 (22700 LBS. GAWR) LONG / REGIONAL HAUL		\$ 750.00	\$ -
094787	6.70	275/80R22.5G MICHELIN X LINE ENERGY Z (22700 LBS. GAWR) LONG / REGIONAL HAUL		\$ 715.00	\$ -
094694	6.71	275/80R22.5G MICHELIN X MULTI ENERGY D (22700 LBS. GAWR) REGIONAL HAUL		\$ 1,050.00	\$ -
094592	6.72	275/80R22.5G MICHELIN XZE2 (22700 LBS. GAWR) REGIONAL / URBAN USAGE		\$ 545.00	\$ -
094790	6.73	275/80R22.5H MICHELIN X LINE ENERGY Z (26440 LBS. GAWR) LONG / REGIONAL HAUL		\$ 875.00	\$ -
094699	6.74	275/80R24.5G MICHELIN XDA5+ (22700 LBS. GAWR) LONG / REGIONAL HAUL		\$ 600.00	\$ -
094490	6.75	275/80R24.5G MICHELIN XDN2 (22700 LBS. GAWR) LONG / REGIONAL HAUL		\$ 800.00	\$ -
094791	6.76	275/80R24.5G MICHELIN X LINE ENERGY Z (22700 LBS. GAWR) LONG / REGIONAL HAUL		\$ 750.00	\$ -
094809	6.77	285/75R24.5G BRIDGESTONE M726 EL A (20820 LBS. GAWR) LONG / REGIONAL HAUL		\$ 230.00	\$ -
094676	6.78	285/75R24.5G BRIDGESTONE M770 (22700 LBS. GAWR) LONG / REGIONAL HAUL		\$ 285.00	\$ -
094808	6.79	295/75R22.5G BRIDGESTONE M726 EL A (20280 LBS. GAWR) LONG / REGIONAL HAUL		\$ 75.00	\$ -
094725	6.80	295/75R22.5G BRIDGESTONE R268 (22700 LBS. GAWR) REGIONAL HAUL		\$ 95.00	\$ -
094767	6.81	295/75R22.5G CONTINENTAL HDR2 (22700 LBS. GAWR) REGIONAL HAUL		\$ 155.00	\$ -
NUS225	6.82	Steel spare rim, size		No Bid	
NUS245	6.83	Steel spare rim, size		No Bid	

7.0 BRAKE SYSTEM OPTIONS:

VHXBVX	7.1	Wabco System Saver 1200 Plus heated air dryer	1	STD	
UWXB1X	7.2	Manual cable drain valves on air tanks		\$ 27.00	\$ -
N/A	7.3	Heated air tank		No Bid	
UWXE3X	7.4	Auto drain valves on air tanks, heated	1	\$ 48.00	\$ 48.00
300AD0	7.5	MGM type TR-T rear brake chambers		\$ 48.00	\$ -
N/A	7.6	S.S. pins on slack adjuster yoke (2 ea. per yoke) For all air brake chambers		No Bid	
N5FAJX	7.7	Inverted rear brake chamber mounting in lieu of regular mounting		No Bid	
MC	7.8	Relocate air dryer		\$ 272.00	\$ -

8.0 ENGINE/EXHAUST AND FUEL TANKS OPTIONS:

(List Make & Model, H.P., torque of engine and exhaust and fuel tank options)

1017V0	8.1	VOLVO D11 325HP 2100RPM 1250 LBFT	1	STD	
1017V1	8.2	VOLVO D11 355HP 2100RPM 1250 LBFT		\$ 1,230.00	\$ -
1017V2	8.3	VOLVO D11 365HP 2100RPM 1350 LBFT		\$ 1,675.00	\$ -
1017V3	8.4	VOLVO D11 385HP 2100RPM 1450 LBFT		\$ 2,413.00	\$ -
1017V5	8.5	VOLVO D11 425HP 2100RPM 1550 LBFT	1	\$ 3,971.00	\$ 3,971.00
1017V4	8.6	VOLVO D11 385HP 2100RPM 1450/1250 LBFT ECO-TORQUE PERF		\$ 2,413.00	\$ -
1017V6	8.7	VOLVO D11 425HP 2100RPM 1550/1350 LBFT ECO-TORQUE PERF		\$ 3,971.00	\$ -
1017W0	8.8	VOLVO D13 375HP 2100RPM 1450 LBFT		\$ 2,229.00	\$ -
1017W1	8.9	VOLVO D13 405HP 2100RPM 1450 LBFT		\$ 3,283.00	\$ -

VOLVO PRICING

1017W8	8.10	VOLVO D13 425HP 2100RPM 1550 LBFT		\$ 4,432.00	\$ -
1017X7	8.11	VOLVO D13 435HP 2100RPM 1650 LBFT		\$ 4,994.00	\$ -
1017X8	8.12	VOLVO D13 455HP 2100RPM 1750 LBFT		\$ 5,649.00	\$ -
1017Y7	8.13	VOLVO D13 500HP 2100RPM 1850 LBFT		\$ 7,129.00	\$ -
1017W2	8.14	VOLVO D13 405HP 2100RPM 1450/1650 LBFT DUAL-TORQUE		\$ 3,588.00	\$ -
1017W9	8.15	VOLVO D13 425HP 2100RPM 1450/1750 LBFT DUAL-TORQUE		\$ 4,736.00	\$ -
1017X9	8.16	VOLVO D13 455HP 2100RPM 1550/1850 LBFT DUAL-TORQUE		\$ 6,000.00	\$ -
1017W3	8.17	VOLVO D13 405HP 2100RPM 1650/1450 LBFT ECO-TORQUE PERF.		\$ 3,588.00	\$ -
1017W4	8.18	ECON.		\$ 3,588.00	\$ -
1017X0	8.19	VOLVO D13 425HP 2100RPM 1750/1450 LBFT ECO-TORQUE PERF.		\$ 4,736.00	\$ -
1017X1	8.20	VOLVO D13 425HP 2100RPM 1750/1450 LBFT ECO-TORQUE ECON		\$ 4,736.00	\$ -
	8.21	VOLVO D13 455HP 2100RPM 1850/1550 LBFT ECO-TORQUE PERFORMANCE		\$ 6,000.00	\$ -
1017Y0					
1017Y1	8.22	VOLVO D13 455HP 2100RPM 1850/1550 LBFT ECO-TORQUE ECON		\$ 6,000.00	\$ -
1017Y8	8.23	VOLVO D13 500HP 2100RPM 1850/1550 LBFT ECO-TORQUE PERF.		\$ 7,129.00	\$ -
232088	8.24	10' 0" ALUMINIZED STAINLESS VERTICAL STEEL SINGLE STACK	1	STD	
K0XC1X	8.25	STRAIGHT END EXHAUST STACK		\$ 45.00	\$ -
K0XD1X	8.26	TURNED OUT EXHAUST EXTENSION integrated DPF and SCR		\$ 979.00	\$ -
K0XC4X	8.27	STRAIGHT STACK, SIDE OUTLET DIFFUSER BOX	1	STD	
K0XC5X	8.28	STRAIGHT STACK, TOP OUTLET DIFFUSER BOX		\$ 45.00	\$ -
J8XATX	8.29	50 GALLON LEFT HAND FUEL TANK		\$ 132.00	\$ -
J8XBXX	8.30	70 GALLON LEFT HAND FUEL TANK		\$ 132.00	\$ -
J8XB1X	8.31	75 GALLON LEFT HAND FUEL TANK STANDARD	1	STD	
J8XEJX	8.32	90 GALLON LEFT HAND FUEL TANK		\$ 560.00	\$ -
J8XEWX	8.33	100 GALLON LEFT HAND FUEL TANK		\$ 137.00	\$ -
J8XG1X	8.34	125 GALLON LEFT HAND FUEL TANK		\$ 301.00	\$ -
JBZZ1234		22" DIA D SHAPED FUEL TANK **Required for CBOC** air tanks			
	8.35	needs moved	1	\$ 601.00	\$ 601.00
KNXB2X	8.36	26" DIA D SHAPED FUEL TANK		\$ 186.00	\$ -

9.0 ENGINE RELATED OPTIONS:

26X1XZ	9.1	Oil fill and dipstick EZ access		\$ 319.00	\$ -
PJXMGX	9.2	Delco 35 SI Brushless Alternator, 135 AMP		\$ (44.00)	\$ -
NA	9.3	Delco 24 SI Alternator, 130 AMP	1	STD	
PJXMLX	9.4	Delco 24 SI Alternator, 145 AMP		\$ (50.00)	\$ -
PJXMIX	9.5	Leece-Neville Alternator, 145 AMP		\$ (35.00)	\$ -
810113	9.6	3 Volvo 760 CCA Maintenance Free 12V Batteries 2280 CCA		\$ 80.00	\$ -
KWXA3X	9.7	Dual element air cleaner		\$ 66.00	\$ -
KWXA1A	9.8	Donaldson Single Stage Air cleaner per spec 12.1	1	\$ 32.00	\$ 32.00
JVXDAX	9.9	Davco 382 fuel/water separator heated		\$ 196.00	\$ -
JVXBBX	9.10	Non-heated fuel/water separator, _____RACOR 6903E_(Brand)		\$ 42.00	\$ -
H9XK1X	9.11	Coolant spin on filter/conditioner	1	\$ 67.00	\$ 67.00
T1XA1X	9.12	Front engine powered take off adapter and radiator cut out	1	\$ 540.00	\$ 540.00
208021	9.13	Air applied fan drive, _____KYSOR_(Brand)		\$ 329.00	\$ -
208025	9.14	Viscous fan drive	1	\$ 29.00	\$ 29.00
KOXD1X	9.15	Curved exhaust pipe end		\$ 24.00	\$ -
5NXAVX	9.16	Engine block heater	1	\$ 60.00	\$ 60.00
NA	9.17	In line fuel heater		No Bid	
JRXA1X	9.18	In tank fuel heater		\$ 388.00	\$ -
NA	9.19	Fuel cooler		No Bid	
NA	9.20	Radiator bug screen	1	STD	
LCO01	9.21	Stainless Steel Oil Pan	1	\$ 1,900.00	\$ 1,900.00
HTXA8X	9.22	Engine brake system	1	\$ 950.00	\$ 950.00
VHXZZX	9.23	Relocate air dryer		\$ 243.00	\$ -
K9XO9X	9.24	Extended life anti-freeze	1	\$ 126.00	\$ 126.00
UBXM1X	9.25	ENGINE MOUNTED HYDRAULIC PUMP PARKER F2-42/42		\$ 2,724.00	\$ -
UBXD1X	9.26	ENGINE MOUNTED HYDRAULIC PUMP PARKER F1-81		\$ 1,969.00	\$ -

VOLVO PRICING

UBXC1X	9.27	ENGINE MOUNTED HYDRAULIC PUMP PARKER F1-61		\$ 1,881.00	\$ -
T1XK1X	9.28	REAR ENGINE MOUNTED PTO WITH SPLINED SHAFT GROOVE FEMALE DIN 5462		\$ 349.00	\$ -
NCXD1X	9.29	VOLVO 12 V GEAR REDUCTION STARTER (MODEL 105P55)		\$ 92.00	\$ -
JWXE1X	9.30	HOOD MOUNTED AIR INTAKE WITH INSIDE/OUTSIDE AIR IN CAB CONTROL SNOW DOOR	1	\$ 173.00	\$ 173.00
T1XA1X	9.31	REAR ENGINE POWER TAKE OFF WITH FLANGE SAE 1410		\$ 540.00	\$ -
NCXA5X	9.32	Starter motor options **DELCO REMY 12 39MTHD STARTER		\$ 98.00	\$ -
H9XK1X	9.33	1240 SQ IN RADIATOR 2 ROW CORE	1	\$ 225.00	\$ 225.00

10.0 TRANSMISSION OPTIONS:

(After the first Six listed options, list manual and automatic transmission options. List make and model, # of speeds, type of shifting and whether or not transmission includes PTO gear(s) or not). Example: Allison 3000 HS, 5 speed, push button, no PTO.

NA	10.1	2 plate 14" ceramic clutch option for manual transmission		No Bid	
250090	10.2	2 plate 15½" ceramic clutch option for manual transmission		No Bid	
RBXA1A	10.3	External grease fitting for throw out bearing		\$ 103.00	\$ -
NA	10.4	Adjustment free option for 2 plate clutches		STD	
NA	10.5	Synthetic (TranSynd) lubrication for Automatic Transmission	1	\$ 145.00	\$ 145.00
Loc002	10.6	Stainless Steel Transmission cooler lines	1	\$ 1,950.00	\$ 1,950.00
NA	10.7	Synthetic lubrication for Manual Transmission		STD	

***** VOLVO AUTOMATED MANUAL TRANSMISSIONS

270707	10.8	VOLVO I-SHIFT FOR SEVERE DUTY, AT2612F DIRECT DRIVE, 12 SPEED		\$ 2,344.00	\$ -
270708	110.9	VOLVO I-SHIFT FOR SEVERE DUTY, ATO2612F, 12 SPEED		\$ 2,344.00	\$ -
270711	10.10	VOLVO I-SHIFT WITH CRAWLER, ATO2612F, 13 SPEED		\$ 4,566.00	\$ -
270714	10.11	VOLVO I-SHIFT WITH ULTRA-LOW CRAWLER, ATO2612F, 14 SPEED		\$ 4,566.00	\$ -

***** MANUAL TRANSMISSIONS

270721	10.12	EATON FULLER ADVANTAGE FAO15810C, 10 SPEED		\$ 989.00	\$ -
270722	10.13	EATON FULLER ADVANTAGE FAO16810C, 10 SPEED		\$ 1,103.00	\$ -
270733	10.17	EATON FULLER FRO-15210C, 10 SPEED		\$ (257.00)	\$ -
270734	10.18	EATON FULLER FRO-16210C, 10 SPEED		\$ 561.00	\$ -
270735	10.19	EATON FULLER FRO-17210C, 10 SPEED		\$ 899.00	\$ -
270737	10.21	EATON FULLER RTO-14908LL, 10 SPEED		\$ 1,262.00	\$ -
270738	10.22	EATON FULLER RTO-16908LL, 10 SPEED		\$ 1,358.00	\$ -
270739	10.23	EATON FULLER RTO-14909ALL, 11 SPEED		\$ 1,826.00	\$ -
270740	10.24	EATON FULLER RTO-16909ALL, 11 SPEED		\$ 1,928.00	\$ -
270743	10.25	EATON FULLER RTLO-16913A, 13 SPEED		\$ 1,239.00	\$ -
270744	10.26	EATON FULLER RTLO-18913A, 13 SPEED		\$ 1,755.00	\$ -
270747	10.27	EATON FULLER RTLO-16918B, 18 SPEED		\$ 1,826.00	\$ -
270748	10.28	EATON FULLER RTLO-18918B, 18 SPEED		\$ 1,826.00	\$ -

***** FULLY AUTOMATIC TRANSMISSIONS

270762	10.29	ALLISON 3000 RDS SERIES 5 SPEED WITH PTO PROVISION - SCAAN REQUIRED BEFORE ORDERING		\$3,113.00	\$ -
270765	10.30	ALLISON 4000 RDS SERIES 6 SPEED WITH PTO PROVISION - SCAAN REQUIRED BEFORE ORDERING		\$7,410.00	\$ -
270768	10.31	ALLISON 4500 RDS SERIES 5 SPEED WITH PTO PROVISION - SCAAN REQUIRED BEFORE ORDERING		\$7,586.00	\$ -
270769	10.32	ALLISON 4500 RDS SERIES 6 SPEED WITH PTO PROVISION - SCAAN REQUIRED BEFORE ORDERING	1	\$ 8,086.00	\$ 8,086.00
TKXB1X	10.34	UPGRADE DRIVELINE ONE SIZE		\$ 107.00	\$ -
TKXC1X	10.35	UPGRADE DRIVELINE TWO SIZES		\$ 127.00	\$ -
T4XAKX	10.36	REAR TRANSMISSION PTO, SAE 1310 FLANGE LOW SPEED		\$ 2,513.00	\$ -
T4XDMX	10.37	REAR TRANSMISSION PTO, DIN-CONNECTION PUMP MEDIUM SPEED		\$ 2,108.00	\$ -

VOLVO PRICING

T4XF1X	10.38	REAR TRANS PTO, HEAVY DUTY, SAE 1350 / 1410 FLANGE HIGH SPEED		\$ 2,053.00	\$ -
T4XH1X	10.39	REAR DOUBLE TRANS PTO, HEAVY DUTY, (1) SAE 1350 / 1410 FLANGE HIGH SPEED + (1) DIN-CONNECTION PUMP HIGH SPEED		\$ 2,399.00	\$ -
T4XJ1X	10.40	REAR TRIPLE TRANS PTO, HEAVY DUTY, (1) SAE 1310 FLANGE LOW SPEED + (1) SAE 1350/1410 FLANGE HIGH SPEED + (1) DIN-CONN. PUMP HIGH SPEED		\$ 3,184.00	\$ -
T4XG1X	10.41	REAR DOUBLE TRANS PTO, HEAVY DUTY, (2) DIN-CONN. PUMPS HIGH SPEED		\$ 1,864.00	\$ -
T4XD5X	10.42	TRANSMISSION PTO PREP ELECTRIC / AIR SOLENOID		\$ 25.00	\$ -
RVXH5X	10.43	GEAR SHIFT LEVER, PREMIUM, I-Shift		\$ 25.00	\$ -
RVXH4X	10.44	GEAR SHIFT LEVER, DASH MOUNTED, PREMIUM, VOLVO I-SHIFT		\$ 145.00	\$ -
INTER	10.45	Local Change to Allison Programming - Performance Mode		\$ 1,450.00	\$ -

11.0 ELECTRICAL OPTIONS:

NA	11.1	Resettable circuit breaker electrical protection		No Bid	
NA	11.2	Automatic reset circuit breakers		No Bid	
NA	11.3	Solid state circuit protection		No Bid	
L1XB1X	11.4	Circuit box under hood or end of frame, each		No Bid	
NFXD1X	11.5	Battery disconnect off negative side in cab control	1	\$ 10.00	\$ 10.00
NZZD1X	11.6	Remote jump start terminals		\$ 345.00	\$ -
5RXA1X	11.7	Back up alarm (Preco Factory Model)		\$ 23.00	\$ -
LSXG1X	11.8	OEM daytime running lights	1	STD	
NA	11.11	Battery box aft of cab		\$ 178.00	\$ -
NA	11.12	Grote 44710 flasher		No Bid	
NPXB1X	11.13	Signal Stat 935 turn signal per Spec 12.6	1	STD	
NZZACZ	11.14	Auxiliary customer access circuits	1	STD	
NJXAAX	11.15	Switch for snowplow lights mounted on instrumental panel. Includes wiring terminated near headlights, for customer mounted auxiliary snowplow lights.	1	\$ 78.00	\$ 78.00
NZZAAX	11.16	Power source terminal-2 stud type-mounted on firewall or inside cab with ground to frame rail and to starter, with 6 gauge wire.		\$ 76.00	\$ -
EAXABX	11.17	10-position switch panel mounted on instrument panel. Includes 10 lighted switches, ignition control; switches will control relays which will feed stud type junction block mounted inside cab.	1	\$ 663.00	\$ 663.00
NZZABZ	11.18	Vehicle speed sensor with speed signal at fuse panel for sander ground speed control system.	1	\$ 456.00	\$ 456.00

12.0 CAB EXTERIOR OPTIONS:

LZXD1X	12.2	Air horns, dual, round, with snow shields		\$ 165.00	\$ -
NA	12.3	Dual rectangular air horns	1	\$ 165.00	\$ 165.00
EDXB1X	12.4	Fender mirrors per Spec 12.4	1	\$ 68.00	\$ 68.00
3GXB1X	12.5	Heated mirrors per Spec 12.5	1	\$ 99.00	\$ 99.00
NA	12.6	Remote control for R.H. mirror		No Bid	
3GXC1X	12.7	Remote control for dual mirrors	1	\$ 167.00	\$ 167.00
NA	12.8	Upcharge for cab extension or larger cab		No Bid	
NA	12.9	Severe duty aluminum cab option		No Bid	
9801S0	12.10	Dupont Highway orange paint or equal		\$ 249.00	\$ -
955043	12.11	Premium paint color option		\$ 138.00	\$ -
955040	12.12	Imron paint option	1	STD	
955041	12.13	Imron and clear coat paint option		\$ 152.00	\$ -
9811C2	12.14	Top of hood painted flat black		\$ 467.00	\$ -
2DX30X	12.15	Cab Air Ride Suspension	1	STD	
28XC1X	12.16	Tilting hood per Spec 12.8	1	\$ 367.00	\$ 367.00
NA	12.17	Butterfly option on hood	1	\$ 378.00	\$ 378.00
NA	12.18	Transverse hood opening w/setback axle		No Bid	
NA	12.19	Front fender mounted turn signals		No Bid	
4NXZ1X	12.20	Cab visor, external, painted to match cab color	1	\$ 185.00	\$ 185.00

VOLVO PRICING

65XA1X	12.21	Front fender extensions	1	\$ 85.00	\$ 85.00
NA	12.22	Front fender mud flaps	1	\$ 22.00	\$ 22.00
D2XB1X	12.23	Arctic winter wiper blades	1	\$ 17.00	\$ 17.00
NA	12.24	Optional windshield washer tank		No Bid	
20XB1X	12.25	Per truck charge for all trucks, key identical		\$ 25.00	\$ -
NA	12.26	RH observation prism window in door		No Bid	
NA	12.27	Spotlight LH, RH, or roof mounted each		No Bid	
4EXB1X	12.28	Front tow hooks		\$ 231.00	\$ -
6PXB1X	12.29	Rear tow hooks		\$ 85.00	\$ -
3FX49X	12.30	BLACK AERODYNAMIC EXTERIOR MIRRORS		\$ 146.00	\$ -
EDXB7X	12.31	Heated fender mirrors	1	\$ 446.00	\$ 446.00
WTXA1X	12.32	HEATED WINDSHIELD	1	\$ 210.00	\$ 210.00

13.0 CAB INTERIOR OPTIONS:

540068	13.1	Medium grade interior trim package		\$ 110.00	\$ -
540070	13.2	Premium grade interior trim package	1	\$ 150.00	\$ 150.00
NA	13.3	Round universal gauge package	1	STD	
2XX30X	13.4	Power window, passenger side		\$ 81.00	\$ -
2XX35X	13.5	Power window/both passenger and driver window	1	\$ 150.00	\$ 150.00
MC	13.6	O.E.M factory installed, AM/FM	1	STD	
NA	13.7	O.E.M factory installed, air conditioning **STANDARD	1	STD	
NA	13.8	Cab mounted non-resettable hour meter **STANDARD	1	STD	
571018	13.9	Dash mounted air cleaner air restriction gauge	1	\$ 78.00	\$ 78.00
CCXB1X	13.10	Transmission temp gauges	1	\$ 79.00	\$ 79.00
NA	13.11	Windshield defroster fan w/switch dash mounted	1	STD	
NA	13.12	Between seats mounted console		\$ 16.00	\$ -
NA	13.13	Transmission oil sensor (check & fill)	1	STD	
5JXA1X	13.14	CB hot jacks dash mounted		\$ 26.00	\$ -
2WXA1X	13.15	Tilt & telescope steering wheel	1	\$ 190.00	\$ 190.00
2WZZ1X	13.16	Tilt steering wheel	1	STD	
2WXA1X	13.17	SRS DRIVER SIDE AIR BAG IN STEERING WHEEL		\$ 138.00	\$ -
WPXA1X	13.18	TRACTION CONTROL ADDED TO ABS	1	\$ 138.00	\$ 138.00
	13.19	Self canceling turn signals	1	STD	

List seating options for driver and passenger seats. Use as many options as you need to offer seat variations customers have been buying.

*****INTERIOR TRIM LEVELS

540066	13.22	X1 WREN VINYL TRIM PACKAGE		STD	
540068	13.23	X2 Raven Cloth TRIM PACKAGE		\$120.00	\$ -
540067	13.24	X3 WREN CLOTH WITH MIGRATION PATTERN		\$120.00	\$ -
540070	13.25	X4 RAVEN MORDURA CLOTH		\$195.00	\$ -
540069	13.26	X5 WREN VINYL / WREN CLOTH	1	\$ 195.00	\$ 195.00
540072	13.27	X7 WREN LEATHER		\$345.00	\$ -
540071	13.28	X6 WREN LEATHER / WREN CLOTH WITH ORANGE ACCENT		\$195.00	\$ -
		SEAT MANUFACTURER			\$ -
35XD1X	13.29	NATIONAL SEAT	1	STD	
35XB1X	13.30	BOSTROM SEAT		\$ 50.00	\$ -
35XH1X	13.31	SEARS SEAT		\$ 55.00	\$ -
	13.32	DRIVER SEAT TYPE			\$ -
3YXF2X	13.33	AIR SUSPENSION HIGH BACK		\$ 35.00	\$ -
3YXG8X	13.34	COMFORT AIR SUSPENSION HIGH BACK		\$ 69.00	\$ -
3YXG9X	13.35	COMFORT AIR SUSPENSION HIGH BACK, HEATED	1	\$ 112.00	\$ 112.00
3YXJ1X	13.36	COMFORT AIR SUSPENSION HIGH BACK WITH BACK CYCLER	1	\$ 25.00	\$ 25.00
		PASSENGER SEAT TYPE			\$ -
32X40X	13.38	STATIONARY SEAT WITH TOOL BOX	1	\$ 375.00	\$ 375.00

VOLVO PRICING

32XF3X	13.39	AIR SUSPENSION HIGH BACK		\$ 148.00	\$ -
32XG8X	13.40	COMFORT AIR SUSPENSION HIGH BACK		\$ 214.00	\$ -
32XG9X	13.41	COMFORT AIR SUSPENSION HIGH BACK, HEATED		\$ 228.00	\$ -
32XJ1X	13.42	COMFORT AIR SUSPENSION HIGH BACK WITH BACK CYCLER		\$ 368.00	\$ -
32X99X	13.42	NO PASSENGER SEAT PROVIDED		\$ (58.00)	\$ -
		SEAT ARMREST			\$ -
3PXZ1X	13.43	NO SEAT ARMREST PROVIDED		\$ (5.00)	\$ -
3PXA1X	13.43	INBOARD DRIVER SEAT ARMREST		\$ 19.00	\$ -
3PXA5X	13.43	INBOARD / OUTBOARD DRIVER SEAT ARMREST	1	\$ 38.00	\$ 38.00
3PXC1X	13.43	INBOARD DRIVER AND PASS SEAT ARMREST		\$ 38.00	\$ -
3PXC5X	13.43	INBOARD / OUTBOARD DRIVER AND PASSENGER SEAT ARMREST		\$ 76.00	\$ -
		SAFETY BELT LENGTH			\$ -
K7AA1X	13.44	STANDARD SAFETY BELT LENGTH	1	STD	
K7AC1X	13.45	EXTENDED SAFETY BELT LENGTH		\$ 50.00	\$ -
		SAFETY BELT DRIVER SEAT			\$ -
OUXA1X	13.46	SAFETY BELT DRIVER SEAT, BLACK	1	STD	
OUXC1X	13.47	SAFETY BELT DRIVER SEAT, ORANGE		\$ 8.00	\$ -
OUXD1X	13.48	SAFETY BELT DRIVER SEAT, LIME GREEN		\$ 10.00	\$ -
		SAFETY BELT PASSENGER SEAT			\$ -
OXXA1X	13.49	SAFETY BELT PASSENGER SEAT, BLACK	1	STD	
OXXA2X	13.50	SAFETY BELT PASSENGER SEAT, ORANGE		\$ 8.00	
OXXA7X	13.51	SAFETY BELT PASSENGER SEAT, LIME GREEN		\$ 10.00	

14.0 MN/DOT OPTIONS:

	14.1	Additional warranty coverage per spec 12.9			
M510Z1	14.2	Engine Plan 2 60 months 250,000 miles	1	\$ 2,910.00	\$ 2,910.00
M51131	14.3	Engine Plan 2 72 months 250,000 miles		\$ 4,690.00	\$ -
M51141	14.4	Engine Plan 2 84 months 250,000 miles		\$ 6,270.00	\$ -
M511B1	14.5	Engine Plan 2 60 months 250,000 miles - HP over 460 horses		\$ 4,308.00	\$ -
M511F1	14.6	Engine Plan 2 72 months 250,000 miles - HP over 460 horses		\$ 6,961.00	\$ -
511G1	14.7	Engine Plan 2 84 months 250,000 miles - HP over 460 horses		\$ 9,414.00	\$ -
M53083	14.8	Engine after-treatment systems (EATS) 60 months 250,000 miles	1	\$ 942.00	\$ 942.00
M530Y3	14.9	Engine after-treatment systems (EATS) 72 months 250,000 miles		\$ 1,708.00	\$ -
M531O3	14.10	Engine after-treatment systems (EATS) 84 months 250,000 miles		\$ 2,274.00	\$ -
M53083	14.11	Engine after-treatment systems (EATS) 60 months 250,000 miles - HP over 460 horses		\$ 1,566.00	\$ -
M530Y3	14.12	Engine after-treatment systems (EATS) 72 months 250,000 miles - HP over 460 horses		\$ 2,087.00	\$ -
M531O3	14.13	Engine after-treatment systems (EATS) 84 months 250,000 miles - HP over 460 horses		\$ 2,408.00	\$ -
M54174	14.14	iShift HD Transmission 48 months 500,000 miles		\$ 2,166.00	\$ -
M54184	14.15	iShift HD Transmission 60 months 500,000 miles		\$ 3,216.00	\$ -
N/A	14.15	Allison 60 month unlimited mileage Extended Warranty		\$ 1,312.00	\$ -
M560A6	14.16	HVAC (Air Conditioning) 60 months		\$ 840.00	\$ -
M59089	14.17	Starter 60 months 300,000 miles		\$ 282.00	\$ -
M60080	14.18	Alternator 60 months 300,000 miles		\$ 324.00	\$ -
M61071	14.19	Starter & Alternator 60 months 300,000 miles		\$ 438.00	\$ -
	14.20	Prebuild specification meeting (per person) to be held in St. Paul/Minneapolis area.		\$ 1.00	\$ -
	14.21	Pilot inspection meeting (per person).		\$ 2,250.00	\$ -

TRAILER TOW OPTIONS:

MC	15.1	Trailer tow package extended to rear of frame		\$ 636.00	\$ -
MC	15.2	Trailer package extend to rear of frame per Spec 12.12	1	\$ 947.00	\$ 947.00

VOLVO PRICING

MANUALS / INTEREST FEE:

	16.0	Percent interest per month (non-compounding) on unpaid cab & chassis balance. Applies only to CPV Members. (Payable after trade-in is delivered to vendor). Percentage/per month.			\$ -
	16.1	SEE Exhibit C : Specifications re interest to State agencies.			
	16.2	Premium Tech Tool		\$ 4,000.00	\$ -

Delivery Charges:

	17.0	Price per loaded mile Starting Point			
	17.1	Roseville		\$ 2.50	\$ -

Maintenance/ Body Shop Labor rates

	18.0	Rate for Initial Inspection/Diagnostic		\$ 195.00	\$ -
	18.1	Rate for Mechanical Work		\$ 195.00	\$ -
	18.2	Rate for Body Work		\$ 195.00	\$ -

Quantity Discounts:

	19.0	Enter the number of units that must be purchased and the corresponding discount offered to the purchaser. More than one quantity discount may be entered.		\$ (2,950.00)	\$ (2,950.00)
--	------	---	--	---------------	---------------

Next Model Year Upcharges

	20.0	Enter the following Production Model Year here >>>>>>>>>		2026	
	20.1	Percentage Upcharge for the following Model Year Base Unit	1	3.00%	\$ 3,471.78
	20.1	Percentage Upcharge for the following Model Year Options	1	3.00%	\$ 1,060.98

Total \$ 155,624.76

Memorandum

Date: September 29, 2025

To: Mayor and Councilmembers

From: David A. Krugler, City Engineer 

Subject: Proposed lot line adjustment – 445 157th Avenue and 505 157th Avenue

Introduction:

A lot line adjustment is proposed between the 4.38 acre 455 157th Avenue Parcel A (<https://gis.anokacountymn.gov/propertysearch/?find=18-32-23-34-0002>) and the 3.31 acre 505 157th Avenue Parcel B (<https://gis.anokacountymn.gov/propertysearch/?find=18-32-23-34-0003>). The proposed lot line adjustment will not change the amount of land for either parcel. A 200-scale aerial photo and a 400-scale half-section map are attached.

Discussion:

The lot line adjustment is required because the 445 157th Avenue main building encroaches onto the 505 157th Avenue parcel. The 157th Avenue frontage of the 445 Parcel A will increase by 24.95 feet and the 505 Parcel B will decrease by 24.95 feet. The required 10-foot drainage and utility easements are shown around the perimeter of the revised lot lines.

Soil borings have confirmed that there is adequate area for a secondary septic system on the resulting 505 157th Avenue Parcel B. Soil borings and the attached soil map have confirmed that there is no location for the 445 Parcel A area for a secondary septic system. The building official has approved a Type III system if a secondary system is required.

Recommendation:

It is recommended that the lot line adjustment be approved, subject to the following:

- The dedication of a 10-foot-wide drainage and utility easement inside the perimeter of both Parcel A and Parcel B north of 157th Avenue.

CERTIFICATE OF SURVEY

FOR: KARLSCHLOTTERBECK
OF: 445 & 505 157TH AVENUE NE,
HAM LAKE, MINNESOTA

EXISTING PARCEL A DESCRIPTION:
The South 54.45 feet of the West 4762.2 feet of the Southeast Quarter of Section 18, Township 23, Range 23, Anoka County, Minnesota, DCEPT the West 752.2 feet thereof.
(Per Anoka County Tax Records)

EXISTING PARCEL B DESCRIPTION:
The South 54.45 feet of the West 4762.2 feet of the Southeast Quarter of Section 18, Township 23, Range 23, Anoka County, Minnesota, DCEPT the West 752.2 feet thereof.
(Per Anoka County Tax Records)

PROPOSED PARCEL A DESCRIPTION:
The part of the South 54.45 feet of the East 7002.0 feet of the Southeast Quarter of Section 18, Township 23, Range 23, Anoka County, Minnesota, DCEPT the West 1702.0 feet thereof.
(Per Anoka County Tax Records)

PROPOSED PARCEL B DESCRIPTION:
The part of the South 54.45 feet of the East 7002.0 feet of the Southeast Quarter of Section 18, Township 23, Range 23, Anoka County, Minnesota, DCEPT the West 1702.0 feet thereof.
(Per Anoka County Tax Records)

PROPOSED PARCEL A DRAINAGE AND UTILITY EASEMENT DESCRIPTION:
An easement for drainage and utility purposes (ingress, egress, and access) the North, East, westerly, and westerly 150.00 feet of the following described parcel:
The part of the South 54.45 feet of the East 7002.0 feet of the Southeast Quarter of Section 18, Township 23, Range 23, Anoka County, Minnesota, DCEPT the West 1702.0 feet thereof.
(Per Anoka County Tax Records)

PROPOSED PARCEL B DRAINAGE AND UTILITY EASEMENT DESCRIPTION:
An easement for drainage and utility purposes (ingress, egress, and access) the North, East, westerly, and westerly 150.00 feet of the following described parcel:
The part of the South 54.45 feet of the East 7002.0 feet of the Southeast Quarter of Section 18, Township 23, Range 23, Anoka County, Minnesota, DCEPT the West 1702.0 feet thereof.
(Per Anoka County Tax Records)

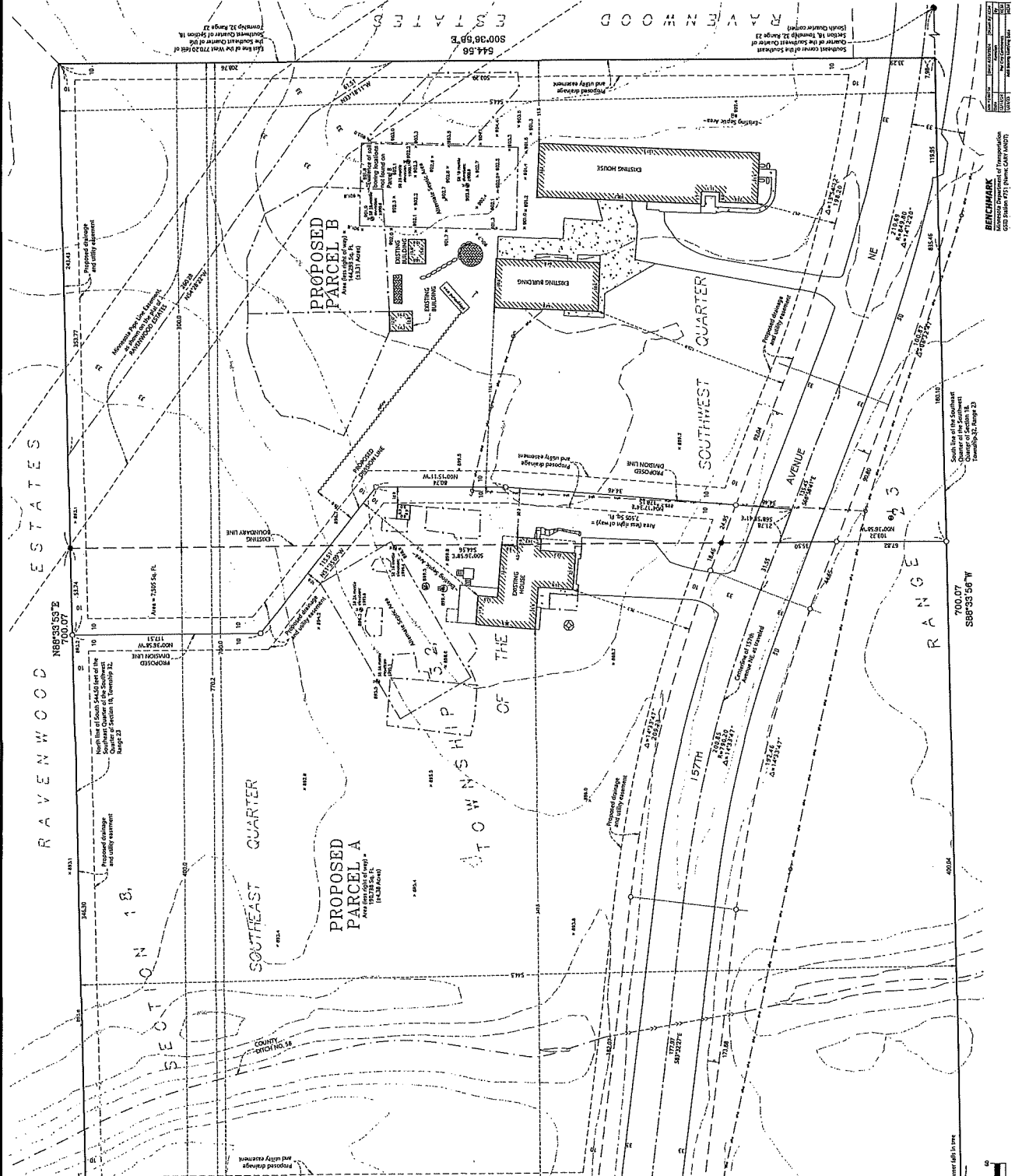
NOTES:
1. This plat was compiled by Northwind Land Surveying, LLC on 11/27/2024.
2. Record No. 19-23-23-34-0020.
3. This survey was prepared under the benefit of a title commitment. The surveyor's name and address are as shown on the title commitment.
4. This survey is subject to all restrictions, easements, and other interests shown thereon.
5. The surveyor is not responsible for any errors or omissions on the part of the client.
6. Evidence of land being, 10, 20, and 30 feet wide and discovered on the site of the survey.
7. The surveyor is not responsible for any errors or omissions on the part of the client.
8. The surveyor is not responsible for any errors or omissions on the part of the client.
9. The surveyor is not responsible for any errors or omissions on the part of the client.
10. The surveyor is not responsible for any errors or omissions on the part of the client.

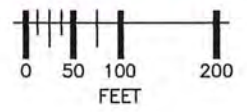
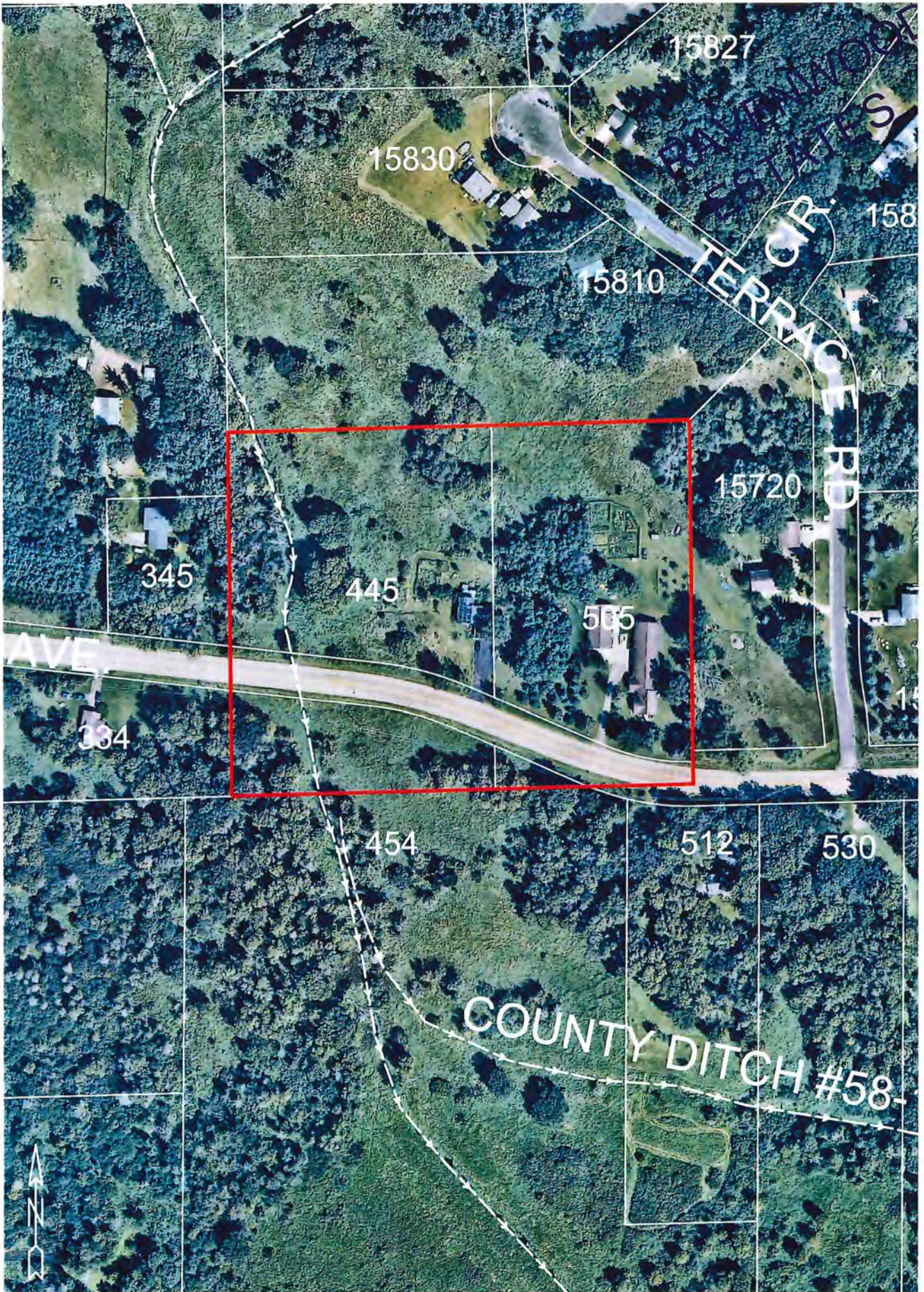
LEGEND

- Dotted line: Boundary
- Solid line: Centerline
- Circle with cross: Well
- Circle with dot: Pole
- Circle with horizontal line: Easement
- Circle with vertical line: Easement
- Circle with diagonal line: Easement
- Circle with square: Easement
- Circle with triangle: Easement
- Circle with diamond: Easement
- Circle with hexagon: Easement
- Circle with octagon: Easement
- Circle with star: Easement
- Circle with cross-hatch: Easement
- Circle with wavy lines: Easement
- Circle with dots: Easement
- Circle with horizontal wavy lines: Easement
- Circle with vertical wavy lines: Easement
- Circle with diagonal wavy lines: Easement
- Circle with cross-hatch wavy lines: Easement
- Circle with dots wavy lines: Easement
- Circle with horizontal wavy lines wavy lines: Easement
- Circle with vertical wavy lines wavy lines: Easement
- Circle with diagonal wavy lines wavy lines: Easement
- Circle with cross-hatch wavy lines wavy lines: Easement
- Circle with dots wavy lines wavy lines: Easement

Surveyed by: *[Signature]*
 Northwind Land Surveying, LLC
 Kevin C. McGee, R.L.S. No. 25842
 Date: 02/12/2025

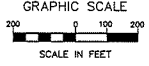
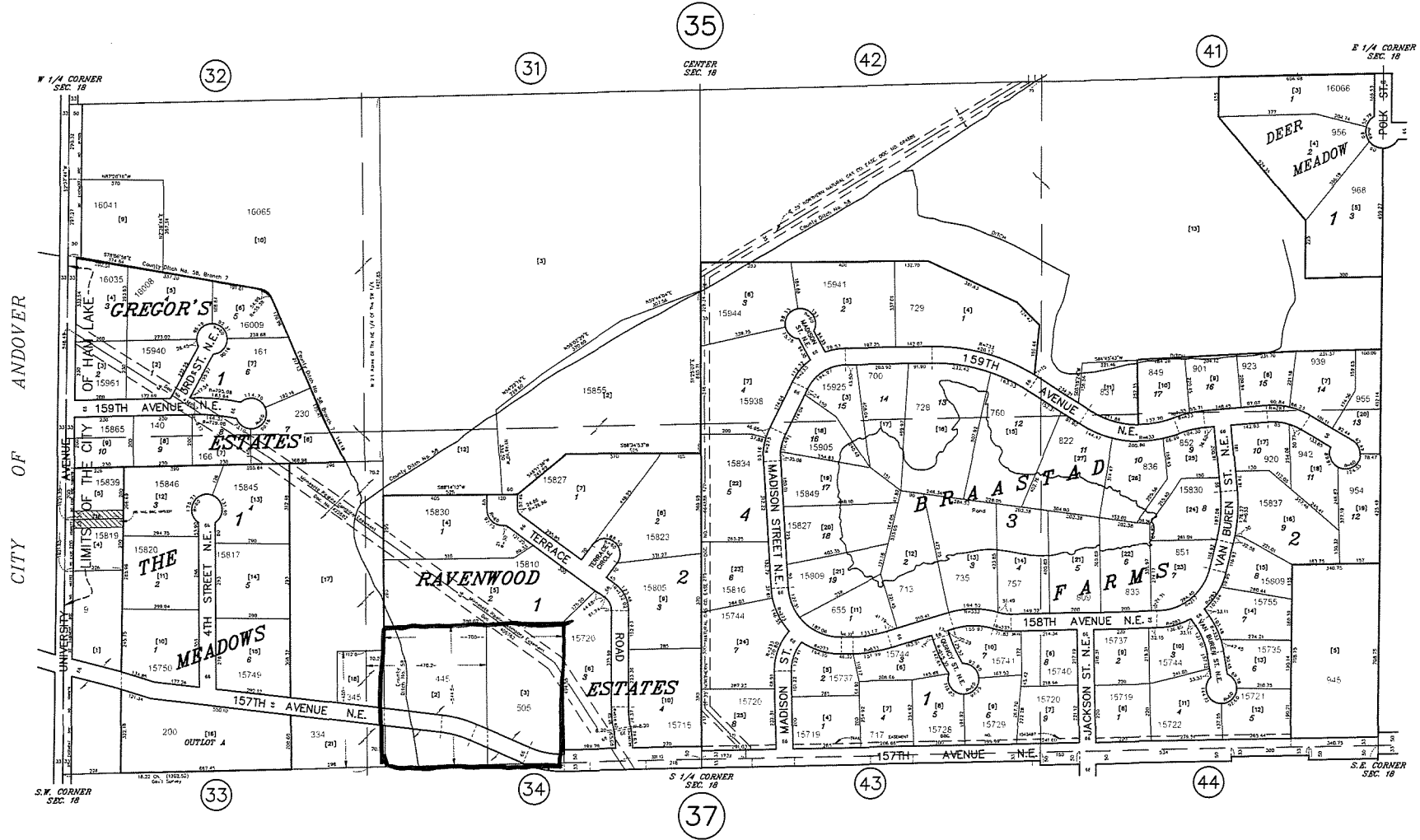
NORTHWIND
 LAND SURVEYING, LLC
 1876 EVERGREEN CIRCLE NW
 COON RAPIDS, MN 55448
 WWW.NORTHWINDLLC.COM





S 1/2 SECTION 18, T. 32, R. 23

CITY OF HAM LAKE



ANOKA COUNTY
SURVEYOR'S OFFICE
ROOM 224
2100 3RD AVENUE
ANOKA, MN 55303
(763) 324-3200

QUARTER QUARTER INDEX

22	21	12	11	NORTH HALF OF SECTION
23	24	13	14	
32	31	42	41	SOUTH HALF OF SECTION
33	34	43	44	

PROPERTY IDENTIFICATION NUMBER

Section	Township	Range	Quarter	Specific
Number	Number	Number	Quarter	Parcel
XX	XX	XX	XX	XXXX

SPECIFIC PARCEL NUMBERS ARE IN BRACKETS: [1]
EXAMPLE OF PIN NUMBER: 18-32-23-43-005

THIS IS A COMPILATION OF RECORDS AS THEY APPEAR IN THE ANOKA COUNTY OFFICES AFFECTING THE AREA SHOWN. THIS DRAWING IS TO BE USED ONLY FOR REFERENCE PURPOSES AND THE COUNTY IS NOT RESPONSIBLE FOR ANY INACCURACIES HEREIN CONTAINED.

Septic Tank Absorption Fields -- Mound (MN)—Anoka County, Minnesota



Map Scale: 1:1,100 if printed on A landscape (11" x 8.5") sheet.

0 15 30 60 90 Meters

0 50 100 200 300 Feet

Map projection: Web Mercator Corner coordinates: WGS84 Edge tics: UTM Zone 15N WGS84



Road Committee Notes
January 21, 2025

The Road Committee met on Tuesday, January 21, 2025 at 6:45 p.m. Present were Mayor Brian Kirkham; Councilmember Jim Doyle; City Engineer Dave Krugler; City Attorney Mark Berglund; Administrator Denise Webster; and Finance Director Andrea Murff.

1. Discussion of a feasibility study for Municipal State Aid (MSA) 143rd Avenue NE from Highway 65 NE to Lincoln Street NE

It was the consensus of the Road Committee to recommend to the City Council to direct Engineer Krugler to prepare a feasibility study for the upgrade of the Municipal State Aid (MSA) 143rd Avenue NE from Highway 65 NE to Lincoln Street NE.



**CITY OF HAM LAKE
STAFF REPORT**

To: Mayor and Councilmembers
From: Andrea Murff, Finance/Human Resource Director
Item/Title/Subject: 2024 4th Quarter Financials

INTRODUCTION/DISCUSSION:

Bank accounts have been reconciled through December 31, 2024 as well as a review of all activity in all funds has been performed. The following is a summary of my observations on the City’s financial position at the end of the 4th Quarter of 2024. All information presented is unaudited and is subject to end-of-year adjustments.

Cash and Investments

The City’s cash and investment balances are as follows:

	<u>12/31/2024</u>	<u>12/31/2023</u>	<u>Increase/ (Decrease)</u>
Checking	\$ 96,192	\$ (408,172)	\$ 504,302
Investments (at Market Value)	10,051,834	11,580,629	(1,528,795)
Total Cash and Investments	\$ 10,148,026	\$ 11,172,457	\$ (1,024,494)

<u>Investment Type</u>	<u>12/31/2024</u>	<u>12/31/2023</u>	<u>Increase/ (Decrease)</u>
Checking	\$ 96,192	\$ (408,172)	\$ 504,302
Money Market	5,234,649	7,785,636	(2,550,987)
Negotiable CDs	3,368,473	3,794,994	(426,521)
Municipal Bond	-	-	-
Government Agency Securities	1,448,712	-	1,448,712
Total Cash and Investments	\$ 10,148,026	\$ 11,172,457	\$ (1,024,494)

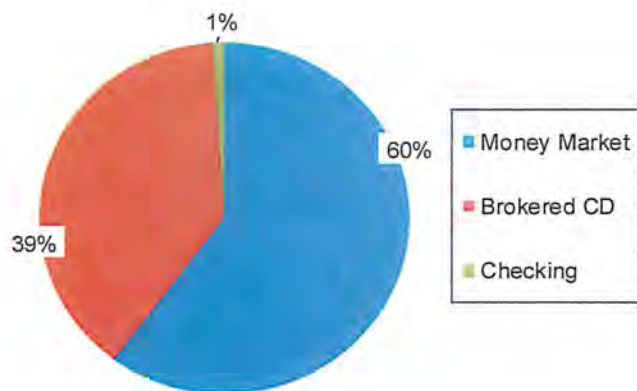
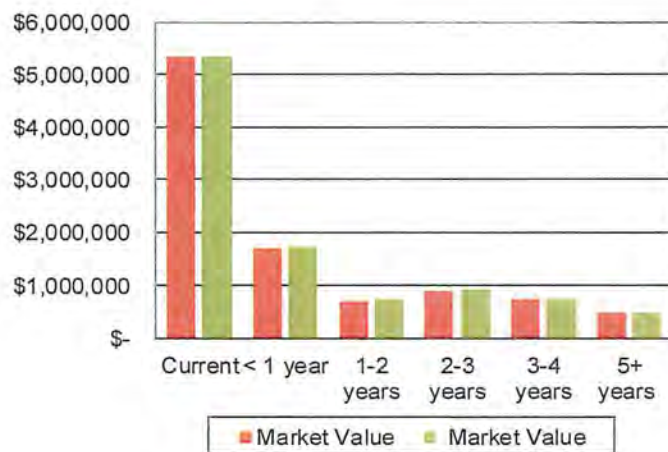
Investment Summary As of 12/31/2024 (unaudited)

Institution	Description	Type	Market Value 1/1/2024	Market Value 1/1/2024	Deposits - Purchases	Expenditures - Sales	Transfers	Interest	Unadjusted Market Value 12/31/2024	Market Value 12/31/2024	Unrealized gain / loss
RBC	RBC	Money Market	246,369.00	246,369.00	-	-	(246,263.26)	-	105.74	105.74	0.00
RBC	Bank Hapoalim New York	Brokered CD	229,671.75	229,671.75	-	(231,000.00)	(3,340.32)	3,340.32	(1,328.25)	-	1,328.25
RBC	BMO Harris BK NATL ASSN	Brokered CD	235,337.37	235,337.37	-	-	(1,248.42)	1,248.42	235,337.37	246,736.59	11,399.22
RBC	Merrick BK South Jordan Utah	Brokered CD	230,698.50	230,698.50	-	-	(998.70)	998.70	230,698.50	242,516.04	11,817.54
RBC	Texas Exchange Bk Crowley	Brokered CD	223,539.75	223,539.75	-	-	(1,747.80)	1,747.80	223,539.75	235,907.58	12,367.83
RBC	Malaga BK Palos Verdes Calif	Brokered CD	213,283.44	213,283.44	-	-	(1,354.16)	1,354.16	213,283.44	226,965.99	13,682.55
			1,378,899.81	1,378,899.81	-	(231,000.00)	(254,952.66)	8,689.40	901,636.55	952,231.94	50,595.39
US Bank	US Bank	Money Market	669,024.51	669,024.51	(1,186,061.02)	729,637.00	85,074.80	14,493.92	312,169.21	312,169.21	-
US Bank	US Treasury Bill	Government Securities	496,795.00	496,795.00	-	(487,345.00)	(12,655.00)	12,655.00	9,450.00	-	(9,450.00)
US Bank	US Treasury Bill	Government Securities			698,794.27	-	(5,022.40)	5,022.40	698,794.27	715,902.47	17,108.20
US Bank	US Treasury Bill	Government Securities			730,027.50	-	(11,610.58)	11,610.58	730,027.50	732,810.00	2,782.50
US Bank	American Express National Bank	Brokered CD	242,393.20	242,393.20	-	(245,000.00)	(7,657.42)	7,657.42	(2,606.80)	-	2,606.80
US Bank	Bmo Harris Bank Nat'l Assn	Brokered CD	242,448.16	242,448.16	-	(242,292.00)	(4,196.80)	4,196.80	156.16	-	(156.16)
US Bank	Bank of America - cd	Brokered CD	-	-	244,000.00	-	-	-	244,000.00	245,354.20	1,354.20
US Bank	Discover Bank	Brokered CD	238,830.90	238,830.90	-	-	(7,984.31)	7,984.31	238,830.90	243,750.50	4,919.60
US Bank	Fifth Third BK - CD	Brokered CD	243,041.31	243,041.31	-	(243,000.00)	(6,553.68)	6,553.68	41.31	-	(41.31)
US Bank	Flagstar Bank Nat'l Assn - CD	Brokered CD	-	-	244,000.00	-	-	-	244,000.00	246,064.24	2,064.24
US Bank	Israel Dis Bk New York	Brokered CD	242,989.84	242,989.84	-	(244,000.00)	(7,330.03)	7,330.03	(1,010.16)	-	1,010.16
US Bank	Security First Bank - Nebraska	Brokered CD	244,282.15	244,282.15	-	(245,000.00)	(3,911.61)	3,911.61	(717.85)	-	717.85
US Bank	Nicolet Nat'l Bk - Greenbay WI	Brokered CD	-	-	249,000.00	-	(7,103.32)	7,103.32	249,000.00	251,367.99	2,367.99
US Bank	State Bank India - Illinois	Brokered CD	242,207.00	242,207.00	-	(245,000.00)	(8,229.99)	8,229.99	(2,793.00)	-	2,793.00
US Bank	Riverside CA Cmnty College Dist	Brokered CD	-	-	242,239.25	-	(1,949.87)	1,949.87	242,239.25	243,933.25	1,694.00
			2,862,012.07	2,862,012.07	1,222,000.00	(1,222,000.00)	869.79	98,698.93	2,961,580.79	2,991,351.86	29,771.07
Falcon National Bank	Falcon National Bank	Money Market	79,817.64	79,817.64	-	(49,500.00)	24,244.02	218.80	54,780.46	54,780.46	-
Falcon National Bank	CD 88934 (renewed)	Brokered CD	200,000.00	200,000.00	-	-	(797.84)	797.84	200,000.00	200,000.00	-
Falcon National Bank	CD 89417 (renewed)	Brokered CD	300,000.00	300,000.00	-	(300,000.00)	(203.54)	203.54	-	-	-
Falcon National Bank	CD 89417 matured	Brokered CD	-	-	300,000.00	(300,000.00)	(6,023.20)	6,023.20	-	-	-
Falcon National Bank	CD 90376 (renewed)	Brokered CD	535,876.55	535,876.55	-	(535,876.55)	(2,584.81)	2,584.81	-	-	-
Falcon National Bank	CD 90484 (renewed)	Brokered CD	100,500.00	100,500.00	49,500.00	-	(2,816.66)	2,816.66	150,000.00	150,000.00	-
Falcon National Bank	Amarillo National Bank	Brokered CD	-	-	242,500.00	-	(3,428.57)	3,428.57	242,500.00	242,500.00	-
Falcon National Bank	CIBC Bank USA	Brokered CD	-	-	108,376.55	-	(1,532.26)	1,532.26	108,376.55	108,376.55	-
Falcon National Bank	Pacific Premier Bank	Brokered CD	-	-	242,500.00	-	(3,428.57)	3,428.57	242,500.00	242,500.00	-
Falcon National Bank	Western Alliance Bank	Brokered CD	-	-	242,500.00	-	(3,428.57)	3,428.57	242,500.00	242,500.00	-
			1,216,194.19	1,216,194.19	1,185,376.55	(1,185,376.55)	(0.00)	24,462.82	1,240,657.01	1,240,657.01	-
21st CENTURY BANK	ICS	Money Market	766,730.76	766,730.76	9,281,210.05	(9,785,703.21)	-	37,193.95	299,431.55	299,431.55	-
21st CENTURY BANK	CD		-	-	-	-	-	-	-	-	-
			766,730.76	766,730.76	9,281,210.05	(9,785,703.21)	-	37,193.95	299,431.55	299,431.55	-
4 M	4M Liquid Assets-101	Money Market	88,712.28	88,712.28	-	-	105.74	4,624.58	93,442.60	93,442.60	-
4 M	4M Plus Fund-101	Money Market	4,922,596.29	4,922,596.29	7,907,395.19	(5,000,000.00)	(3,514,153.08)	158,774.85	4,474,613.25	4,474,718.99	105.74
			5,011,308.57	5,011,308.57	7,907,395.19	(5,000,000.00)	(3,514,047.34)	163,399.43	4,568,055.85	4,568,161.59	105.74
21st CENTURY BANK	General/Checking	Checking	100,021.23	100,021.23	16,239,726.37	(20,239,977.76)	4,000,000.00	250.71	100,020.55	100,020.55	0.00
			100,021.23	100,021.23	16,239,726.37	(20,239,977.76)	4,000,000.00	250.71	100,020.55	100,020.55	0.00
			\$ 11,335,166.63	\$ 11,335,166.63	\$ 35,835,708.16	\$ (37,664,057.52)	\$ 231,869.79	\$ 332,695.24	\$ 10,071,382.30	\$ 10,151,854.50	\$ 80,472.20

Deposits in Transi	3,936.70
O/S Checks	(12,666.48)
Total	\$ 10,143,124.72

Investment Summary (continued)
As of 09/30/2024 (unaudited)

Maturities



Maturity	Unadjusted Market Value 12/31/2024	Market Value 12/31/2024	Variance 12/31/2024
Current	\$ 5,335,754.77	\$ 5,334,669.10	\$ (1,085.67)
< 1 year	1,690,743.32	1,718,879.68	28,136.36
1-2 years	711,539.75	727,326.02	15,786.27
2-3 years	912,077.71	942,868.46	30,790.75
3-4 years	730,027.50	732,810.00	2,782.50
5+ years	491,239.25	495,301.24	4,061.99
	<u>\$ 9,871,382.30</u>	<u>\$ 9,951,854.50</u>	<u>\$ 80,472.20</u>

Weighted average Rate of return	0.10%	12/31/2024
Average Maturity (years)	0.20	12/31/2024

Investment Type	Market Value 12/31/2024
Money Market	\$ 5,234,648.55
Brokered CD	\$ 3,368,472.93
Savings	\$ -
Government Securities	\$ 1,448,712.47
Municipal Securities	\$ -
Checking	\$ 100,020.55
	<u>\$ 10,151,854.50</u>

Operating Account

O/S Deposits	\$ 3,936.70
O/S Checks	\$ (12,666.48)
Reconciled Balance	\$ 10,143,124.72

Investment Summary (continued)

Current short-term rates being offered by financial institutions are very low as evidenced by the table of U.S. Treasury rates below. The U.S. Treasury rates provide a benchmark perspective for rate of return for Certified Deposits, Money Market accounts, and Securities.

Treasury Yields									
Date	1 mo	3 mo	6 mo	1 yr	2 yr	3 yr	5 yr	7 yr	10 yr
12/31/2019	1.48	1.55	1.60	1.59	1.58	1.62	1.69	1.83	1.92
03/31/2020	0.05	0.11	0.15	0.17	0.23	0.29	0.37	0.55	0.70
06/30/2020	0.13	0.16	0.18	0.16	0.16	0.18	0.29	0.49	0.66
09/30/2020	0.08	0.10	0.11	0.12	0.13	0.16	0.28	0.47	0.69
12/31/2020	0.08	0.09	0.09	0.10	0.13	0.17	0.36	0.65	0.93
03/31/2021	0.01	0.03	0.05	0.07	0.16	0.35	0.92	1.40	1.74
06/30/2021	0.05	0.05	0.06	0.07	0.25	0.74	0.87	1.21	1.45
09/30/2021	0.07	0.04	0.05	0.09	0.28	0.53	0.98	1.32	1.52
12/31/2021	0.06	0.06	0.19	0.39	0.73	0.97	1.26	1.44	1.52
03/31/2022	0.17	0.52	1.06	1.63	2.28	2.45	2.42	2.40	2.32
06/30/2022	1.28	1.72	2.51	2.80	2.92	2.99	3.01	3.04	2.98
09/30/2022	2.79	3.33	3.92	4.05	4.22	4.25	4.06	3.97	3.83
12/31/2022	4.12	4.42	4.76	4.73	4.41	4.22	3.99	3.96	3.88
03/31/2023	4.74	4.85	4.94	4.64	4.06	3.81	3.60	3.55	3.48
06/30/2023	5.24	5.43	5.47	5.40	4.87	4.49	4.13	3.97	3.81
09/30/2023	5.55	5.55	5.53	5.46	5.03	4.80	4.60	4.61	4.59
12/31/2023	5.60	5.40	5.26	4.79	4.23	4.01	3.84	3.88	3.88
03/31/2024	5.49	5.46	5.38	5.03	4.59	4.40	4.21	4.20	4.20
06/30/2024	5.47	5.48	5.33	5.09	4.71	4.52	4.33	4.33	4.36
09/30/2024	4.93	4.73	4.38	3.98	3.66	3.58	3.58	3.67	3.81
12/31/2024	4.40	4.37	4.24	4.16	4.25	4.27	4.38	4.48	4.58

https://home.treasury.gov/resource-center/data-chart-center/interest-rates/TextView?type=daily_treasury_yield_curve&field

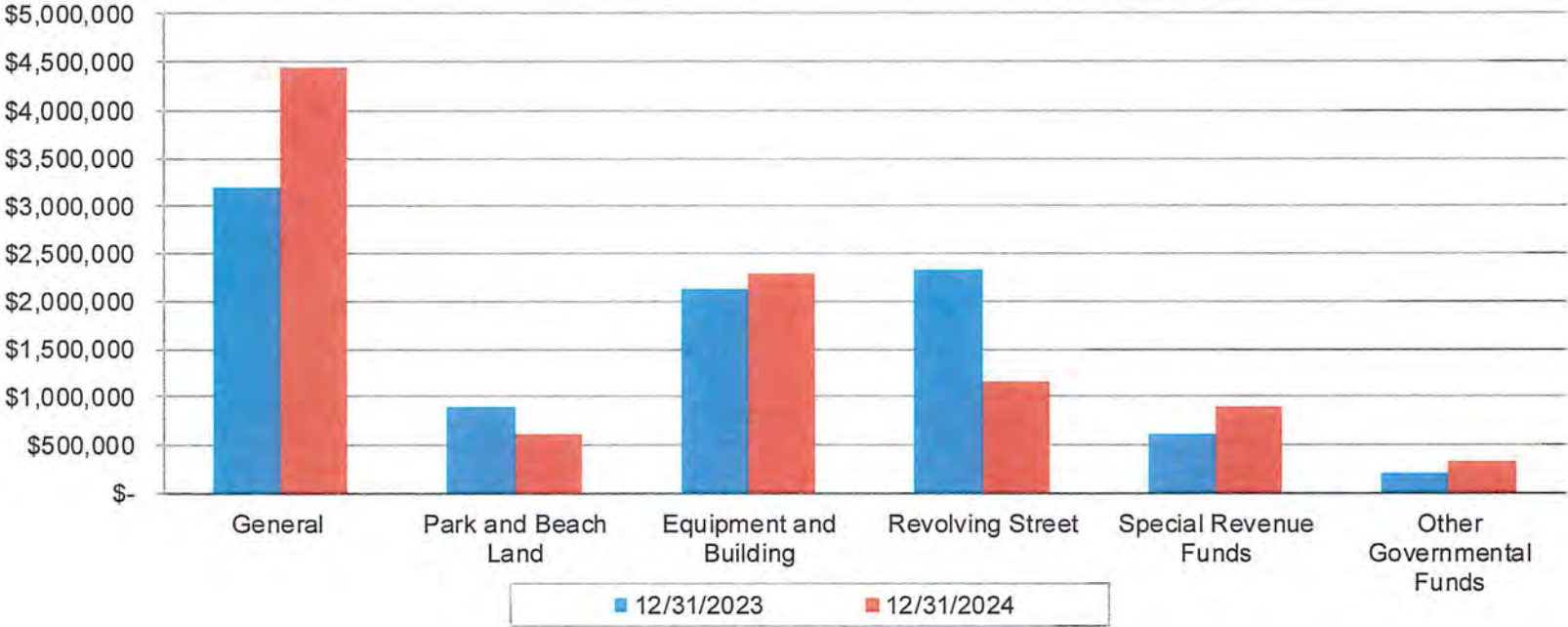
Cash Balance Summary by Fund
As of 12/31/23 and 12/31/2024 (unaudited)

		Balance 12/31/2023	Balance 12/31/2024	YTD Change From 12/31/2023
100	General Fund	\$ 4,401,581	\$ 4,439,397	\$ 37,816 ⁽¹⁾
210	Cable TV Fund	95,013	85,516	(9,496)
211	Ham Laker Fund	1,876	2,636	760
212	Lawful Gambling Contributions Fund	145,966	183,094	37,128
217	CARES Act Grant	-	-	-
230	Future Drainage Fund	130,057	139,943	9,887
231	Recycling Fund	37,944	40,252	2,307
232	Street Light Fund	225,373	255,830	30,457
250	Oakwilt Fund	11,458	11,959	501
261	Economic Development Fund	1,722	1,798	76
262	Ham Lake EDA Fund	-	160,860	160,860 ⁽²⁾
263	Lodging Tax Fund	3,385	2,829	(556)
370	2010 Cjp Bond Debt Service Fund	306,608	322,087	15,479
371	2016 Go Capital Note Debt Service Fund-Nmtc	26	26	-
410	General Govt Equipment Fund	75,487	84,294	8,807
411	Election Equipment Fund	3,450	5,978	2,529
412	Building Fund	265,621	287,115	21,494
420	Fire Department Equipment Fund	558,633	690,160	131,528 ⁽³⁾
421	Emergency Operations Center Fund	40,527	44,112	3,586
422	Siren Replacement Fund	38,650	40,318	1,668
428	Building Inspection Equipment Fund	8,772	19,487	10,715
430	Public Works Equipment Fund	614,450	895,655	281,205 ⁽⁴⁾
431	Revolving Street Fund	2,519,803	1,148,211	(1,371,592) ⁽⁵⁾
440	Park And Beach Land Fund	930,594	607,084	(323,510) ⁽⁶⁾
441	Parks Equipment Fund	167,214	217,087	49,873 ⁽⁴⁾
890	Trust	588,251	462,296.86	(125,954) ⁽⁷⁾
	Total	<u>\$ 11,172,457</u>	<u>\$ 10,148,026</u>	<u>\$ (1,024,432)</u>

Item Explanation of changes greater than \$50,000.

- ⁽¹⁾ See rev/exp for the General Fund for further explanation.
- ⁽²⁾ Reimbursement was received for prior Engineering, Attorney and CCDW fees for Crosstown Business Park Development.
- ⁽³⁾ The variance is due to the \$840,000 transfer after being offset by the payments for Firestation #3 and a Pumper Truck.
- ⁽⁴⁾ Cash increased due to budgeted transfers from General Fund.
- ⁽⁵⁾ Engineering for various projects and contractor payments for 2024 Bituminous Project, Creek Valley, and Meadow Park projects, which were offset by the budgeted transfer from the General Fund and MSA grant funding.
- ⁽⁶⁾ Purchase of backstops, shades, and bleachers for Lion's and Ham Lake Parks and playground equipment for Hidden Forest East Park.
- ⁽⁷⁾ Refunds on deposits held for park rental, land use permits, and performance bonds.

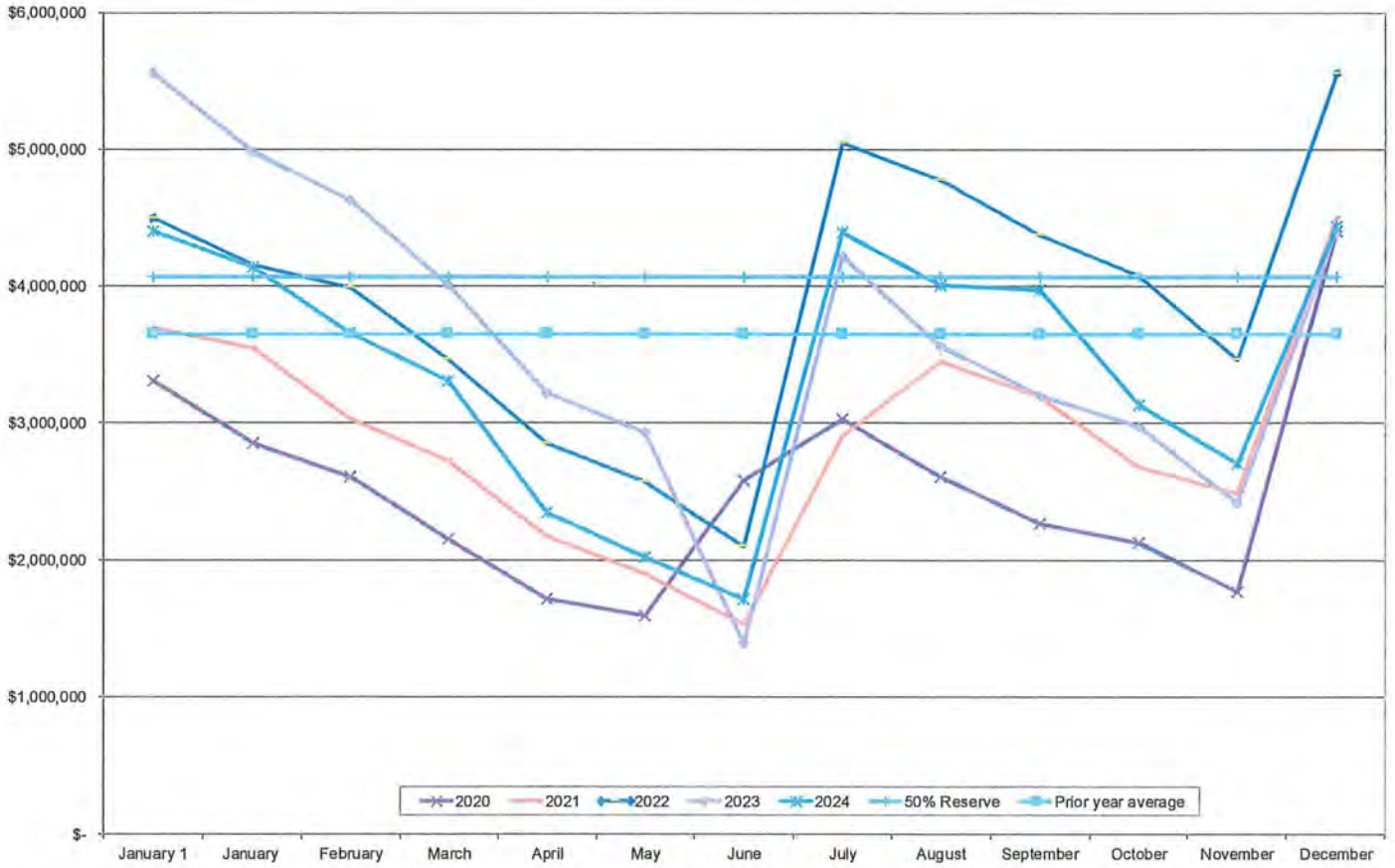
Cash Balance by Fund Compared to Prior Year (unaudited)



Fund	Key
<ul style="list-style-type: none"> General Park and Beach Land Equipment and Building Revolving Street Special Revenue Funds Other Governmental Funds 	<ul style="list-style-type: none"> Balance increased by more than 10% over prior year Balance decreased by more than 10% over prior year Balance within 10% of prior year

General Fund Budget Cash Summary (unaudited)

General Fund Cash Balances 2020-2024



General Fund

Receipts	YTD Budget	YTD Actual	Percent of YTD Budget	Disbursements	YTD Budget	YTD Actual	Percent of YTD Budget
Taxes	\$ 6,286,468	\$ 6,259,387	99.6 %	Council	\$ 110,031	\$ 144,598	131.4 %
Special Assessments	-	-	100.0	Administration/Clerk	341,836	405,114	118.5
Licenses and permits	537,600	436,579	81.2	Finance	381,693	372,664	97.6
Intergovernmental	176,000	326,731	185.6	Planning & Zoning	104,151	106,899	102.6
Charges for services	154,885	258,042	166.6	General Government	141,308	200,544	141.9
Fines and forfeitures	31,500	45,214	143.5	Information Technology	42,100	41,380	98.3
Interest on investments	30,000	161,202	537.3	Public Safety	2,409,687	2,224,954	92.3
Miscellaneous	10,500	179,155	1,706.2	Building Department	378,512	359,695	95.0
Transfers in	2,000	2,000	100.0	Public Works	1,274,627	1,086,694	85.3
	\$ 7,228,953	\$ 7,668,310	106.1 %	Parks and recreation	394,968	264,191	66.9
				Senior Center	19,926	18,149	91.1
				Transfers Out	2,548,500	2,548,500	100.0 %
					\$ 8,147,340	\$ 7,773,382	95.4

Key

- 👆 Varies more than 10% than budget positively
- 👇 Varies more than 10% than budget negatively
- 👉 Within 10% of budget

General Fund Budget Summary As of 12/31/24 (unaudited)

	Annual Budget	Budget Thru 12/31/2024 100%	Actual Thru 12/31/2024	Variance - Favorable (Unfavorable)	Percent Received or Expended Based on Budget thru 12/31/2024
Revenues					
Taxes	\$ 6,286,468	\$ 6,286,468	\$ 6,259,387	\$ (27,081)	99.57 %
Special Assessments	-	-	-	-	N/A
Licenses and permits	537,600	537,600	436,579	(101,021) ^{¶(1)}	81.21
Intergovernmental	176,000	176,000	326,731	150,731 ^{¶(2)}	185.64
Charges for services	154,885	154,885	258,042	103,157 ^{¶(3)}	166.60
Fines and forfeitures	31,500	31,500	45,214	13,714	143.54
Interest on investments	30,000	30,000	161,202	131,202 ^{¶(4)}	537.34
Miscellaneous	10,500	10,500	179,155	168,655 ^{¶(5)}	1,706.23
Total Revenues	7,226,953	7,226,953	7,666,310	439,357	
Expenditures					
Council	\$ 110,031	\$ 110,031	\$ 144,598	\$ (34,566) ^{¶(6)}	131.41 %
Administration/Clerk	341,836	341,836	405,114	(63,277) ^{¶(7)}	118.51
Finance	381,693	381,693	372,664	9,029	97.63
Planning & Zoning	104,151	104,151	106,899	(2,748)	102.64
General Government	141,308	141,308	200,544	(59,236) ^{¶(8)}	141.92
Information Technology	42,100	42,100	41,380	720	98.29
Public Safety	2,409,687	2,409,687	2,224,954	184,733	92.33
Building Department	378,512	378,512	359,695	18,817	95.03
Public Works	1,274,627	1,274,627	1,086,694	187,933 ^{¶(9)}	85.26
Parks and recreation	394,968	394,968	264,191	130,777 ^{¶(10)}	66.89
Senior Center	19,926	19,926	18,149	1,777	91.08
Total Expenditures	5,598,840	5,598,840	5,224,882	373,959	93.32
Excess Revenues (Expenditures)	1,628,113	1,628,113	2,441,429	813,316	
Other Financing Sources (Uses)					
Transfers in	2,000	2,000	2,000	-	100.00
Transfers out	(2,548,500)	(2,548,500)	(2,548,500)	-	100.00
TOTAL OTHER FINANCING SOURCES (USES)	(2,546,500)	(2,546,500)	(2,546,500)	-	
Excess (Deficiency) of Revenues and Other Financing Sources Over (Under) Expenditures and Other Uses	\$ (918,387)	\$ (918,387)	\$ (105,071)	\$ 813,316	

Item Explanation of items percentage received/expended less than 90% or greater than 110% and \$ variance greater than \$20,000.

- ¶(1) After several years of coming in over budget for Building and Right of Way permits, these budget lines were increased, however, the projections were higher than anticipated for the year. Overall, the accumulated revenue actuals for 2024 are slightly higher than 2023 actuals.
- ¶(2) The MSA Maintenance Aid, Fire Relief State Aid, and Fire Training has been paid in full for the year and came in over budgeted amounts. There were also grants not budgeted such as an election grant in the amount of \$10,267 and ARPA funds that were spent in 2024. Note on ARPA: All funds were spent in 2024.
- ¶(3) Tower revenue is coming in higher than anticipated due to more subleases and payment for the Vista conduit debt issuance.
- ¶(4) Money market rates have been higher than last several years resulting in higher monthly interest revenue.
- ¶(5) General donations exceeded 2024 budget expectations and reimbursement for the 2024 Compensation Plan was received.
- ¶(6) Higher than anticipated attorney and engineering fees for several land use issues and a new development agreement.
- ¶(7) The role of the Administration Assistant has changed. One of the Assisstance is currently doing more administrative and elections activities than budgeted creating a budget deficit for Administration/Clerk due to wages and benefits.
- ¶(8) ARPA spending is not budgeted and we have currently expended \$69,570 in 2024.
- ¶(9) Public works is under budget due to less activity than antipated for blacktop maintenance, fuel, and street repair supplies as well as lower than anticipated anticipated Worker's Compensation premiums.
- ¶(10) The favorable variance is due to less employee activity done in the Parks vs. Public Works.

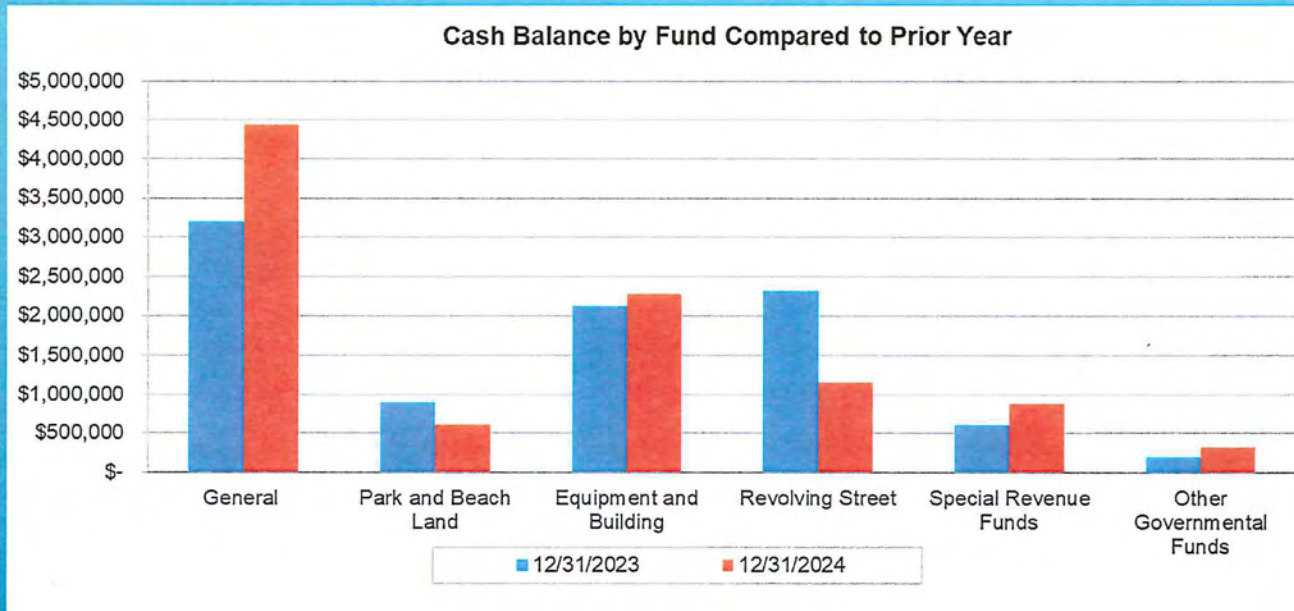
**A detailed report of revenues and expenditures can be provided upon request.

CITY OF HAM LAKE 4TH QUARTER REPORT

Presented by Finance/Human Resource Director, Andrea Murff

OVERALL CASH POSITION

	Balance 12/31/2023	Balance 12/31/2024	YTD Change From 12/31/2023
General Fund	\$ 4,401,581	\$ 4,439,397	\$ 37,816
Cable TV Fund	95,013	85,516	(9,496)
Ham Laker Fund	1,876	2,636	760
Lawful Gambling Contributions Fund	145,966	183,094	37,128
CARES Act Grant	-	-	-
Future Drainage Fund	130,057	139,943	9,887
Recycling Fund	37,944	40,252	2,307
Street Light Fund	225,373	255,830	30,457
Oakwilt Fund	11,458	11,959	501
Economic Development Fund	1,722	1,798	76
Ham Lake EDA Fund	-	160,860	160,860
Lodging Tax Fund	3,385	2,829	(556)
2010 Cip Bond Debt Service Fund	306,608	322,087	15,479
2016 Go Capital Note Debt Service Fund-Nmtc	26	26	-
General Govt Equipment Fund	75,487	84,294	8,807
Election Equipment Fund	3,450	5,978	2,529
Building Fund	265,621	287,115	21,494
Fire Department Equipment Fund	558,633	690,160	131,528
Emergency Operations Center Fund	40,527	44,112	3,586
Siren Replacement Fund	38,650	40,318	1,668
Building Inspection Equipment Fund	8,772	19,487	10,715
Public Works Equipment Fund	614,450	895,655	281,205
Revolving Street Fund	2,519,803	1,148,211	(1,371,592)
Park And Beach Land Fund	930,594	607,084	(323,510)
Parks Equipment Fund	167,214	217,087	49,873
Trust	588,251	462,296.86	(125,954)
Total	\$ 11,172,457	\$ 10,148,026	\$ (1,024,432)



GRAPH OF OVERALL CASH POSITION BY FUND TYPE

INVESTMENT SUMMARY

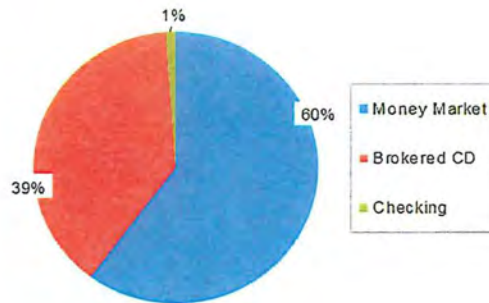
Institution	Description	Type	Market Value 1/1/2024	Market Value 1/1/2024	Deposits - Purchases	Expenditures - Sales	Transfers	Interest	Unadjusted Market Value 12/31/2024	Market Value 12/31/2024	Unrealized gain / loss
RBC	RBC	Money Market	240,369.00	240,369.00	-	-	(240,263.26)	-	105.74	105.74	0.00
RBC	Bank Hapoalim New York	Brokered CD	229,671.75	229,671.75	-	(231,000.00)	(3,340.32)	3,340.32	(1,326.25)	-	1,326.25
RBC	BMO Harris BK NATL ASSN	Brokered CD	235,337.37	235,337.37	-	-	(1,246.42)	1,246.42	235,337.37	240,730.59	11,399.22
RBC	Merrick BK South Jordan Utah	Brokered CD	230,696.50	230,696.50	-	-	(992.70)	992.70	230,696.50	242,516.04	11,817.54
RBC	Texas Exchange BK Crowley	Brokered CD	223,539.75	223,539.75	-	-	(1,747.60)	1,747.60	223,539.75	235,907.50	12,367.53
RBC	Malaga BK Palos Verdes Calif	Brokered CD	213,283.44	213,283.44	-	-	(1,354.16)	1,354.16	213,283.44	226,905.99	13,622.55
			1,378,959.81	1,378,959.81	-	(231,000.00)	(254,952.66)	8,689.40	901,638.55	952,231.94	50,595.39
US Bank	US Bank	Money Market	669,024.51	669,024.51	(1,186,051.02)	729,637.00	85,074.80	14,493.92	312,169.21	312,169.21	-
US Bank	US Treasury Bill	Government Securities	496,795.00	496,795.00	-	(487,345.00)	(12,055.00)	12,055.00	9,450.00	-	(9,450.00)
US Bank	US Treasury Bill	Government Securities	-	-	696,794.27	-	(5,022.40)	5,022.40	696,794.27	715,902.47	17,108.20
US Bank	US Treasury Bill	Government Securities	-	-	730,027.50	-	(11,610.58)	11,610.58	730,027.50	732,810.00	2,782.50
US Bank	American Express National Bank	Brokered CD	242,393.20	242,393.20	-	(245,000.00)	(7,657.42)	7,657.42	(2,606.60)	-	2,606.80
US Bank	Bmo Harris Bank Natl Assn	Brokered CD	242,448.16	242,448.16	-	(242,292.00)	(4,196.80)	4,196.80	156.16	-	(156.16)
US Bank	Bank of America - cd	Brokered CD	-	-	244,000.00	-	-	-	244,000.00	245,354.20	1,354.20
US Bank	Discover Bank	Brokered CD	238,830.90	238,830.90	-	-	(7,984.31)	7,984.31	238,830.90	243,750.00	4,919.60
US Bank	Fifth Third Bk - CD	Brokered CD	243,041.31	243,041.31	-	(243,000.00)	(8,553.68)	8,553.68	41.31	-	(41.31)
US Bank	Flagstar Bank Natl Assn - CD	Brokered CD	-	-	244,000.00	-	-	-	244,000.00	246,094.24	2,094.24
US Bank	Israel Dis Bk New York	Brokered CD	242,989.84	242,989.84	-	(244,000.00)	(7,330.03)	7,330.03	(1,010.16)	-	1,010.16
US Bank	Security First Bank - Nebraska	Brokered CD	244,282.15	244,282.15	-	(245,000.00)	(3,911.61)	3,911.61	(717.55)	-	717.55
US Bank	Norfolk Natl Bk - Greenbay, WI	Brokered CD	-	-	249,000.00	-	(7,103.32)	7,103.32	249,000.00	251,367.99	2,367.99
US Bank	State Bank India - Illinois	Brokered CD	242,207.00	242,207.00	-	(245,000.00)	(6,229.99)	6,229.99	(2,793.00)	-	2,793.00
US Bank	Riverside CA Cmnty College Dist	Brokered CD	-	-	242,239.25	-	(1,949.67)	1,949.67	242,239.25	243,933.25	1,694.00
			2,862,012.07	2,862,012.07	1,222,000.00	(1,222,000.00)	869.79	96,698.93	2,961,560.79	2,991,351.66	29,771.07
Falcon National Bank	Falcon National Bank	Money Market	79,817.04	79,817.04	-	(49,500.00)	24,244.02	218.80	54,780.46	54,780.46	-
Falcon National Bank	CD 88634 (renewed)	Brokered CD	200,000.00	200,000.00	-	-	(797.84)	797.84	200,000.00	200,000.00	-
Falcon National Bank	CD 89417 (renewed)	Brokered CD	300,000.00	300,000.00	-	(300,000.00)	(203.54)	203.54	-	-	-
Falcon National Bank	CD 89417 matured	Brokered CD	-	-	300,000.00	(300,000.00)	(6,023.20)	6,023.20	-	-	-
Falcon National Bank	CD 90370 (renewed)	Brokered CD	535,876.55	535,876.55	-	(535,876.55)	(2,594.81)	2,594.81	-	-	-
Falcon National Bank	CD 90484 (renewed)	Brokered CD	100,500.00	100,500.00	49,500.00	-	(2,816.06)	2,816.06	150,000.00	150,000.00	-
Falcon National Bank	Armañillo National Bank	Brokered CD	-	-	242,500.00	-	(3,428.57)	3,428.57	242,500.00	242,500.00	-
Falcon National Bank	CIBC Bank USA	Brokered CD	-	-	108,376.55	-	(1,532.26)	1,532.26	108,376.55	108,376.55	-
Falcon National Bank	Pacific Premier Bank	Brokered CD	-	-	242,500.00	-	(3,428.57)	3,428.57	242,500.00	242,500.00	-
Falcon National Bank	Western Alliance Bank	Brokered CD	-	-	242,500.00	-	(3,428.57)	3,428.57	242,500.00	242,500.00	-
			1,216,194.19	1,216,194.19	1,185,376.55	(1,185,376.55)	(0.00)	24,482.82	1,240,857.01	1,240,857.01	-
21st CENTURY BANK	ICS	Money Market	766,730.76	766,730.76	9,281,210.05	(9,785,703.21)	-	37,193.95	299,431.55	299,431.55	-
21st CENTURY BANK	CD		-	-	-	-	-	-	-	-	-
			766,730.76	766,730.76	9,281,210.05	(9,785,703.21)	-	37,193.95	299,431.55	299,431.55	-
4 M	4M Liquid Assets-101	Money Market	88,712.28	88,712.28	-	-	105.74	4,024.58	93,442.60	93,442.60	-
4 M	4M Plus Fund-101	Money Market	4,922,596.29	4,922,596.29	7,907,395.19	(5,000,000.00)	(3,514,153.08)	156,774.85	4,474,613.25	4,474,718.99	105.74
			5,011,308.57	5,011,308.57	7,907,395.19	(5,000,000.00)	(3,514,047.34)	163,399.43	4,569,055.85	4,569,161.59	105.74
21st CENTURY BANK	General/Checking	Checking	100,021.23	100,021.23	18,239,726.37	(20,239,977.76)	4,000,000.00	250.71	100,020.55	100,020.55	0.00
			100,021.23	100,021.23	18,239,726.37	(20,239,977.76)	4,000,000.00	250.71	100,020.55	100,020.55	0.00
			\$ 11,335,166.63	\$ 11,335,166.63	\$ 35,835,708.16	\$ (37,664,057.52)	\$ 231,869.79	\$ 332,695.24	\$ 10,071,332.30	\$ 10,151,854.60	\$ 80,472.20

Deposits in Transi
O/S Checks
Total

3,936.70
(12,666.48)
\$ 10,143,124.72

INVESTMENT SUMMARY

Maturities



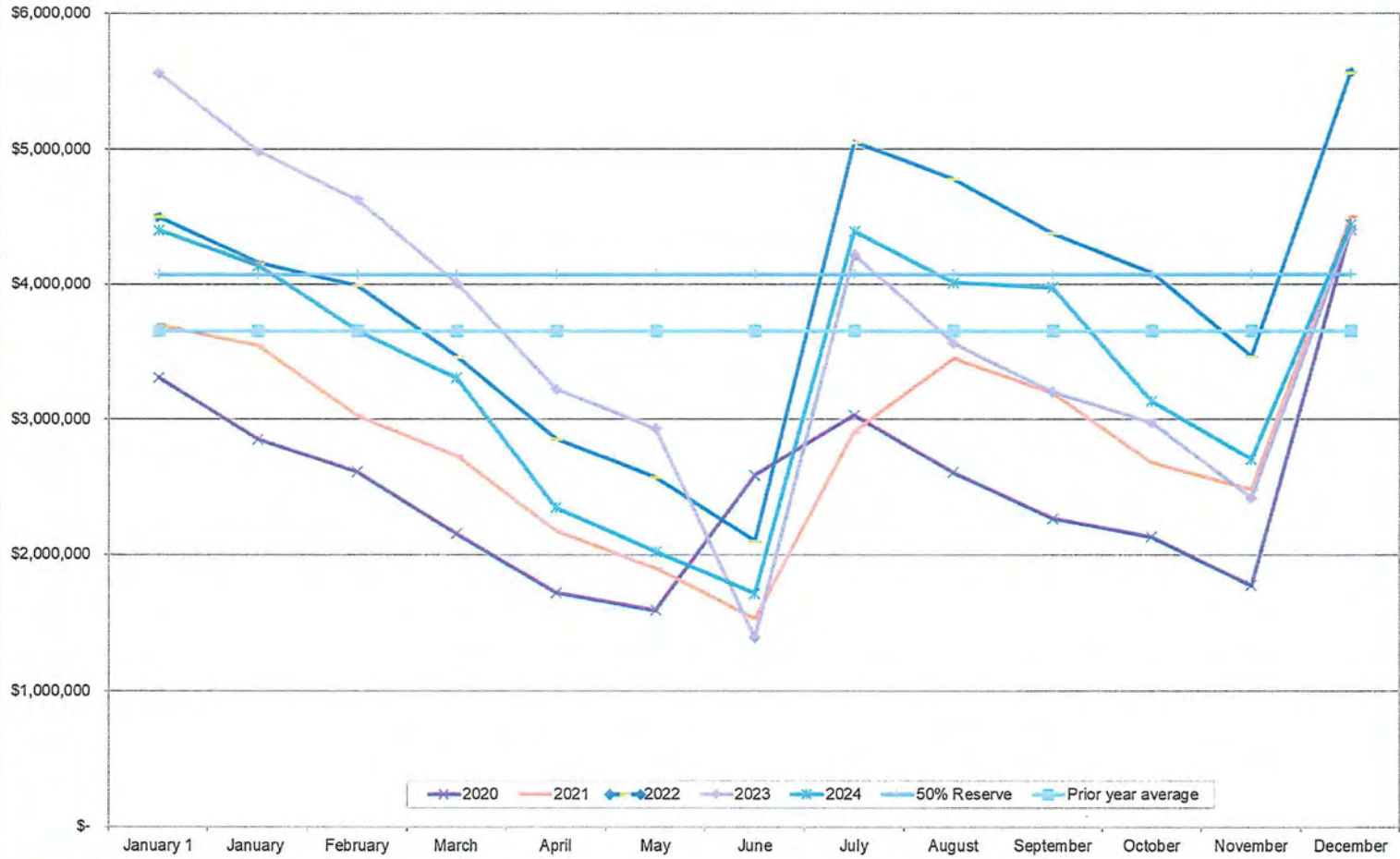
Maturity	Unadjusted Market Value 12/31/2024	Market Value 12/31/2024	Variance 12/31/2024
Current	\$ 5,335,754.77	\$ 5,334,669.10	\$ (1,085.67)
< 1 year	1,690,743.32	1,718,879.68	28,136.36
1-2 years	711,539.75	727,326.02	15,786.27
2-3 years	912,077.71	942,868.46	30,790.75
3-4 years	730,027.50	732,810.00	2,782.50
5+ years	491,239.25	495,301.24	4,061.99
	<u>\$ 9,871,382.30</u>	<u>\$ 9,951,854.50</u>	<u>\$ 80,472.20</u>

Weighted average Rate of return	0.10%	12/31/2024
Average Maturity (years)	0.20	12/31/2024

Investment Type	Market Value 12/31/2024
Money Market	\$ 5,234,648.55
Brokered CD	\$ 3,368,472.93
Savings	\$ -
Government Securities	\$ 1,448,712.47
Municipal Securities	\$ -
Checking	\$ 100,020.55
	<u>\$ 10,151,854.50</u>

Operating Account	
O/S Deposits	\$ 3,936.70
O/S Checks	\$ (12,666.48)
Reconciled Balance	<u>\$ 10,143,124.72</u>

General Fund Cash Balances 2020-2024

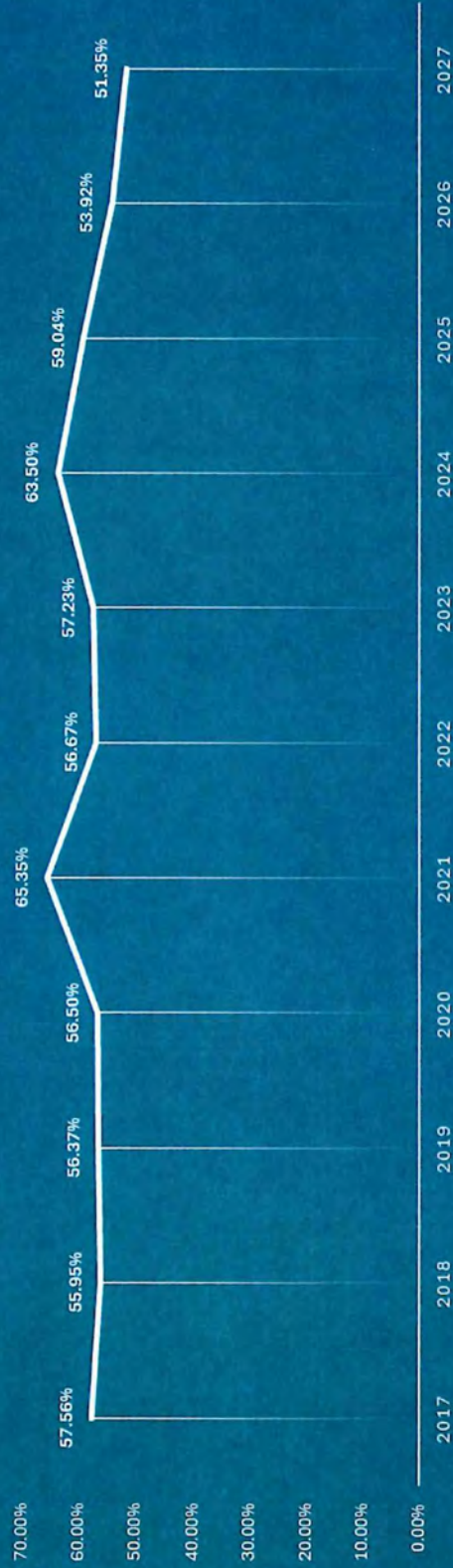


GENERAL FUND BUDGET TO ACTUAL

	Annual Budget	Budget Thru 12/31/2024 100%	Actual Thru 12/31/2024	Variance - Favorable (Unfavorable)	Percent Received or Expended Based on Budget thru 12/31/2024
Revenues					
Taxes	\$ 6,286,468	\$ 6,286,468	\$ 6,259,387	\$ (27,081)	99.57 %
Special Assessments	-	-	-	-	N/A
Licenses and permits	537,600	537,600	436,579	(101,021) ⁽¹⁾	81.21
Intergovernmental	176,000	176,000	326,731	150,731 ⁽²⁾	185.64
Charges for services	154,885	154,885	258,042	103,157 ⁽³⁾	166.60
Fines and forfeitures	31,500	31,500	45,214	13,714	143.54
Interest on investments	30,000	30,000	161,202	131,202 ⁽⁴⁾	537.34
Miscellaneous	10,500	10,500	179,155	168,655 ⁽⁵⁾	1,706.23
Total Revenues	7,226,953	7,226,953	7,666,310	439,357	
Expenditures					
Council	\$ 110,031	\$ 110,031	\$ 144,598	\$ (34,566) ⁽⁶⁾	131.41 %
Administration/Clerk	341,836	341,836	405,114	(63,277) ⁽⁷⁾	118.51
Finance	381,693	381,693	372,664	9,029	97.63
Planning & Zoning	104,151	104,151	106,899	(2,748)	102.64
General Government	141,308	141,308	200,544	(59,236) ⁽⁸⁾	141.92
Information Technology	42,100	42,100	41,380	720	98.29
Public Safety	2,409,687	2,409,687	2,224,954	184,733	92.33
Building Department	378,512	378,512	359,695	18,817	95.03
Public Works	1,274,627	1,274,627	1,086,694	187,933 ⁽⁹⁾	85.26
Parks and recreation	394,968	394,968	264,191	130,777 ⁽¹⁰⁾	66.89
Senior Center	19,926	19,926	18,149	1,777	91.08
Total Expenditures	5,598,840	5,598,840	5,224,882	373,959	93.32
Excess Revenues (Expenditures)	1,628,113	1,628,113	2,441,429	813,316	
Other Financing Sources (Uses)					
Transfers in	2,000	2,000	2,000	-	100.00
Transfers out	(2,548,500)	(2,548,500)	(2,548,500)	-	100.00
TOTAL OTHER FINANCING SOURCES (USES)	(2,546,500)	(2,546,500)	(2,546,500)	-	
Excess (Deficiency) of Revenues and Other Financing Sources Over (Under) Expenditures and Other Uses	\$ (918,387)	\$ (918,387)	\$ (105,071)	\$ 813,316	

GENERAL FUND'S FUND BALANCE RATIO

FUND BALANCE RATIO



* The fund balance used for 2024 was the fund balance from 2023 less the \$105,071, the projected excess expenditure over revenues for the 2024. The Fund Balance for 2025 is the 2024 Fund balance less the use of \$186,732 of reserves for the budget defi



QUESTIONS?

ORDINANCE NO. 25-XX

An Ordinance relating to ARTICLE 9, WETLAND BANK, in areas zoned R-A (Rural Single Family Residential), subject to certain conditions.

Be it ordained by the City Council of the City of Ham Lake, Anoka County, Minnesota, as follows:

9-210.3 Rural Single Family Residential (R-A)

b Conditional Uses: The following shall apply to Conditional Uses in the R-A Districts.

b) Listing of Conditional Uses: The following Conditional Uses shall apply in the R-A Districts:

viii) Wetland Banking under Article 9-330.8 of the Ham Lake City Code.

9-330.8 Wetland Bank A "Wetland Bank," "State Wetland Banking System," or "Bank" means a system of identifying wetlands restored or created for replacement credit and providing for, facilitating, and tracking the exchange of wetland banking credits for projects that require replacement plans or wetland mitigation required by other local, state, or federal authorities.

- A. Statutory Conditions** It shall be a mandatory condition of any Conditional Use Permit issued for a Wetland Bank that the party holding the permit has complied with all standards and procedures related to a State wetland banking system as provided in Minnesota Rules parts 8420.0700 to 8420.0820.
- B. Monitoring Fees** To the extent the City is responsible for the role of the Local Government Unit, the City shall collect a monitoring fee for its required monitoring activities according to the City of Ham Lake Fee Schedule as amended from time to time.
- C. Maintenance Fee** The permit holder shall pay the City a Maintenance Fee of 3% of the value of each credit sold. 2% of said Maintenance Fee shall be deposited into the general fund and 1% shall be deposited into the park fund. The total value of the credits to be sold shall be determined when the permit is issued and the permit holder shall provide a letter of credit in an amount equal to 3% of the total value of the credits. The letter of credit shall have a ten-year life and can be reduced annually as the Maintenance Fee is paid for the credits sold in each calendar year.
- D. Easement** It shall be a mandatory condition of any Conditional Use Permit issued for a Wetland Bank that the permit holder dedicate to the City an easement through and/or adjacent to the Wetland Bank for a 10-foot wide trail installed by the permit holder to include sufficient sloping and drainage as determined by the City Engineer. The easement shall be for public use. The 20-foot wide minimum easement shall be maintained by the Maintenance Fee collected as part of this Article. Permit holder shall install, at permit holder's expense, appropriate signage identifying the trail and

associated area and any rules or regulations for the use of the trail and associated area as determined by the City.

In the event dedication of a trail easement is not economically feasible or possible, then the permit holder shall pay parkland dedication fees in lieu of the easement dedication. The parkland dedication fee will be based on the current per lot parkland dedication fee schedule. The parkland dedication fee will be collected for each credit available for sale in the acre of the parcel considered for the wetland bank. However, at the discretion of the City Council, the per acre credit fee can be waived or reduced with credit given for amenities provided to the residential developments associated with the wetland banking application, if any, that exceed the parkland dedication fee required for the residential development.

- E. Road Frontage** Wetland Banks shall have improved roadway frontage for access as determined by the City Engineer. If any excavation is required for the creation of the Wetland Bank, road access of at least 9 tons bearing capacity shall be required.

Presented to the Ham Lake City Council on February 3, 2025 and adopted by a unanimous vote this _____ of _____, 2025.

Brian Kirkham, Mayor

Denise Webster, City Clerk

Denise Webster

From: Meyer, Ben (BWSR) <ben.meyer@state.mn.us>
Sent: Friday, January 17, 2025 9:39 AM
To: Brian Kirkham; Denise Webster
Subject: RE: Ham Lake

Caution: This email originated outside our organization; please use caution.

Brian,

Sorry we kept missing each other via phone. I'll answer each question below but feel to reach out if you would like clarification or have further discussion items.

Regards,

Ben Meyer | Wetland Specialist
Minnesota Board of Water and Soil Resources (BWSR)
C: 612-201-9806

From: Brian Kirkham <BKirkham@hamlakemn.gov>
Sent: Thursday, January 16, 2025 10:09 AM
To: Meyer, Ben (BWSR) <ben.meyer@state.mn.us>; Denise Webster <DWebster@hamlakemn.gov>
Subject: Ham Lake

You don't often get email from bkirkham@hamlakemn.gov. [Learn why this is important](#)

This message may be from an external email source.

Do not select links or open attachments unless verified. Report all suspicious emails to Minnesota IT Services Security Operations Center.

Hi Ben,

Thanks for taking the time to answer a few question our city council, staff, and residents have about wetland banking. The city council of Ham Lake is really excited for the potential of two big wetland banks located in Ham Lake.

Let me get right to the questions

1. Is there any maintenance required after the credits are all sold?

Yes. The sponsor/landowner is responsible for maintenance under the State Conservation Easement as referenced in the approved Bank Plan. Maintenance could include mowing, weed management, burns, outlet repair, etc. BWSR bank monitoring staff periodically field review all our Conservation Easements throughout the state and will inform a landowner if there are issues which sometime include more than maintenance such as farming encroachment, ATV

trails, mowing (not for maintenance), equipment storage, structures, etc. BWSR, Corps and the TEP work with the sponsor during the Bank Plan review and establishment/monitoring period (usually the first five years after construction) to make sure that the site will be sustainable and not require much long-term maintenance.

2. If there is maintenance required, and a private party sells the credits, what happens to the wetland bank if that private party walks away when the credits are gone? Our understanding is if a private party sells the credits they're paying property taxes like any other land owner in Ham Lake whether it's wetland or dryland. Would the wetland go to tax forfeiture and go to the county? Who then would pay for the maintenance from there on out if that is the case?

Landowners can sell at anytime during their bank process. They could sell the land with the credits still available or after the credits are sold. Either way, the new landowner is responsible for complying with the terms of the Conservation Easement. Maintenance is the responsibility of the landowner and is enforceable by the Conservation Easement (CE). In rare cases, we have had to enforce non-compliance with easements through the state AG office. If a property were to go tax forfeit, the county would then be responsible for maintenance per the CE and Bank Plan. I'm not aware that this has happened before (I could ask Dennis) but usually when land is sold after the credits are gone it is sold as conservation/hunting land so there is a level of expectation up front for the land use.

3. Are there different types of wetland banks?

All banks are essentially the same, but their credits can be used for three different things. Agricultural bank credits are specific for farmers in a federal farm program. We don't see many, if any, of these in the metro area. The second type is State Road Credits. BWSR purchases the credits (not the land) for inclusion in the Road Program which is used to mitigate for those eligible safety improvements from local road authorities (city, township, county) that impact wetlands. The third type is private credits. This is the most common type of bank developed as they can then be sold on the open market for developers to replace for authorized wetland impacts both through the State Wetland Conservation Act and Federal Corps of Engineers permit. Current listings available here: <https://bwsr.state.mn.us/wetland-bank-credits-and-fees>

4. I've heard rumors Blaine has a wetland bank and part of the maintenance that is done are controlled burns. Are you aware of controlled burns being done for maintenance?

Maintenance activities are dictated by the Bank Plan. We have seen maintenance plans that call for adaptive management strategies that can include burning, mowing, haying, goats, cattle, spot spraying and others. Each site is different, and it also depends on the local municipality or fire department what can be allowed. The more urban/suburban a site is the more difficult it is to burn and manage smoke and avoid structures, etc. Most, if not all, native plant communities that developed in Anoka County were/are fire dependent, including our

oak savanna or forest uplands. The Blaine contractor used fire as a mechanism to “reset” the system by removing invasive vegetation, return soil nutrients and provide sunlight to many species that are state threatened and endangered that require frequent disturbance via burns. If done correctly, this is a good tool for maintenance of restored wetlands.

Ham Lake has one wetland bank that is in our city and to my knowledge all of the credits are sold. The Metropolitan Airport Commission (MAC) is the one who is in control of this land. Our staff has never seen or been informed of controlled burns, but the reason why I asked that question is a resident heard that happens in Blaine.

I looked at our database, and MAC still has 26.5 credits available to sell. My understanding is that they are holding onto these credits for airport projects and are not selling on the open market.

Thanks again for taking the time to answer some questions we have.

Thanks,
Brian