

CITY OF HAM LAKE

15544 Central Avenue NE
Ham Lake, Minnesota 55304
(763) 434-9555
Fax: (763) 434-9599

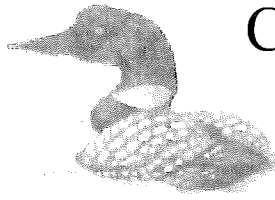
CITY OF HAM LAKE CITY COUNCIL AND ECONOMIC DEVELOPMENT AUTHORITY AGENDA MONDAY, JANUARY 3, 2022

- 1.0 CALL TO ORDER - 6:00 P.M. – Pledge of Allegiance**
- 2.0 PUBLIC COMMENT**
- 3.0 SPECIAL APPEARANCES/PUBLIC HEARINGS – None**
- 4.0 CONSENT AGENDA**

These items are considered to be routine and will be enacted in one motion. There will be no separate discussion of these items unless a Councilmember or citizen so requests, in which event the item will be removed from the Consent Agenda and considered in normal sequence. (All items listed on the Consent Agenda are recommended for approval.)

- 4.1 Approval of minutes of December 20, 2021
- 4.2 Approval of claims
- 4.3 Approval of accepting the resignation of Matthew Downing as the City Representative to the Sunrise River and Upper Rum River Watershed Management Organizations and advertising for the open positions in the *Ham Laker*
- 4.4 Approval of a Resolution scheduling a public hearing to vacate the 145th Avenue NE temporary cul-de-sac right-of-way within Hidden Forest East Second Addition
- 4.5 Approval of a Resolution authorizing transfer of all Ham Lake Development Company (HLDC) Loans and all unused CDBG Revolving Loans Funds to Anoka County
- 4.6 Approval of designation of appointment of representative and alternate to the Solid Waste Abatement Advisory Team (Jennifer Bohr and alternate Nicole Wheeler)
- 4.7 Approval of designation of official newspaper
- 4.8 Approval of designation of official depositories: 21st Century Bank, Falcon National Bank, RBC Capital Markets, PMA Financial Network/PMA Securities, Inc., Mortenson Capital Markets, LLC, and UBS Financial Services, Inc.

- 5.0 PLANNING COMMISSION RECOMMENDATIONS – None**
- 6.0 ECONOMIC DEVELOPMENT AUTHORITY – None**
- 7.0 APPEARANCES – None**
- 8.0 CITY ATTORNEY**
- 9.0 CITY ENGINEER**
- 10.0 CITY ADMINISTRATOR – None**
- 11.0 COUNCIL BUSINESS**
 - 11.1 Committee Reports
 - 11.2 Consideration of appointment of Acting Mayor, Committee liaisons and liaisons with other organizations: Acting Mayor, Personnel (2), Economic Development, Met Council (2), Law Enforcement (2), Fire Department Liaisons (2), North Central Suburban Cable Communications Commission (and alternate), Ham Lake Chamber of Commerce (2), Road Committee (2), *Ham Laker* Task Force (2), Audit (2), Building/Energy Committee (2), Park and Tree Liaison (2), Fire Relief Association Board of Trustees (3), Code Review Committee (2) (and alternate), Metropolitan Council reform effort Committee, Building Department Committee (2)
 - 11.3 Discussion of the American Rescue Plan Act (ARPA) Funding
 - 11.4 Discussion of the well located on Lot 4, Block 1, Harmony Estates 2nd Addition
 - 11.5 Announcements and future agenda items



CITY OF HAM LAKE

15544 Central Avenue NE
Ham Lake, Minnesota 55304
(763) 434-9555
Fax: (763) 434-9599

CITY OF HAM LAKE CITY COUNCIL AND ECONOMIC DEVELOPMENT AUTHORITY MINUTES MONDAY, DECEMBER 20, 2021

The Ham Lake City Council and Economic Development Authority met for its regular meeting on Monday, December 20, 2021 at 6:00 p.m. in the Council Chambers at the Ham Lake City Hall located at 15544 Central Avenue NE in Ham Lake, Minnesota.

MEMBERS PRESENT: Acting Mayor Gary Kirkeide and Councilmembers Jim Doyle, Brian Kirkham and Jesse Wilken

MEMBERS ABSENT: Mayor Mike Van Kirk

OTHERS PRESENT: City Attorney, Joe Murphy; City Engineer, Tom Collins; City Administrator, Denise Webster; and Deputy City Clerk, Dawnette Shimek

1.0 CALL TO ORDER - 6:00 P.M. – Pledge of Allegiance

Acting Mayor Kirkeide called the meeting to order and the Pledge of Allegiance was recited by all in attendance.

2.0 PUBLIC COMMENT - None

3.0 SPECIAL APPEARANCES/PUBLIC HEARINGS

3.1 Lt. Wilson, Anoka County Sheriff's Office Monthly Report

Lt. Wilson gave the Anoka County Sheriff's Office November, 2021 report.

4.0 CONSENT AGENDA

These items are considered to be routine and will be enacted in one motion. There will be no separate discussion of these items unless a Councilmember or citizen so requests, in which event the item will be removed from the Consent Agenda and considered in normal sequence. (All items listed on the Consent Agenda are recommended for approval.)

4.1 Approval of minutes of November 15, 2021

4.2 Approval of claims in the amount of \$426,121.97

4.3 Approval of Resolution No. 21-44 approving the Memorandum of Agreement (MOA) between the State of Minnesota and Local Governments and authorizing the participation in National Opioid Settlements

4.4 Approval of the following 2022 Business Licenses:

Hotel/Motel – Kevin Eggerth (Ham Lake Apartments), Oasis Life, LLC (AmericInn Ham Lake)

Motion by Kirkham, seconded by Doyle, to approve the December 20, 2021 Consent Agenda as written. All present in favor, motion carried.

5.0 PLANNING COMMISSION RECOMMENDATIONS

- 5.1 Jeff Entsminger, Entsminger Enterprises LLC, requesting Preliminary and Final Plat Approval, and rezoning of portions of Entsminger Farms from R-1 (Residential Single Family) to R-A (Rural Single Family Residential), of a 2 lot Minor Plat located in Section 29 (PID# 29-32-23-23-0010) (this is considered the First Reading of a Rezoning Ordinance)

Jeff Entsminger, Entsminger Enterprises LLC, was present. Mr. Entsminger stated that he is purchasing the property north of Coon Creek (currently owned by the Buchholz family) and will be combining a portion of the property to an existing lot and creating an additional lot west of the future road. Mr. Entsminger stated that the Buchholz family is keeping the property south of Coon Creek. **Motion by Kirkham, seconded by Wilken, to concur with the Planning Commission and approve the Preliminary Plat, Final Plat and rezoning of portions of Entsminger Farms from R-1 (Residential Single Family) to R-A (Rural Single Family Residential), of a 2 lot Minor Plat located in Section 29 (PID# 29-32-23-23-0010) contingent on a quit claim deed being recorded with Anoka County for the MSA roadway easement, the existing 1163 143rd Avenue NE driveway encroachments being relocated to outside of the drainage and utility easement and the existing septic system on Lot 2 being brought into compliance by October 18, 2023 (no building permits are to be issued, or rezoning approved, until the contingencies are completed), to recommend accepting monies in lieu of parkland for two lots in Section 29 with credit being given for land dedicated for the 20-foot bike trail easement south of Andover Boulevard NE, meeting the requirements of the City Engineer and meeting all City, State and County requirements. All present in favor, motion carried. (This is considered to be the first reading of a rezoning ordinance.)**

6.0 ECONOMIC DEVELOPMENT AUTHORITY – None

7.0 APPEARANCES – None

8.0 CITY ATTORNEY – None

9.0 CITY ENGINEER – None

10.0 CITY ADMINISTRATOR – None

11.0 COUNCIL BUSINESS

11.1 Committee Reports – None

11.2 Announcements and future agenda items

Motion by Kirkeide, seconded by Kirkham, to adjourn the meeting at 6:13 p.m. All present in favor, motion carried.

Dawnette Shimek, Deputy City Clerk

**CITY OF HAM LAKE
CLAIMS SUBMITTED TO COUNCIL
January 3, 2022**

CITY OF HAM LAKE

EFTS, CHECKS, AND BANK DRAFTS	12/23/21 - 1/5/22	
EFT	# 1584 - 1591	\$ 4,027.40
REFUND CKECKS	#63598 - 63603	\$ 20,950.00
CHECKS	# 63604 - 63633	\$ 323,673.44
BANK DRAFTS	DFT0002300 - DFT000203	\$ 25,831.38
TOTAL EFTS, CHECKS, AND BANK DRAFTS		<u>\$ 374,482.22</u>
PAYROLL CHECKS		
12/29/21		\$ 50,347.92
TOTAL PAYROLL CHECKS		<u>\$ 50,347.92</u>
TOTAL OF ALL PAYMENTS		<u><u>\$ 424,830.14</u></u>
VOID CHECKS		
CHECKS	#	\$ -
EFT	1582-1583	\$ -
		\$ -

APPROVED BY THE HAM LAKE CITY COUNCIL THIS 3RD DAY OF JANUARY 2022

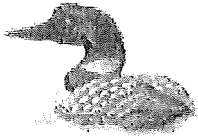
MAYOR

COUNCILMEMBER

COUNCILMEMBER

COUNCILMEMBER

COUNCILMEMBER



Packet: ARPKT00106 - 12/20/21 TRUST REFUNDS

Refund Detail

Account Number	Name	Check Date	Check Number	Amount
00063	LANG BUILDERS	12/22/2021	63598	2,500.00
00071	MATTHEW HOMES INC	12/22/2021	63599	2,500.00
00072	JH TRANSPORT CORP	12/22/2021	63600	2,500.00
00073	DAHLMEIER CONSTRUCTION	12/22/2021	63601	10,800.00
00087	BRIAN & LISA KOVAR	12/22/2021	63602	2,500.00
00134	TASHA BOREEN	12/22/2021	63603	150.00
Total Refund Amount:				20,950.00

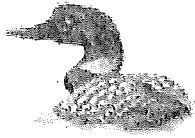
Revenue Totals

Revenue Code	Total Distribution
TRUST DEPOSITS - TRUST DEPOSITS	20,950.00
Revenue Totals:	20,950.00

General Ledger Distribution

Posting Date: 12/22/2021

Account Number	Account Name	Posting Amount	IFT
Fund: 890 - TRUST FUND			
890-10101	Cash-claim on pooled cash	-20,950.00	Yes
890-11501	Misc receivables	20,950.00	
	890 Total:	0.00	
Fund: 999 - POOLED CASH			
999-10100	Pooled Cash	-20,950.00	
999-20702	Due to other funds	20,950.00	Yes
	999 Total:	0.00	
	Distribution Total:	0.00	



Payment Dates 12/23/2021 - 1/5/2022

Payment Number	Vendor Name	Description (Item)	Account Name	Account Number	Amount
1584	ARAMARK UNIFORM & CAREE	PW UNIFORMS	Clothing & personal protectiv	100-43101-2210	113.60
1584	ARAMARK UNIFORM & CAREE	FIRST AID CABINET	Safety supplies	100-43101-2240	12.00
1585	CMT JANITORIAL SERVICES	SHERIFF'S OFFICE CLEANING	Cleaning service	100-41702-3430	130.00
1585	CMT JANITORIAL SERVICES	CITY HALL CLEANING	Cleaning service	100-41702-3430	520.00
1585	CMT JANITORIAL SERVICES	FIRE #1 CLEANING	Cleaning service	100-42202-3430	136.00
1585	CMT JANITORIAL SERVICES	FIRE #2 CLEANING	Cleaning service	100-42202-3430	128.00
1585	CMT JANITORIAL SERVICES	PW CLEANING	Cleaning service	100-43104-3430	125.00
1585	CMT JANITORIAL SERVICES	SR CENTER CLEANING	Cleaning service	100-44202-3430	254.00
1586	DELTA DENTAL PLAN OF MINN	JAN DK COBRA	COBRA receivable	100-11502	42.00
1586	DELTA DENTAL PLAN OF MINN	JAN DENTAL	Flexible spending	100-21705	999.90
1586	DELTA DENTAL PLAN OF MINN	DEC DENTAL TK	Flexible spending	100-21705	110.65
1587	ESO SOLUTIONS INC	FIREHOUSE SUPPORT 1/22	Prepaid expense	100-15501	58.83
1587	ESO SOLUTIONS INC	FIREHOUSE SUPPORT 8/21 - 1	Computer & software support	100-42201-3120	294.15
1588	MATTHEW DOWNING	7/1, 11/4 SRWMO MEETINGS	Advisory/representative	100-43201-1610	60.00
1588	MATTHEW DOWNING	6/24, 7/21, 7/22, 9/14, 11/9	Advisory/representative	100-43201-1610	150.00
1589	O'REILLY AUTOMOTIVE STORE	DIELECRIC GREASE	Operating supplies	100-43101-2290	13.99
1589	O'REILLY AUTOMOTIVE STORE	HEX BITS SETS	Small tools	100-44101-2410	49.98
1589	O'REILLY AUTOMOTIVE STORE	PRIMARY WIRE	Operating supplies	100-43101-2290	12.30
1590	WICK COMMUNICATIONS-LEA	HAM LAKER	Printing	211-41704-3970	635.00
1591	WRUCK SEWER & PORTABLE	LION'S PLAYGROUND RENTAL	Rentals-other	100-44101-3390	79.00
1591	WRUCK SEWER & PORTABLE	HAM LAKE BOAT LANDING TO	Rentals-other	100-44101-3390	79.00
1591	WRUCK SEWER & PORTABLE	OCT HL BOAT LANDING TOILE	Rentals-other	100-44101-3390	45.50
1591	WRUCK SEWER & PORTABLE	NOV HAM LAKE BOAT LANDIN	Rentals-other	100-44101-3390	45.50
1591	WRUCK SEWER & PORTABLE	OCT BOAT RENTAL & PLAYGR	Rentals-other	100-44101-3390	-158.00
1591	WRUCK SEWER & PORTABLE	OCT LION'S PLAYGROUND RE	Rentals-other	100-44101-3390	45.50
1591	WRUCK SEWER & PORTABLE	NOV LION'S PLAYGROUND RE	Rentals-other	100-44101-3390	45.50
63604	ASPEN MILLS INC	POLOS - MR	Clothing & personal protectiv	100-42201-2210	85.66
63605	D&D ANDERSON HEATING & P	VOID PERMIT 2021-05173 R#	Surcharge	100-22801	1.00
63605	D&D ANDERSON HEATING & P	VOID PERMIT 2021-05173 R#	Other construction permits	100-32202	180.00
63606	DEARBORN LIFE INS CO	JAN VOL LIFE	Other payroll deductions	100-21706	185.70
63606	DEARBORN LIFE INS CO	JAN LIFE	Other payroll deductions	100-21706	57.60
63607	DEHN OIL CO	151 GAL GASOLINE	Fuel	100-43101-2230	425.07
63607	DEHN OIL CO	705 GAL DIESEL	Fuel	100-43101-2230	1,854.15
63608	DO ALL PRINTING	HAM LAKER DELIVERY	Other services and charges	211-41704-3990	130.00
63609	EMBEDDED SYSTEMS INC	JAN - JUNE SIREN MAINTENA	Equipment repair & maintena	100-42302-3440	3,597.75
63610	EMERGENCY AUTOMOTIVE TE	#82 HIDEAWAY STROBES	Capital assets	428-42401-5110	198.36
63610	EMERGENCY AUTOMOTIVE TE	#84 HIDEAWAY STROBES	Capital assets	428-42401-5110	198.36
63610	EMERGENCY AUTOMOTIVE TE	#84 & #85 BRAKE LIGHTS	Capital assets	428-42401-5110	675.70
63610	EMERGENCY AUTOMOTIVE TE	#84 & #85 STROBES	Capital assets	428-42401-5110	860.72
63611	FIRE SAFETY USA INC	FIRE GLOVES	Clothing & personal protectiv	100-42201-2210	1,065.90
63611	FIRE SAFETY USA INC	FIRE GLOVES	Clothing & personal protectiv	100-42201-2210	981.90
63612	FLEETPRIDE	FILTERS	Operating supplies	100-43101-2290	14.54
63612	FLEETPRIDE	FILTERS	Operating supplies	100-43101-2290	35.06
63612	FLEETPRIDE	FILTER	Operating supplies	100-43101-2290	5.68
63612	FLEETPRIDE	#86 FILTERS	Vehicle parts & supplies	100-43101-2340	20.45
63612	FLEETPRIDE	#86 FILTER	Vehicle parts & supplies	100-43101-2340	38.94
63612	FLEETPRIDE	FILTERS	Operating supplies	100-43101-2290	13.46
63613	H & L MESABI INC	BLADE	Operating supplies	100-43102-2290	230.00
63614	IDEAL ADVERTISING	T-SHIRTS, SWEATSHIRTS, JACK	Clothing & personal protectiv	100-42401-2210	668.00
63615	INSPIRE ARCHITECTS	FIRE #3	Capital assets	420-42201-5110	10,033.33
63616	JIM KALLAS REPAIR	HONDA GENERATOR REPAIR	Equipment repair & maintena	100-42201-3440	47.08
63617	LANO EQUIPMENT, INC.	BRUSH MOWER PARTS	Equipment parts & supplies	100-43101-2320	61.14
63618	LITTLE FALLS MACHINE INC	WING NUT & BOLT	Operating supplies	100-43102-2290	237.41
63619	MENARDS-BLAINE	#97 PLUMBING PARTS FOR RI	Equipment parts & supplies	100-44101-2320	50.40

Council Approval List

Payment Dates: 12/23/2021 - 1/5/2022

Payment Number	Vendor Name	Description (Item)	Account Name	Account Number	Amount
63619	MENARDS-BLAINE	#97 PLUMBING FOR RINK FLO	Equipment parts & supplies	100-44101-2320	1.67
63620	MN STATE FIRE CHIEFS ASSN	2022 DUES - JG, MR, JT	Dues & subscriptions	100-42201-3920	220.00
63621	NCPERS GROUP LIFE INSURAN	JAN LIFE	Other payroll deductions	100-21706	112.00
63622	NEW BRIGHTON FORD	#82 LAMP (PW DAMAGED DU	Capital assets	428-42401-5110	521.73
63622	NEW BRIGHTON FORD	#82 FLOOR LINER	Capital assets	428-42401-5110	118.95
63623	QUADIENT FINANCE USA INC	POSTAGE	Postage	100-41701-2120	500.00
63624	RECYCLE TECHNOLOGIES INC	12/4/21 RECYCLE EVENT	Waste management & recycli	231-43601-3630	6,479.87
63625	SIGNS PLUS BANNERS	REFLECTIVE VINYL	Street signs	100-43401-2250	1,253.00
63626	SUNRISE RIVER WMO	SUNRISE RIVER WMO	Sunrise WMO	100-43201-3710	2,079.11
63627	TOWMASTER INC	NEW PLOW TRUCK	Capital assets	430-43101-5110	99,507.00
63628	UNLIMITED SUPPLIES INC	NUTS, BOLTS, WASHERS, FITTI	Operating supplies	100-43101-2290	188.12
63629	UPPER RUM RIVER WATERSHE	URRWMO	Upper Rum River WMO	100-43201-3720	1,173.47
63630	US POSTMASTER	POSTAGE 6629 x .168	Postage	211-41704-2120	1,113.67
63631	VERIZON WIRELESS	MR	Phones/radios/pagers	100-42201-3210	41.25
63631	VERIZON WIRELESS	TD, MJ, TK & 2 LAPTOPS	Phones/radios/pagers	100-42401-3210	208.77
63631	VERIZON WIRELESS	JK, JW,CH, CS, EH, & 2 LAPTOP	Phones/radios/pagers	100-43101-3210	294.26
63631	VERIZON WIRELESS	DH, AC	Phones/radios/pagers	100-44101-3210	82.50
63632	WELLS FARGO BANK N.A.	2010 CIP BOND PRINCIPAL	Principal	370-47101-6110	170,000.00
63632	WELLS FARGO BANK N.A.	2010 CIP BOND INTEREST	Interest	370-47101-6120	14,771.88
63633	US BANK CORPORATE PAYME	DEPT OF LABOR- DOL Bldg I	Prepaid expense	100-15501	65.00
63633	US BANK CORPORATE PAYME	REBATE	Refunds & reimbursements	100-37601	-145.45
63633	US BANK CORPORATE PAYME	PANTHEON SYSTEMS-new we	Computer & software support	100-41201-3120	50.00
63633	US BANK CORPORATE PAYME	ZOOM-Dec Zoom-DW	Dues & subscriptions	100-41201-3920	12.84
63633	US BANK CORPORATE PAYME	DLX FOR SMALL BUSINESS-20	Office supplies	100-41401-2110	70.98
63633	US BANK CORPORATE PAYME	AMAZON-desk name plate - A	Office supplies	100-41401-2110	11.38
63633	US BANK CORPORATE PAYME	IOS-PAPER-NW	Office supplies	100-41701-2110	77.32
63633	US BANK CORPORATE PAYME	AMAZON-receipt paper rolls f	Office supplies	100-41701-2110	39.70
63633	US BANK CORPORATE PAYME	AMAZON-SHREDED PAPER BA	Office supplies	100-41701-2110	29.97
63633	US BANK CORPORATE PAYME	AMAZON-receipt paper rolls,	Office supplies	100-41701-2110	34.86
63633	US BANK CORPORATE PAYME	AMAZON-returned receipt pa	Office supplies	100-41701-2110	-24.99
63633	US BANK CORPORATE PAYME	IOS-PAPER TOWELS-NW	Operating supplies	100-41701-2290	19.30
63633	US BANK CORPORATE PAYME	AMAZON-keyboard battery-N	Operating supplies	100-41701-2290	4.19
63633	US BANK CORPORATE PAYME	IOS-fire #1 & 2 toilet paper-N	Operating supplies	100-42201-2290	59.44
63633	US BANK CORPORATE PAYME	FERGUSON-HL FIRE WELL FLA	Equipment parts & supplies	100-42201-2320	94.42
63633	US BANK CORPORATE PAYME	CARHARTT-New insulated Bib	Clothing & personal protectiv	100-43101-2210	199.98
63633	US BANK CORPORATE PAYME	HOME DEPOT-New park/shop	Small tools	100-44101-2410	256.49
63633	US BANK CORPORATE PAYME	LOWES-new shop/parks tools-	Small tools	100-44101-2410	85.68
63633	US BANK CORPORATE PAYME	MN DVS-#82 CC FEE-JW	Capital assets	428-42401-5110	1.50
63633	US BANK CORPORATE PAYME	MN DVS-#82 REGISTRATION-J	Capital assets	428-42401-5110	61.25
63633	US BANK CORPORATE PAYME	SUMMIT RACING-#48, 49, 58	Capital assets	430-43101-5110	2,048.97
DFT0002300	EMPOWER	Deferred Compensation	Deferred compensation	100-21704	1,700.00
DFT0002300	EMPOWER	Roth IRA	Deferred compensation	100-21704	100.00
DFT0002301	IRS-Payroll Tax	Federal Withholding	Federal WH/FICA/MC	100-21701	4,723.03
DFT0002301	IRS-Payroll Tax	Medicare Payable	Federal WH/FICA/MC	100-21701	1,882.04
DFT0002301	IRS-Payroll Tax	Social Security Payable	Federal WH/FICA/MC	100-21701	7,552.76
DFT0002302	MN STATE DEPT OF REVENUE-	MN State Withholding	State W/H	100-21702	2,211.22
DFT0002303	PERA	Retirement-Coordinated	PERA	100-21703	6,566.16
DFT0002303	PERA	Retirement-Elected Officials	PERA	100-21703	40.84
DFT0002303	PERA	Retirement-Police & Fire	PERA	100-21703	1,055.33

Grand Total: 353,532.22

Report Summary

Fund Summary

Fund	Payment Amount
100 - GENERAL	46,175.93
211 - HAM LAKER	1,878.67
231 - RECYCLING	6,479.87
370 - 2010 CIP BOND DEBT	184,771.88
420 - FIRE EQUIPMENT	10,033.33
428 - BUILDING INSPECTION EQUIPMENT FUND	2,636.57
430 - PUBLIC WORKS EQUIPMENT	101,555.97
Grand Total:	353,532.22

Account Summary

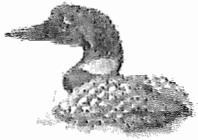
Account Number	Account Name	Payment Amount
100-11502	COBRA receivable	42.00
100-15501	Prepaid expense	123.83
100-21701	Federal WH/FICA/MC	14,157.83
100-21702	State W/H	2,211.22
100-21703	PERA	7,662.33
100-21704	Deferred compensation	1,800.00
100-21705	Flexible spending	1,110.55
100-21706	Other payroll deductions	355.30
100-22801	Surcharge	1.00
100-32202	Other construction per	180.00
100-37601	Refunds & reimburseme	-145.45
100-41201-3120	Computer & software su	50.00
100-41201-3920	Dues & subscriptions	12.84
100-41401-2110	Office supplies	82.36
100-41701-2110	Office supplies	156.86
100-41701-2120	Postage	500.00
100-41701-2290	Operating supplies	23.49
100-41702-3430	Cleaning service	650.00
100-42201-2210	Clothing & personal prot	2,133.46
100-42201-2290	Operating supplies	59.44
100-42201-2320	Equipment parts & suppl	94.42
100-42201-3120	Computer & software su	294.15
100-42201-3210	Phones/radios/pagers	41.25
100-42201-3440	Equipment repair & mai	47.08
100-42201-3920	Dues & subscriptions	220.00
100-42202-3430	Cleaning service	264.00
100-42302-3440	Equipment repair & mai	3,597.75
100-42401-2210	Clothing & personal prot	668.00
100-42401-3210	Phones/radios/pagers	208.77
100-43101-2210	Clothing & personal prot	313.58
100-43101-2230	Fuel	2,279.22
100-43101-2240	Safety supplies	12.00
100-43101-2290	Operating supplies	283.15
100-43101-2320	Equipment parts & suppl	61.14
100-43101-2340	Vehicle parts & supplies	59.39
100-43101-3210	Phones/radios/pagers	294.26
100-43102-2290	Operating supplies	467.41
100-43104-3430	Cleaning service	125.00
100-43201-1610	Advisory/representative	210.00
100-43201-3710	Sunrise WMO	2,079.11
100-43201-3720	Upper Rum River WMO	1,173.47
100-43401-2250	Street signs	1,253.00
100-44101-2320	Equipment parts & suppl	52.07
100-44101-2410	Small tools	392.15
100-44101-3210	Phones/radios/pagers	82.50
100-44101-3390	Rentals-other	182.00

Account Summary

Account Number	Account Name	Payment Amount
100-44202-3430	Cleaning service	254.00
211-41704-2120	Postage	1,113.67
211-41704-3970	Printing	635.00
211-41704-3990	Other services and charg	130.00
231-43601-3630	Waste management & r	6,479.87
370-47101-6110	Principal	170,000.00
370-47101-6120	Interest	14,771.88
420-42201-5110	Capital assets	10,033.33
428-42401-5110	Capital assets	2,636.57
430-43101-5110	Capital assets	101,555.97
	Grand Total:	353,532.22

Project Account Summary

Project Account Key	Payment Amount
None	345,173.68
231003030	765.00
231003031	1,113.67
231007001	6,479.87
	Grand Total:
	353,532.22



City of Ham Lake, MN

EFT Payroll Check Register Report Summary

Pay Period: 12/12/2021-12/25/2021

Packet: PYPKT01238 - PPE 12/25/21 PAID 12/29/21

Payroll Set: City of Ham Lake - 01

Type	Count	Amount
Regular Checks	0	0.00
Manual Checks	0	0.00
Reversals	0	0.00
Voided Checks	0	0.00
Direct Deposits	71	50,347.92
Total	71	50,347.92

Denise Webster

From: Matthew Downing <matthewdowning108@gmail.com>
Sent: Wednesday, December 22, 2021 9:39 AM
To: John West; Leon Mager (lamj3@outlook.com); Mike Van Kirk; Lisa Fobbe
Cc: Jamie Schurbon; Denise Webster; Determan, Tiffany - NRCS-CD, Cambridge, MN
Subject: WMO Representative Resignation

Caution: This email originated outside our organization; please use caution.

Mayor Van Kirk, Chair West, Chair Fobbe and Acting Chair Mager,

With regrets I am writing to you today to submit my resignation as the City of Ham Lake rep to the Sunrise and Upper Rum River WMO Boards. I also must resign as the Vice Chair of the Rum River 1W1P Policy Committee as the URRWMO Rep. I have had a number of life changes occur in the last few months that will no longer allow me to serve my community in this capacity. Please consider my resignation effective Jan 1 2022.

Mayor Van Kirk, please extend my thanks to the entire City Council for the faith you all put in me to represent my community and for the opportunity to serve as a public servant.

Chair West and Mager, it has truly been a pleasure working with you the last few years. I am proud of the progress we made in both organizations and have full faith that you will continue moving forward as good stewards of the resources of the communities we serve.

Chair Fobbe, I apologize for leaving the planning effort as we near the finish line but would like to extend my admiration for the leadership you have shown in this effort. I am also appreciative of the faith you put in me to help guide that effort.

Thank you all for the work you continue to do, and for the experience that you afforded me during this appointment.

Wishing you a happy holiday season,

Matthew Downing

Meeting Date: January 3, 2022



**CITY OF HAM LAKE
STAFF REPORT**

To: Mayor and Councilmembers

From: Dawnette Shimek, Deputy City Clerk

Item/Title/Subject: Vacation of the 145th Avenue NE temporary cul-de-sac right-of-way within Hidden Forest East Second Addition

Introduction/Discussion:

A temporary cul-de-sac was constructed on 145th Avenue NE when Hidden Forest East Second Addition was platted. Hidden Forest Third Addition is connecting to the East and the right-of-way and temporary cul-de-sac is no longer needed and therefore needs to be vacated. Engineer Collins has reviewed the legal description and has no issue with this vacation.

Recommendation:

I recommend approval of a Resolution scheduling a Public Hearing for December 20, 2021 to vacate the 145th Avenue NE temporary cul-de-sac right-of-way within Hidden Forest East Second Addition.

RESOLUTION NO. 22-XX

WHEREAS, the Ham Lake City Council, on its own motion, wishes to consider the vacation of the following described land in the City of Ham Lake, pursuant to Minnesota Statutes Chapter 412.851:

PARCEL A:

That part of 145th Avenue NE as platted and dedicated on the plat of HIDDEN FOREST EAST SECOND ADDITION, Anoka County, Minnesota, which lies northeasterly of a line hereafter known as "Line A", said line being described as beginning at the most northerly corner of Lot 22, Block 1, of said HIDDEN FOREST EAST SECOND ADDITION; thence southeasterly along the easterly line of said Lot 22 and its southeasterly extension, a distance of 633.56 feet to the angle point on the northeasterly line of Lot 7, Block 3, said HIDDEN FOREST EAST SECOND ADDITION and said line there terminating; and which also lies northwesterly of a line drawn 33 feet northwesterly as measured at a right angle and parallel to a line hereafter known as "Line B", said line being described as beginning at the point of intersection between the previously described "Line A" and the centerline of 145th Avenue NE as platted and dedicated on said plat of HIDDEN FOREST EAST SECOND ADDITION; thence northeasterly along the centerline of 145th Avenue NE and its northeasterly extension a distance of 84.04 feet; thence 15.96 feet along a tangential curve concave to the northwest, said curve having a radius of 700.00 feet and a central angle of 01 degrees 18 minutes 23 seconds and said line there terminating.

PARCEL B:

That part of 145th Avenue NE as platted and dedicated on the plat of HIDDEN FOREST EAST SECOND ADDITION, Anoka County, Minnesota, which lies northeasterly of a line hereafter known as "Line A", said line being described as beginning at the most northerly corner of Lot 22, Block 1, of said HIDDEN FOREST EAST SECOND ADDITION; thence southeasterly along the easterly line of said Lot 22 and its southeasterly extension, a distance of 633.56 feet to the angle point on the northeasterly line of Lot 7, Block 3, said HIDDEN FOREST EAST SECOND ADDITION and said line there terminating; and which also lies southeasterly of a line drawn 33 feet southeasterly as measured at a right angle and parallel to a line hereafter known as "Line B", said line being described as beginning at the point of intersection between the previously described "Line A" and the centerline of 145th Avenue NE as platted and dedicated on said plat of HIDDEN FOREST EAST SECOND ADDITION; thence northeasterly along the centerline of 145th Avenue NE and its northeasterly extension a distance of 84.04 feet; thence 15.96 feet along a tangential curve concave to the northwest, said curve having a radius of 700.00 feet and a central angle of 01 degrees 18 minutes 23 seconds and said line there terminating.

PARCEL C

That part of 145th Avenue NE as platted and dedicated on the plat of HIDDEN FOREST EAST SECOND ADDITION, Anoka County, Minnesota, which lies adjacent to Lot 22, Block 1, said HIDDEN FOREST EAST SECOND ADDITION, which lies southwesterly of the southeasterly extension of the northeasterly line of said Lot 22, Block 1, and which lies northwesterly of a line drawn 33 feet northwesterly as measured at a right angle and parallel with the centerline of said 145th Avenue.

PARCEL D

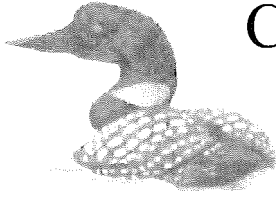
That part of 145th Avenue NE as platted and dedicated on the plat of HIDDEN FOREST EAST SECOND ADDITION, Anoka County, Minnesota, which lies adjacent to Lot 7, Block 3, said HIDDEN FOREST EAST SECOND ADDITION, which lies southwesterly of the northwesterly extension of the northeasterly line of said Lot 7, Block 3, and which lies southeasterly of a line drawn 33 feet southeasterly as measured at a right angle and parallel with the centerline of said 145th Avenue.

NOW, THEREFORE, BE IT RESOLVED by the City Council of the City of Ham Lake, that the City Clerk is directed to post in a conspicuous place in the City Hall between the dates of January 4, 2022 and January 18, 2022, and to cause publication of a NOTICE OF PUBLIC HEARING, a copy of which is attached to this Resolution, for a public hearing to be held on January 18, 2022, with publication to occur in the Star Tribune on January 6, 2022.

Adopted by the City Council of the City of Ham Lake this 3rd day of January, 2022.

Michael G. Van Kirk, Mayor

Dawnette Shimek, Deputy City Clerk



CITY OF HAM LAKE

15544 Central Avenue NE
Ham Lake, Minnesota 55304
(763) 434-9555
Fax: (763) 434-9599

NOTICE OF PUBLIC HEARING VACATION OF PUBLIC LAND

NOTICE IS HEREBY GIVEN, that a Public Hearing will be held before the Ham Lake City Council January 18, 2022 at 6:01 p.m. in the City Council Chambers, City Hall, 15544 Central Avenue NE, Ham Lake, Minnesota 55304, to hear comments and questions concerning the proposed vacation of the following described land within the City of Ham Lake, Minnesota:

PARCEL A:

That part of 145th Avenue NE as platted and dedicated on the plat of HIDDEN FOREST EAST SECOND ADDITION, Anoka County, Minnesota, which lies northeasterly of a line hereafter known as "Line A", said line being described as beginning at the most northerly corner of Lot 22, Block 1, of said HIDDEN FOREST EAST SECOND ADDITION; thence southeasterly along the easterly line of said Lot 22 and its southeasterly extension, a distance of 633.56 feet to the angle point on the northeasterly line of Lot 7, Block 3, said HIDDEN FOREST EAST SECOND ADDITION and said line there terminating; and which also lies northwesterly of a line drawn 33 feet northwesterly as measured at a right angle and parallel to a line hereafter known as "Line B", said line being described as beginning at the point of intersection between the previously described "Line A" and the centerline of 145th Avenue NE as platted and dedicated on said plat of HIDDEN FOREST EAST SECOND ADDITION; thence northeasterly along the centerline of 145th Avenue NE and its northeasterly extension a distance of 84.04 feet; thence 15.96 feet along a tangential curve concave to the northwest, said curve having a radius of 700.00 feet and a central angle of 01 degrees 18 minutes 23 seconds and said line there terminating.

PARCEL B:

That part of 145th Avenue NE as platted and dedicated on the plat of HIDDEN FOREST EAST SECOND ADDITION, Anoka County, Minnesota, which lies northeasterly of a line hereafter known as "Line A", said line being described as beginning at the most northerly corner of Lot 22, Block 1, of said HIDDEN FOREST EAST SECOND ADDITION; thence southeasterly along the easterly line of said Lot 22 and its southeasterly extension, a distance of 633.56 feet to the angle point on the northeasterly line of Lot 7, Block 3, said HIDDEN FOREST EAST SECOND ADDITION and said line there terminating; and which also lies southeasterly of a line drawn 33 feet southeasterly as measured at a right angle and parallel to a line hereafter known as "Line B", said line being described as beginning at the point of intersection between the previously described "Line A" and the centerline of 145th Avenue NE as platted and dedicated on said plat of HIDDEN FOREST EAST SECOND ADDITION; thence northeasterly along the centerline of 145th Avenue NE and its northeasterly extension a distance of 84.04 feet; thence 15.96 feet along a tangential curve concave to the northwest, said curve having a radius of 700.00 feet and a central angle of 01 degrees 18 minutes 23 seconds and said line there terminating.

PARCEL C

That part of 145th Avenue NE as platted and dedicated on the plat of HIDDEN FOREST EAST SECOND ADDITION, Anoka County, Minnesota, which lies adjacent to Lot 22, Block 1, said HIDDEN FOREST EAST SECOND ADDITION, which lies southwesterly of the southeasterly extension of the northeasterly line of said Lot 22, Block 1, and which lies northwesterly of a line drawn 33 feet northwesterly as measured at a right angle and parallel with the centerline of said 145th Avenue.

PARCEL D

That part of 145th Avenue NE as platted and dedicated on the plat of HIDDEN FOREST EAST SECOND ADDITION, Anoka County, Minnesota, which lies adjacent to Lot 7, Block 3, said HIDDEN FOREST EAST SECOND ADDITION, which lies southwesterly of the northwesterly extension of the northeasterly line of said Lot 7, Block 3, and which lies southeasterly of a line drawn 33 feet southeasterly as measured at a right angle and parallel with the centerline of said 145th Avenue.

Said hearing is conducted pursuant to Minnesota Statutes Chapter 412.851.

Dated: January 6, 2022

Dawnette Shimek, Deputy City Clerk

Posted at City Hall between the dates of January 4, 2022 and January 18, 2022

Published in the Star Tribune on January 6, 2022.

SKETCH AND DESCRIPTION

~for~ HFN PROPERTIES
~of~ 145th Avenue Vacation

RIGHT-OF-WAY VACATION DESCRIPTIONS

PARCEL A:

That part of 145th Avenue NE as platted and dedicated on the plat of HIDDEN FOREST EAST SECOND ADDITION, Anoka County, Minnesota, which lies northeasterly of a line hereafter known as "Line A", said line being described as beginning at the most northerly corner of Lot 22, Block 1, of said HIDDEN FOREST EAST SECOND ADDITION; thence southeasterly along the easterly line of said Lot 22 and its southeasterly extension, a distance of 633.56 feet to the angle point on the northeasterly line of Lot 7, Block 3, said HIDDEN FOREST EAST SECOND ADDITION and said line there terminating; and which also lies northwesterly of a line drawn 33 feet northwesterly as measured at a right angle and parallel to a line hereafter known as "Line B", said line being described as beginning at the point of intersection between the previously described "Line A" and the centerline of 145th Avenue NE as platted and dedicated on said plat of HIDDEN FOREST EAST SECOND ADDITION; thence northeasterly along the centerline of 145th Avenue NE and its northeasterly extension a distance of 84.04 feet; thence 15.96 feet along a tangential curve concave to the northwest, said curve having a radius of 700.00 feet and a central angle of 01 degrees 18 minutes 23 seconds and said line there terminating.

PARCEL B:

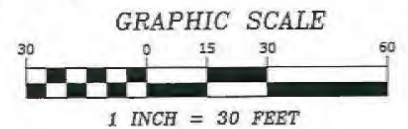
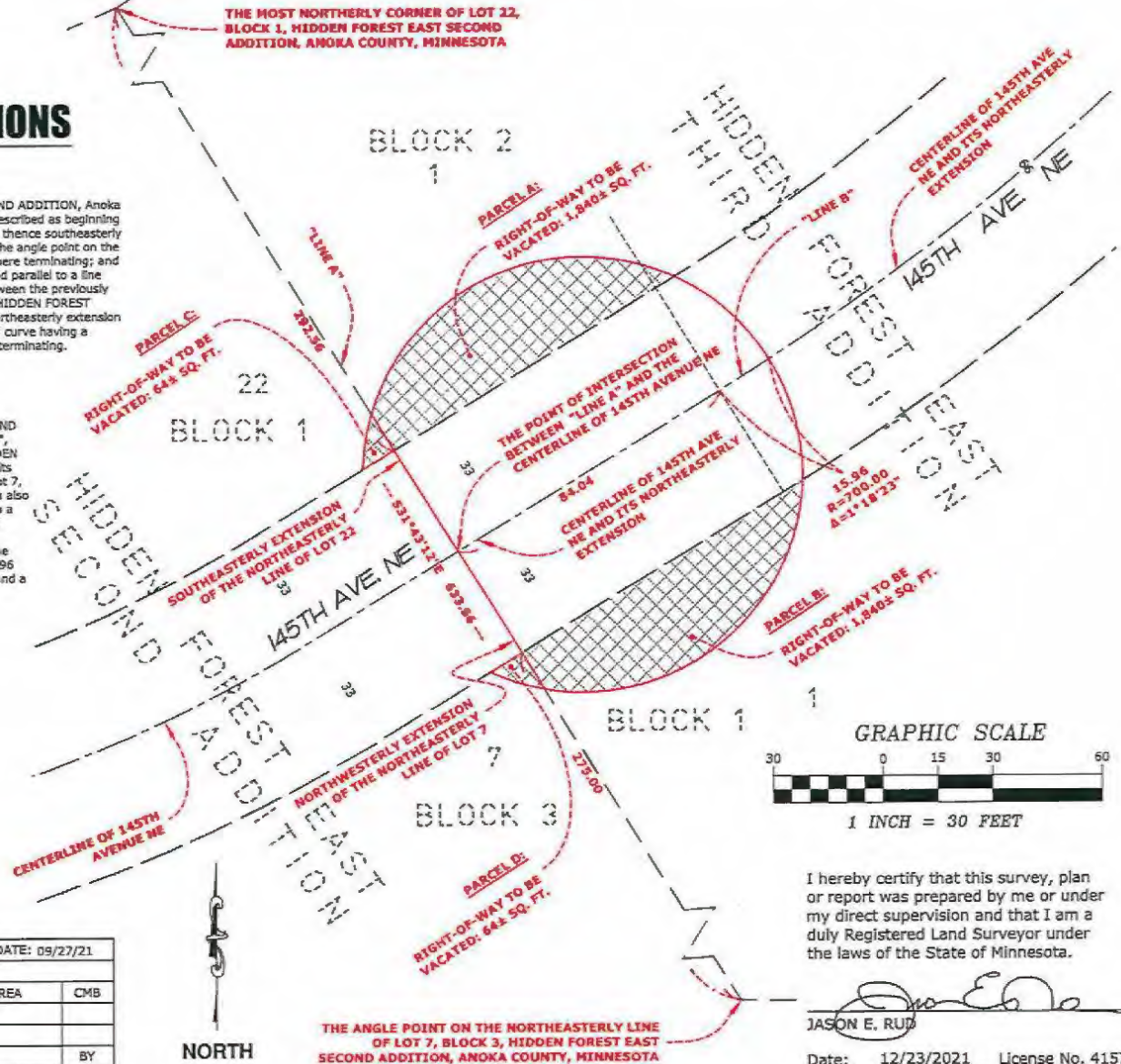
That part of 145th Avenue NE as platted and dedicated on the plat of HIDDEN FOREST EAST SECOND ADDITION, Anoka County, Minnesota, which lies northeasterly of a line hereafter known as "Line A", said line being described as beginning at the most northerly corner of Lot 22, Block 1, of said HIDDEN FOREST EAST SECOND ADDITION; thence southeasterly along the easterly line of said Lot 22 and its southeasterly extension, a distance of 633.56 feet to the angle point on the northeasterly line of Lot 7, Block 3, said HIDDEN FOREST EAST SECOND ADDITION and said line there terminating; and which also lies southeasterly of a line drawn 33 feet southeasterly as measured at a right angle and parallel to a line hereafter known as "Line B", said line being described as beginning at the point of intersection between the previously described "Line A" and the centerline of 145th Avenue NE as platted and dedicated on said plat of HIDDEN FOREST EAST SECOND ADDITION; thence northeasterly along the centerline of 145th Avenue NE and its northeasterly extension a distance of 84.04 feet; thence 15.96 feet along a tangential curve concave to the northwest, said curve having a radius of 700.00 feet and a central angle of 01 degrees 18 minutes 23 seconds and said line there terminating.

PARCEL C:

That part of 145th Avenue NE as platted and dedicated on the plat of HIDDEN FOREST EAST SECOND ADDITION, Anoka County, Minnesota, which lies adjacent to Lot 22, Block 1, said HIDDEN FOREST EAST SECOND ADDITION, which lies southwesterly of the southeasterly extension of the northeasterly line of said Lot 22, Block 1, and which lies northwesterly of a line drawn 33 feet northwesterly as measured at a right angle and parallel with the centerline of said 145th Avenue.

PARCEL D:

That part of 145th Avenue NE as platted and dedicated on the plat of HIDDEN FOREST EAST SECOND ADDITION, Anoka County, Minnesota, which lies adjacent to Lot 7, Block 3, said HIDDEN FOREST EAST SECOND ADDITION, which lies southwesterly of the northwesterly extension of the northeasterly line of said Lot 7, Block 3, and which lies southeasterly of a line drawn 33 feet southeasterly as measured at a right angle and parallel with the centerline of said 145th Avenue.



I hereby certify that this survey, plan or report was prepared by me or under my direct supervision and that I am a duly Registered Land Surveyor under the laws of the State of Minnesota.

Jason E. Rud
JASON E. RUD

Date: 12/23/2021 License No. 41578

DRAWN BY: CMB		JOB NO: 200949PP		DATE: 09/27/21	
CHECK BY: JER		FIELD CREW: N/A			
1	12-21-21	ADJUST VACATION AREA	CMB		
2					
3					
NO.	DATE	DESCRIPTION		BY	

E. G. RUD & SONS, INC.
Professional Land Surveyors
6776 Lake Drive NE, Suite 110
Lino Lakes, MN 55014
Tel. (651) 351-8200 Fax (651) 351-8701
www.egrud.com

CITY OF HAM LAKE, MINNESOTA

RESOLUTION NO. 22-XX

**AUTHORIZING TRANSFER OF ALL HAM LAKE DEVELOPMENT COMPANY
(HLDC) LOANS AND ALL UNUSED CDBG REVOLVING LOAN FUNDS
TO ANOKA COUNTY**

WHEREAS, the City has utilized Community Development Block Grant (CDBG) funds from Anoka County for a number of years to establish a business revolving loan fund; and

WHEREAS, the Ham Lake Development Company (HLDC) was formed by the City to review and administer CDBG business loans and mortgages, collect payments, manage funds, and monitor compliance of the revolving loan program in an effort to provide opportunities to local businesses; and

WHEREAS, the City has determined that the financial and program requirements have limited the practical appeal of this loan program, and has determined the loan program would be more efficiently administered and promoted by a countywide program, which the County recently established; and

WHEREAS, the County's proposed countywide revolving loan program will benefit all cities within Anoka County by promoting local business and economic development; and

WHEREAS, to enable Anoka County to assume collection of the active loan files and to transfer all unused revolving funds to the countywide program, the City and HLDC concurrently agree to return all CDBG receivables and cash assets managed by the HLDC to Anoka County; and

WHEREAS, the City and HLDC agree to execute all necessary assignments or other documentation required by Anoka County to assume the HLDC loan portfolio.

NOW, THEREFORE, BE IT RESOLVED, by the Ham Lake City Council that the unused CDBG funds as well as the existing HLDC loan portfolio shall be returned to Anoka County and that the Mayor and City Manager are hereby authorized to execute any and all documents necessary to accomplish the transfer of funds and assignment of any outstanding loans to Anoka County.

Adopted by a unanimous vote of the City Council this 3rd day of January, 2022.

Michael G. Van Kirk, Mayor

Dawnette Shimek, Deputy City Clerk

Motion by Johnson, seconded by Parranto, to approve Item 4.1, the minutes of July 5, 2016. Mayor Van Kirk and Councilmembers Johnson, Parranto and Kirkeide voted yes. Councilmember Doyle abstained. Motion carried.

5.0 PLANNING COMMISSION RECOMMENDATIONS

5.1 Consideration of adopting Emergency Ordinance No. 16-07 Opting-Out of the Requirements of Minnesota Statutes, Section 462.3593 regarding Temporary Family Health Care Dwellings

Motion by Van Kirk, seconded by Johnson, to concur with the recommendation of the Planning Commission and adopt Emergency Ordinance No. 16-07 Opting-Out of the Requirements of Minnesota Statutes Section 462.3593 regarding Temporary Health Care Dwellings. All in favor, motion carried.

5.2 Stone Construction requesting site plan approval to construct Ham Lake Professional Building at Lot 1, Block 3, Stone Estates (13352 Aberdeen Street NE)

Motion by Doyle, seconded by Parranto, to concur with the recommendation of the Planning Commission and approve the site plan submitted by Stone Construction to construct Ham Lake Professional Building at Lot 1, Block 3, Stone Estates (13352 Aberdeen Street NE), subject to meeting the recommendations of the City Engineer and all State, County and City requirements. All in favor, motion carried.

5.3 Fitaholic Fitness requesting to occupy and operate at 13352 Aberdeen Street NE

Motion by Johnson, seconded by Doyle, to concur with the recommendation of the Planning Commission and approve the request of Damion Meyer to operate Fitaholic Fitness at 13352 Aberdeen Street NE, Suites C and D (Lot 1, Block 3, Stone Estates) as presented, subject designating 40 parking spaces and to meeting all City, State and County requirements. All in favor, motion carried.

6.0 PARK AND TREE COMMISSION RECOMMENDATIONS – None

7.0 ECONOMIC DEVELOPMENT AUTHORITY – None

8.0 APPEARANCES – None

9.0 CITY ATTORNEY – None

10.0 CITY ENGINEER – None

11.0 FIRE CHIEF

Fire Chief Krueger stated that Mayor Van Kirk questioned if a gazebo counted as a structure towards the maximum square footage of an accessory building. Fire Chief Krueger stated that it does not.

12.0 COUNCIL BUSINESS

12.1 Committee Reports - None

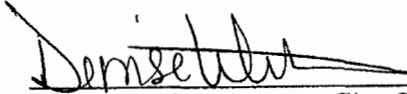
12.2 Update on the Ham Lake Economic Development Revolving Loan Fund Program

Fire Chief Krueger stated that Council requested a letter from the Ham Lake Development Company (HLDC) stating that they would like to start the transitioning of the Ham Lake

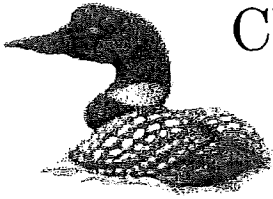
Economic Developing Revolving Loan Fund Program over to Anoka County. Fire Chief Krueger stated that Nancy Braastad, President of the HLDC provided the requested letter. **Motion by Van Kirk, seconded by Kirkeide, to direct staff to notify Karen Skepper, Director of Community and Government Relations, that the City would like to start the transitioning process of the Ham Lake Economic Development Revolving Loan Fund Program over to Anoka County. All in favor, motion carried.**

12.3 Announcements and future agenda items – None

Motion by Kirkeide, seconded by Parranto, to adjourn the meeting at 6:32 p.m. All in favor, motion carried.



Denise Webster, City Clerk



CITY OF HAM LAKE

15544 Central Avenue NE
Ham Lake, Minnesota 55304
(763) 434-9555
Fax: (763) 434-9599

July 19, 2016

Karen Skepper
Director of Community and Government Relations
Anoka County Government Center
2100 3rd Ave.
Anoka, MN 55303

Dear Ms. Skepper,

At their meeting last night, the City Council has decided to start the process of transitioning the Ham Lake Economic Development Revolving Loan Fund Program from the Ham Lake Development Company (HLDC) to Anoka County.

Please let me know what the next steps would be to start the process.

Sincerely,

A handwritten signature in black ink that reads "Don Krueger". The signature is written in a cursive style with a long horizontal line extending to the right.

Don Krueger
Fire Chief

Meeting Date: January 3, 2022

CITY OF HAM LAKE

STAFF REPORT

To: Mayor and Councilmembers

From: Denise Webster, City Administrator

Subject: Solid Waste Abatement Advisory Team

Introduction/Discussion:

Every year the City Council approves the designation of appointment of a representative and alternate to the Solid Waste Abatement Advisory Team.

Recommendation:

I recommend approval of Jennifer Bohr as the representative and Nicole Wheeler as the alternate to the Solid Waste Abatement Advisory Team.

Meeting Date: January 3, 2021

CITY OF HAM LAKE
STAFF REPORT

To: Mayor and Councilmembers

From: Dawnette Shimek, Deputy City Clerk

Subject: Official Newspaper

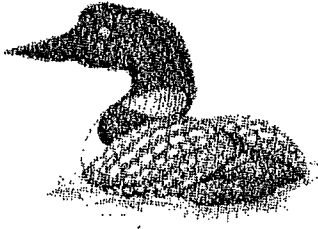
Introduction/Discussion:

We have received quotes from the StarTribune and the Anoka County UnionHerald. Staff has found that working with the Star Tribune has been a benefit regarding legal publications being they publish seven days a week versus the Anoka County UnionHerald publishing once a week. This allows staff to more efficiently meet the requirements per State Statute regarding legal publications.

Recommendation:

I recommend continuing with the Star Tribune as the designated legal newspaper for the City of Ham Lake publications for 2022.

Meeting Date: January 3, 2022



CITY OF HAM LAKE

Staff Report

To: Mayor and Councilmembers
Denise Webster, City Administrator

From: Andrea Worcester, Finance Director

Subject: Official Depositories for 2022

Introduction/Discussion:

The City is required by State Statutes to designate official depositories for investments at the first meeting of the year.

There will be an addition of two investment firms, Mortenson Capital Markets and UBS Financial Services. These two firms specialize in long-term investments and will offer us some additional options to help better diversify City Investments.

Recommendations:

I recommend that 21st Century Bank, Falcon National Bank, RBC Capital Markets, PMA Financial Network/PMA Securities, Inc., Mortenson Capital Markets, LLC, and UBS Financial Services, INC., be named the official depositories for the City's funds for 2022.

Previous Committee Appointments from 2021

Acting Mayor (1).....Councilmember Kirkeide

EDA President (1).....Mayor Van Kirk

EDA Vice President (1).....Councilmember Kirkham

Personnel (2).....Mayor Van Kirk & Councilmember Doyle

Economic Development (2).....Mayor Van Kirk & Councilmember Kirkham

Met Council & Metropolitan Council reform effort Committee (2).....Councilmembers Kirkeide and Kirkham

Law Enforcement (2).....Mayor Van Kirk and Councilmember Wilken

Fire Department Liaisons (2).....Mayor Van Kirk & Councilmember Kirkham

North Metro Telecommunications Commission (1).....Councilmember Kirkham (alternate: Mayor Van Kirk)

Chamber of Commerce (2).....Councilmember Kirkham & City Administrator Webster

Road Committee (2).....Councilmembers Kirkeide & Doyle

Ham Laker Task Force (2).....Mayor Van Kirk & Councilmember Wilken

Audit (2).....Councilmembers Doyle & Wilken

Building/Energy Committee (2).....Mayor Van Kirk & Councilmembers Kirkeide

Park Committee (2).....Councilmembers Kirkham & Wilken

Fire Relief Association Board of Trustees (3).....Councilmember Kirkham, Fire Chief Raczkowski & City Administrator Webster

Code Review Committee (2).....Mayor Van Kirk and Councilmember Kirkeide (alternate: Councilmember Kirkham)

Building Department Committee (2).....Mayor Van Kirk and Councilmember Kirkeide

CERT Committee.....Mayor Van Kirk, Councilmember Wilken, Fire Chief Raczkowski, Al Parranto & Liaison from the Sheriff's Department



WELL DRILLING FOR FIVE GENERATIONS
15688 JARVIS STREET N.W. / ELK RIVER, MN 55330

PHONE: (763) 427-6100 / FAX: (763) 427-0533
www.ehrenner.com

16 August 2021

City of HAM LAKE FIRE DEPT.

ATTN: Mike Raczkowski
Fire Chief

SUBJECT: HOGDAL FARM WELL

Dear Chief Raczkowski,

ATTACHED is our estimate to redevelop the Hogdal Farm irrigation well to service the needs for water in the more remote area of Ham Lake. This well currently has a line shaft turbine pump in it. The pump is a 75hp with an across the line starter. This pump is used for high pressure irrigation. Your needs are for a bit low flow and very low pressure.

This existing line shaft turbine is oil lubricated and not water lubricated. This turbine pump may have over the past few decades, injected oil into the well. The amount of oil is estimated to be in the 100's of gallons.

This oil must be removed and the well cleaned up before a new pump is installed.

Mn Department of Health is also requiring the Mt. Simon formation be sealed off as this well is a multi-aquifer well. The Tunnel City and Wonewoc formations are open to the Mt. Simon. It will be required to clear the well back down to 555 feet and grout the bottom up above the Eau Claire Shales.

The exact location of these formations will require the well to be gamma logged and should be video logged to assure there are no holes in the casing.

Since the locations and conditions of this well are not really known at this time, it is hard to pump an exact cost on the finished product. We recommend performing Tasks 1-4 to determine if you want to complete this well as a water source or seal the well entirely.

I am open to a sit down meeting with you at City Hall to go over this estimate to assure you have a grasp of the entire financial costs to this project.

Sincerely,



Roger E. Renner, President

Chair Mn Department of Health
Advisory Council on Wells and Borings
NGWA FELLOW 2016
NGWA PRESIDENT 2001
MWVA PRESIDENT 1990
E.H. RENNER & SONS, INC.
MINNESOTA LICENSE #1431
763.427.6100 w, 763.286.9355 c



rerenner@ehrenner.com



NGWA-CERTIFIED

Master Ground Water Contractor

CITY OF HAM LAKE FIRE DEPT
HOGDAL FARM IRRIGATION WELL
2642 WESTLUND DR
ANOKA, MN 55303

8/15/2021

DATE Roger E. Renner Pres.

ATTN: Mike Raczkowski, Fire Chief
(763) 434-9555

DATE

RE: ESTIMATE for redevelopment, new pump, controls: well Unique #107242
2727 154th Lane Ne, Ham Lake, MN 55304

WORK TASKS
Remove existing pump from well & dispose of it.
Ball residual line shaft turbine oil from well & barrel up for disposal
Air lift and wire brush well clean
Video Log and gamma log well
Install new pump/motor, drop pipe, subcable, MAASS 10J4 pitless, new well cap
Raise well casing 3ft to meet well code.
Furnish & install new VFD controller

DESCRIPTION	Est #	UNITS	UNIT PRICE	TOTAL EST. EXTENSION
DAY #1 - remove existing oil-lub line shaft turbine pump				
Trip charge to/from site	1.00	L.S.	\$ 150.00	\$ 150.00
SMEAL pump hoist	6.00	hrs	\$ 155.00	\$ 930.00
Operator	8.00	hrs	\$ 125.00	\$ 1,000.00
Helper	8.00	hrs	\$ 105.00	\$ 840.00
Support truck	1.00	day	\$ 95.00	\$ 95.00
Oil containment, tyvek suits, gloves, poly sheeting decon	1.00	L.S.	\$ 600.00	\$ 600.00
Shop time & pressure washer	1.00	HR	\$ 100.00	\$ 100.00
DAY #2 - Remove oil from well				
Trip charge to/from site	1.00	trip	\$ 150.00	\$ 150.00
SMEAL PUMP HOIST	4.00	hrs	\$ 155.00	\$ 620.00
S9A type 55 gallon barrels with locking lids	5.00	ea	\$ 60.00	\$ 300.00
Operator	5.00	hrs	\$ 125.00	\$ 625.00
Helper	5.00	hrs	\$ 105.00	\$ 525.00
Support truck	1.00	day	\$ 95.00	\$ 95.00
Oil Disposal fee	1.00	L.S.	\$ 600.00	\$ 600.00

\$ 3,715.00

\$ 2,915.00

DAY #3 - air lift and wire brush 12" casing clean						
Trip charge to/from site	1.00	trip	\$	150.00	\$	150.00
SMEAL pump hoist	5.00	hrs	\$	155.00	\$	775.00
400 CFM AIR Compressor	1.00	day	\$	850.00	\$	850.00
1-1/2" tremie pipe	210.00	L.F.	\$	12.00	\$	2,520.00
Wire Brush	1.00	L.S.	\$	225.00	\$	225.00
Operator	7.00	hrs	\$	125.00	\$	875.00
Helper	7.00	hrs	\$	105.00	\$	735.00
					\$	6,130.00
DAY #4 - log and video well by Down Hole Well Services						
Video log well	1.00	L.S.	\$	1,895.00	\$	1,895.00
Gamma log well	1.00	L.S.	\$	1,895.00	\$	1,895.00
					\$	3,790.00
DAY #5 - Extend 12" diameter well casing 24" (removal of concrete slab)						
Trip charge to/from site	1.00	trip	\$	150.00	\$	150.00
Operator - welder	4.00	hrs	\$	125.00	\$	500.00
Helper	4.00	hrs	\$	105.00	\$	420.00
Welding machine	1.00	day	\$	75.00	\$	75.00
MAASS 10M	1.00	L.S.	\$	1,685.00	\$	1,685.00
Air compressor	2.00	hrs	\$	75.00	\$	150.00
Jack hammer	1.00	day	\$	150.00	\$	150.00
Support truck	1.00	day	\$	95.00	\$	95.00
12" black steel well casing	2.00	L.F.	\$	123.00	\$	246.00
					\$	3,471.00
DAY #6 - INSTALL new pump/motor/drop pipe/wire						
Trip charge to/from site	2.00	trip	\$	150.00	\$	300.00
SMEAL PUMP HOIST	5.00	hrs	\$	155.00	\$	775.00
Operator	8.00	hrs	\$	125.00	\$	1,000.00
Helper	8.00	hrs	\$	105.00	\$	840.00
Support truck	1.00	day	\$	95.00	\$	95.00
Franklin motor 6" 460v/60h/3ph 25hp	1.00	L.S.	\$	3,602.00	\$	3,602.00
A.Y. McDonald pump end 400GPM @ 200 TDH	1.00	L.S.	\$	3,408.00	\$	3,408.00
Black steel drop pipe 4" w/R&D COUPLINGS	147.00	L.F.	\$	35.37	\$	5,199.39
Submersible cable w/88-3 w/ground	150.00	L.F.	\$	3.20	\$	480.00
Valve Check 4", splice kit #8, tape,	1.00	L.S.	\$	587.50	\$	587.50
Black steel SWAG nipple w/4" X 5" THREAD AND 4" R&D coupling	1.00	L.S.	\$	138.00	\$	138.00
Baker Monitor 12W well cap w/vent	1.00	L.S.	\$	1,785.00	\$	1,785.00
Franklin NEMA 3R VFD Controller, remote start/stop X-series drive 480 volt	1.00	L.S.	\$	14,788.00	\$	14,788.00
Start up services, training 2hrs	2.00	hrs	\$	125.00	\$	250.00
Pressure transducer	1.00	L.S.	\$	267.00	\$	267.00
Air Vac Valve 1"	1.00	L.S.	\$	345.00	\$	345.00
1" WELD-O-LET	1.00	L.S.	\$	7.40	\$	7.40
3/4" WELD-O-LET	1.00	L.S.	\$	6.35	\$	6.35
BLEEDER 3/4" BRASS	2.00	L.S.	\$	7.64	\$	15.28
Electrical contractor, remove existing controller and install new one	1.00	L.S.	\$	1,595.00	\$	1,595.00
					\$	35,483.92
TOTAL WELL rehab ESTIMATE					\$	55,504.92

NOTE:

Down hole video and gamma log will determine if the well needs to be bailed back out to the original bottom of the well and the Mt Simon and Eau Claire formations (if present) are sealed off.

Sealing Cost can be determined at that time.

107242

County Anoka
 Quad Coon Lake
 Quad ID 135C

MINNESOTA DEPARTMENT OF HEALTH
WELL AND BORING REPORT
 Minnesota Statutes Chapter 1031

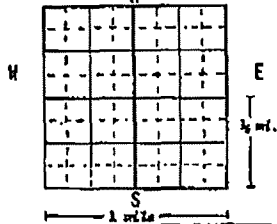
Entry Date 03/25/2021
 Update Date 08/13/2021
 Received Date

<table border="1" style="width:100%; border-collapse: collapse;"> <tr> <td style="width:15%;">Well Name</td> <td style="width:15%;">Township</td> <td style="width:10%;">Range</td> <td style="width:10%;">Dir</td> <td style="width:10%;">Section</td> <td style="width:10%;">Subsection</td> </tr> <tr> <td>HOGDAL,</td> <td>32</td> <td>23</td> <td>W</td> <td>22</td> <td>BBDDDC</td> </tr> <tr> <td>Elevation</td> <td>902 ft.</td> <td>Elev. Method</td> <td colspan="3">LiDAR 1m DEM (MNDNR)</td> </tr> <tr> <td colspan="6">Address</td> </tr> <tr> <td>Contact</td> <td colspan="5">2642 WESTLUND DR ANOKA MN 55303</td> </tr> <tr> <td>C/W</td> <td colspan="5">YANCY ST NE HAM LAKE MN</td> </tr> <tr> <td colspan="6">Stratigraphy Information</td> </tr> <tr> <td>Geological Material</td> <td>From</td> <td>To (ft.)</td> <td>Color</td> <td colspan="2">Hardness</td> </tr> <tr> <td>SAND</td> <td>0</td> <td>20</td> <td>BROWN</td> <td colspan="2"></td> </tr> <tr> <td>FINE WATERSAND</td> <td>20</td> <td>30</td> <td></td> <td colspan="2"></td> </tr> <tr> <td>SANDY CLAY</td> <td>30</td> <td>50</td> <td></td> <td colspan="2"></td> </tr> <tr> <td>GRAVEL</td> <td>50</td> <td>60</td> <td>BROWN</td> <td colspan="2"></td> </tr> <tr> <td>SAND & CLAY</td> <td>60</td> <td>150</td> <td></td> <td colspan="2"></td> </tr> <tr> <td>GRAVEL & ROCK</td> <td>150</td> <td>170</td> <td>GRAY</td> <td colspan="2"></td> </tr> <tr> <td>CLAY</td> <td>170</td> <td>180</td> <td>RED</td> <td colspan="2"></td> </tr> <tr> <td>SHALE & SANDROCK</td> <td>180</td> <td>225</td> <td></td> <td colspan="2"></td> </tr> <tr> <td>GREEN SHALE &</td> <td>225</td> <td>300</td> <td>GREEN</td> <td colspan="2"></td> </tr> <tr> <td>WHATE SANDROCK &</td> <td>300</td> <td>450</td> <td>WHITE</td> <td colspan="2"></td> </tr> <tr> <td>SANDROCK</td> <td>450</td> <td>490</td> <td>BROWN</td> <td colspan="2"></td> </tr> <tr> <td>SANDROCK</td> <td>490</td> <td>555</td> <td>WHITE</td> <td colspan="2"></td> </tr> </table>	Well Name	Township	Range	Dir	Section	Subsection	HOGDAL,	32	23	W	22	BBDDDC	Elevation	902 ft.	Elev. Method	LiDAR 1m DEM (MNDNR)			Address						Contact	2642 WESTLUND DR ANOKA MN 55303					C/W	YANCY ST NE HAM LAKE MN					Stratigraphy Information						Geological Material	From	To (ft.)	Color	Hardness		SAND	0	20	BROWN			FINE WATERSAND	20	30				SANDY CLAY	30	50				GRAVEL	50	60	BROWN			SAND & CLAY	60	150				GRAVEL & ROCK	150	170	GRAY			CLAY	170	180	RED			SHALE & SANDROCK	180	225				GREEN SHALE &	225	300	GREEN			WHATE SANDROCK &	300	450	WHITE			SANDROCK	450	490	BROWN			SANDROCK	490	555	WHITE			<table border="1" style="width:100%; border-collapse: collapse;"> <tr> <td style="width:20%;">Well Depth</td> <td style="width:20%;">Depth Completed</td> <td style="width:20%;">Date Well Completed</td> </tr> <tr> <td>555 ft.</td> <td>555 ft.</td> <td>11/02/1976</td> </tr> <tr> <td>Drill Method</td> <td colspan="2">Multiple methods used</td> </tr> <tr> <td colspan="3">Drill Fluid</td> </tr> <tr> <td>Use</td> <td>irrigation</td> <td>Status Active</td> </tr> <tr> <td>Well Hydrofractured?</td> <td>Yes <input type="checkbox"/> No <input type="checkbox"/></td> <td>From To</td> </tr> <tr> <td>Casing Type</td> <td>Single casing</td> <td>Joint</td> </tr> <tr> <td>Drive Shoe?</td> <td>Yes <input checked="" type="checkbox"/> No <input type="checkbox"/></td> <td>Above/Below 1 ft.</td> </tr> <tr> <td>Casing Diameter</td> <td colspan="2">Weight</td> </tr> <tr> <td>12 in. To</td> <td>226 ft.</td> <td>33 lbs./ft.</td> </tr> <tr> <td>Open Hole</td> <td>From 226 ft.</td> <td>To 555 ft.</td> </tr> <tr> <td>Screen?</td> <td><input type="checkbox"/></td> <td>Type Make</td> </tr> <tr> <td>Static Water Level</td> <td colspan="2">Measure 11/02/1976</td> </tr> <tr> <td>25 ft.</td> <td>land surface</td> <td></td> </tr> <tr> <td>Pumping Level (below land surface)</td> <td colspan="2">g.p.m.</td> </tr> <tr> <td>180 ft.</td> <td>4 hrs.</td> <td>Pumping at</td> </tr> <tr> <td>Wellhead Completion</td> <td colspan="2">Model</td> </tr> <tr> <td>Pitless adapter manufacturer</td> <td colspan="2"></td> </tr> <tr> <td><input type="checkbox"/> Casing Protection</td> <td colspan="2"><input type="checkbox"/> 12 in. above grade</td> </tr> <tr> <td><input type="checkbox"/> At-grade (Environmental Wells and Borings ONLY)</td> <td colspan="2"></td> </tr> <tr> <td>Grouting Information</td> <td>Well Grouted? <input checked="" type="checkbox"/> Yes <input type="checkbox"/> No <input type="checkbox"/> Not Specified</td> <td></td> </tr> <tr> <td>Material</td> <td>Amount</td> <td>From To</td> </tr> <tr> <td>bentonite</td> <td></td> <td>ft. ft.</td> </tr> <tr> <td>Nearest Known Source of Contamination</td> <td colspan="2">Type</td> </tr> <tr> <td>feet</td> <td colspan="2">Direction</td> </tr> <tr> <td>Well disinfected upon completion?</td> <td colspan="2"><input type="checkbox"/> Yes <input type="checkbox"/> No</td> </tr> <tr> <td>Pump</td> <td><input type="checkbox"/> Not Installed</td> <td>Date Installed</td> </tr> <tr> <td>Manufacturer's name</td> <td colspan="2"></td> </tr> <tr> <td>Model Number</td> <td>HP 75</td> <td>Volt</td> </tr> <tr> <td>Length of drop pipe</td> <td>ft</td> <td>Capacity g.p. Typ</td> </tr> <tr> <td>Abandoned</td> <td colspan="2">Does property have any not in use and not sealed well(s)? <input type="checkbox"/> Yes <input type="checkbox"/> No</td> </tr> <tr> <td>Variance</td> <td colspan="2">Was a variance granted from the MDH for this well? <input type="checkbox"/> Yes <input type="checkbox"/> No</td> </tr> <tr> <td>Miscellaneous</td> <td colspan="2"></td> </tr> <tr> <td>First Bedrock</td> <td>Tunnel City Group</td> <td>Aquifer Tunnel City-Mt.</td> </tr> <tr> <td>Last Strat</td> <td>Mt.Simon Sandstone</td> <td>Depth to Bedrock 180 ft</td> </tr> <tr> <td>Located by</td> <td colspan="2">Minnesota Geological Survey</td> </tr> <tr> <td>Locate Method</td> <td colspan="2">Digitization (Screen) - Map (1:24,000) (15 meters or</td> </tr> <tr> <td>System</td> <td>UTM - NAD83, Zone 15, Meters</td> <td>X 484373 Y 5010895</td> </tr> <tr> <td>Unique Number Verification</td> <td>Info/GPS from data</td> <td>Input Date 03/25/2021</td> </tr> <tr> <td>Angled Drill Hole</td> <td colspan="2"></td> </tr> <tr> <td>Well Contractor</td> <td colspan="2"></td> </tr> <tr> <td>Mc Alpine Brothers</td> <td>86270</td> <td></td> </tr> <tr> <td>Licensee Business</td> <td>Lic. or Reg. No.</td> <td>Name of Driller</td> </tr> </table>	Well Depth	Depth Completed	Date Well Completed	555 ft.	555 ft.	11/02/1976	Drill Method	Multiple methods used		Drill Fluid			Use	irrigation	Status Active	Well Hydrofractured?	Yes <input type="checkbox"/> No <input type="checkbox"/>	From To	Casing Type	Single casing	Joint	Drive Shoe?	Yes <input checked="" type="checkbox"/> No <input type="checkbox"/>	Above/Below 1 ft.	Casing Diameter	Weight		12 in. To	226 ft.	33 lbs./ft.	Open Hole	From 226 ft.	To 555 ft.	Screen?	<input type="checkbox"/>	Type Make	Static Water Level	Measure 11/02/1976		25 ft.	land surface		Pumping Level (below land surface)	g.p.m.		180 ft.	4 hrs.	Pumping at	Wellhead Completion	Model		Pitless adapter manufacturer			<input type="checkbox"/> Casing Protection	<input type="checkbox"/> 12 in. above grade		<input type="checkbox"/> At-grade (Environmental Wells and Borings ONLY)			Grouting Information	Well Grouted? <input checked="" type="checkbox"/> Yes <input type="checkbox"/> No <input type="checkbox"/> Not Specified		Material	Amount	From To	bentonite		ft. ft.	Nearest Known Source of Contamination	Type		feet	Direction		Well disinfected upon completion?	<input type="checkbox"/> Yes <input type="checkbox"/> No		Pump	<input type="checkbox"/> Not Installed	Date Installed	Manufacturer's name			Model Number	HP 75	Volt	Length of drop pipe	ft	Capacity g.p. Typ	Abandoned	Does property have any not in use and not sealed well(s)? <input type="checkbox"/> Yes <input type="checkbox"/> No		Variance	Was a variance granted from the MDH for this well? <input type="checkbox"/> Yes <input type="checkbox"/> No		Miscellaneous			First Bedrock	Tunnel City Group	Aquifer Tunnel City-Mt.	Last Strat	Mt.Simon Sandstone	Depth to Bedrock 180 ft	Located by	Minnesota Geological Survey		Locate Method	Digitization (Screen) - Map (1:24,000) (15 meters or		System	UTM - NAD83, Zone 15, Meters	X 484373 Y 5010895	Unique Number Verification	Info/GPS from data	Input Date 03/25/2021	Angled Drill Hole			Well Contractor			Mc Alpine Brothers	86270		Licensee Business	Lic. or Reg. No.	Name of Driller
Well Name	Township	Range	Dir	Section	Subsection																																																																																																																																																																																																																																																					
HOGDAL,	32	23	W	22	BBDDDC																																																																																																																																																																																																																																																					
Elevation	902 ft.	Elev. Method	LiDAR 1m DEM (MNDNR)																																																																																																																																																																																																																																																							
Address																																																																																																																																																																																																																																																										
Contact	2642 WESTLUND DR ANOKA MN 55303																																																																																																																																																																																																																																																									
C/W	YANCY ST NE HAM LAKE MN																																																																																																																																																																																																																																																									
Stratigraphy Information																																																																																																																																																																																																																																																										
Geological Material	From	To (ft.)	Color	Hardness																																																																																																																																																																																																																																																						
SAND	0	20	BROWN																																																																																																																																																																																																																																																							
FINE WATERSAND	20	30																																																																																																																																																																																																																																																								
SANDY CLAY	30	50																																																																																																																																																																																																																																																								
GRAVEL	50	60	BROWN																																																																																																																																																																																																																																																							
SAND & CLAY	60	150																																																																																																																																																																																																																																																								
GRAVEL & ROCK	150	170	GRAY																																																																																																																																																																																																																																																							
CLAY	170	180	RED																																																																																																																																																																																																																																																							
SHALE & SANDROCK	180	225																																																																																																																																																																																																																																																								
GREEN SHALE &	225	300	GREEN																																																																																																																																																																																																																																																							
WHATE SANDROCK &	300	450	WHITE																																																																																																																																																																																																																																																							
SANDROCK	450	490	BROWN																																																																																																																																																																																																																																																							
SANDROCK	490	555	WHITE																																																																																																																																																																																																																																																							
Well Depth	Depth Completed	Date Well Completed																																																																																																																																																																																																																																																								
555 ft.	555 ft.	11/02/1976																																																																																																																																																																																																																																																								
Drill Method	Multiple methods used																																																																																																																																																																																																																																																									
Drill Fluid																																																																																																																																																																																																																																																										
Use	irrigation	Status Active																																																																																																																																																																																																																																																								
Well Hydrofractured?	Yes <input type="checkbox"/> No <input type="checkbox"/>	From To																																																																																																																																																																																																																																																								
Casing Type	Single casing	Joint																																																																																																																																																																																																																																																								
Drive Shoe?	Yes <input checked="" type="checkbox"/> No <input type="checkbox"/>	Above/Below 1 ft.																																																																																																																																																																																																																																																								
Casing Diameter	Weight																																																																																																																																																																																																																																																									
12 in. To	226 ft.	33 lbs./ft.																																																																																																																																																																																																																																																								
Open Hole	From 226 ft.	To 555 ft.																																																																																																																																																																																																																																																								
Screen?	<input type="checkbox"/>	Type Make																																																																																																																																																																																																																																																								
Static Water Level	Measure 11/02/1976																																																																																																																																																																																																																																																									
25 ft.	land surface																																																																																																																																																																																																																																																									
Pumping Level (below land surface)	g.p.m.																																																																																																																																																																																																																																																									
180 ft.	4 hrs.	Pumping at																																																																																																																																																																																																																																																								
Wellhead Completion	Model																																																																																																																																																																																																																																																									
Pitless adapter manufacturer																																																																																																																																																																																																																																																										
<input type="checkbox"/> Casing Protection	<input type="checkbox"/> 12 in. above grade																																																																																																																																																																																																																																																									
<input type="checkbox"/> At-grade (Environmental Wells and Borings ONLY)																																																																																																																																																																																																																																																										
Grouting Information	Well Grouted? <input checked="" type="checkbox"/> Yes <input type="checkbox"/> No <input type="checkbox"/> Not Specified																																																																																																																																																																																																																																																									
Material	Amount	From To																																																																																																																																																																																																																																																								
bentonite		ft. ft.																																																																																																																																																																																																																																																								
Nearest Known Source of Contamination	Type																																																																																																																																																																																																																																																									
feet	Direction																																																																																																																																																																																																																																																									
Well disinfected upon completion?	<input type="checkbox"/> Yes <input type="checkbox"/> No																																																																																																																																																																																																																																																									
Pump	<input type="checkbox"/> Not Installed	Date Installed																																																																																																																																																																																																																																																								
Manufacturer's name																																																																																																																																																																																																																																																										
Model Number	HP 75	Volt																																																																																																																																																																																																																																																								
Length of drop pipe	ft	Capacity g.p. Typ																																																																																																																																																																																																																																																								
Abandoned	Does property have any not in use and not sealed well(s)? <input type="checkbox"/> Yes <input type="checkbox"/> No																																																																																																																																																																																																																																																									
Variance	Was a variance granted from the MDH for this well? <input type="checkbox"/> Yes <input type="checkbox"/> No																																																																																																																																																																																																																																																									
Miscellaneous																																																																																																																																																																																																																																																										
First Bedrock	Tunnel City Group	Aquifer Tunnel City-Mt.																																																																																																																																																																																																																																																								
Last Strat	Mt.Simon Sandstone	Depth to Bedrock 180 ft																																																																																																																																																																																																																																																								
Located by	Minnesota Geological Survey																																																																																																																																																																																																																																																									
Locate Method	Digitization (Screen) - Map (1:24,000) (15 meters or																																																																																																																																																																																																																																																									
System	UTM - NAD83, Zone 15, Meters	X 484373 Y 5010895																																																																																																																																																																																																																																																								
Unique Number Verification	Info/GPS from data	Input Date 03/25/2021																																																																																																																																																																																																																																																								
Angled Drill Hole																																																																																																																																																																																																																																																										
Well Contractor																																																																																																																																																																																																																																																										
Mc Alpine Brothers	86270																																																																																																																																																																																																																																																									
Licensee Business	Lic. or Reg. No.	Name of Driller																																																																																																																																																																																																																																																								
<p>Remarks THE WELL IS LOCATED AT THE END OF THE CUL DE SAC FOR YANCY STREET NE, JUST EAST OF 154TH LN NE, HAM LAKE, MN.</p>																																																																																																																																																																																																																																																										

1. LOCATION OF WELL:
 County Name _____ Fraction _____ Section Number _____ Township Number _____ Range Number _____
 N. or S. E. or W.

Distance and Direction from Road Intersections or Street Address and City of Well Location

Show exact location of well in section grid with "X." Sketch map of well location.



77-6064 RECEIVED
 AUG 27
 Division of Waters

FORMATION LOG	COLOR	HARDNESS OF FOUNDATION	FROM	TO
0-20	Brown Sand			
20-30	water sand (fine)			
30-50	Sandy clay			
50-60	Brown Gravel			
60-150	Sand & Clay			
150-170	Gravel & rock gray			
170-180	red clay			
180-225	shale & sand rock			
225-300	green shale & sand rock			
300-450	white sand rock & shale			
450-490	Brown sand rock			
490-555	white sand rock			

3. PROPERTY OWNER'S NAME
Vergal Hospital
 Address
**2642 Westlund Dr.
 Anoka Mn. 55303**

4. WELL DEPTH (completed) _____ ft. Date of Completion _____
 5. Cable tool Reverse Driven Dug
 Bollow rod Air Bored _____
 Rotary Jetted Power Auger

6. USE
 Domestic Public Supply Industry
 Irrigation Air Conditioning Commercial
 Test Well _____

7. CASING DIAM. _____ Threaded 1 Welded 2
 12" Black 2 Galv. 4
 in. to 226 ft. depth Weight 33 lbs./ft.
 in. to _____ ft. depth
 in. to _____ ft. depth Drive Shoe? Yes No _____

8. SCREEN Or open hole from 206 ft. to 555 ft.
 Make _____ Type _____ Dia. _____
 Slot/Screen _____ Length _____ FITTINGS
 Set between _____ ft. and _____ ft.
 _____ ft. and _____ ft.
 _____ ft. and _____ ft.

9. STATIC WATER LEVEL 25 ft. below land surface above Date Measured 11/2/76

10. PUMPING LEVEL (below land surface) 180 ft. after 4 hrs. pumping _____ g.p.m.
 _____ ft. after _____ hrs. pumping _____ g.p.m.

11. WELL HEAD COMPLETION
 Pitless adapter Basement offset At least 12" above grade

12. Well grouted? Yes No Cu. Yds. _____
 Heat cement Bentonite _____
 Depth: from _____ ft. to _____ ft.
 from _____ ft. to _____ ft.

13. Nearest source of possible contamination _____ feet _____ direction _____ type
 Well disinfected upon completion? Yes No

14. PUMP Date installed _____
 Not installed
 Manufacturer's Name _____
 Model Number _____ HP _____ Volts _____
 Length of drop pipe _____ ft. capacity _____ g.p.m.
 Material of drop pipe _____
 Type: Submersible L.S. Turbine Reciprocating
 Jet Centrifugal _____

15. WATER WELL CONTRACTOR'S CERTIFICATION
 This well was drilled under my jurisdiction and this report is true to the best of my knowledge and belief.

 License Business Name _____ License No. _____
 Address _____
 Signed _____ Date _____
 Authorized Representative

15. REMARKS, ELEVATION, SOURCE OF DATA, etc.
 Use a second sheet, if needed.

Minnesota Unique Well No.

107242

County Anoka
 Quad Coon Lake Beach
 Quad ID 135C

MINNESOTA DEPARTMENT OF HEALTH
WELL AND BORING RECORD
Minnesota Statutes Chapter 1031

Entry Date 03/25/2021
 Update
 Received Date 08/13/2021

Well Name	Township	Range	Dir	Section	Subsection	Use	Status	Well Depth	Depth Completed	Date Well Completed	Lic/Reg. No.		
HOGDAL, VIRGIL	32	23	W	22	BBDDDC	irrigation	A	555 ft.	555 ft.	11/02/1976	86270		
Elevation	902 ft.	Elev. Method	LiDAR 1m DEM (MNDNR)			Aquifer	Tunnel City-Mt.	Depth to Bedrock	180 ft	Open Hole	226 - 555 ft	Static Water Level	25 ft
Field Located By	Minnesota Geological Survey				Locate Method	Digitization (Screen) - Map (1:24,000) (15 meters)			Universal Transverse Mercator (UTM) - NAD83 - Zone 15 -				
Unique No. Verified	Info/GPS from data source				Input Source	Minnesota Geological Survey			UTM Easting (X)	484373			
Geological Interpretation	Andrew Retzler				Input Date	03/25/2021			UTM Northing (Y)	501089			
Agency (Interpretation)									Interpretation Method	Geologic study 1:24k to 1:100k			

Geological Material	Color	Hardness	Depth (ft.)		Thickness	Elevation (ft.)		Stratigraphy	Primary Lithology	Secondary	Minor Lithology
			From	To		From	To				
SAND	BROWN		0	20	20	902	882	sand-brown	sand		
FINE WATERSAND			20	30	10	882	872	sand	sand		
SANDY CLAY			30	50	20	872	852	clay+sand	clay	sand	
GRAVEL	BROWN		50	60	10	852	842	gravel (+larger)-	gravel		
SAND & CLAY			60	150	90	842	752	clay+sand	sand	clay	
GRAVEL & ROCK	GRAY		150	170	20	752	732	gravel (+larger)-gray	gravel	cobble	
CLAY	RED		170	180	10	732	722	clay-red	clay		
SHALE & SANDROCK			180	225	45	722	677	Tunnel City Group	shale	sandstone	
GREEN SHALE & SANDROCK	GREEN		225	300	75	677	602	Tunnel City Group	shale	sandstone	
WHATE SANDROCK &	WHITE		300	450	150	602	452	Wonewoc-Eau Claire	sandstone	shale	
SANDROCK	BROWN		450	490	40	452	412	Mt.Simon Sandstone	sandstone		
SANDROCK	WHITE		490	555	65	412	347	Mt.Simon Sandstone	sandstone		

Minnesota Well Index - Stratigraphy Report

107242

Printed on 08/16/2021

2717 154th Lane NE

Write a description for your map.

Legend

Lot 45, 251375
Lot 73, 199140
18'
Well
15 HP
1800 RPM
460-3ph
52 power box



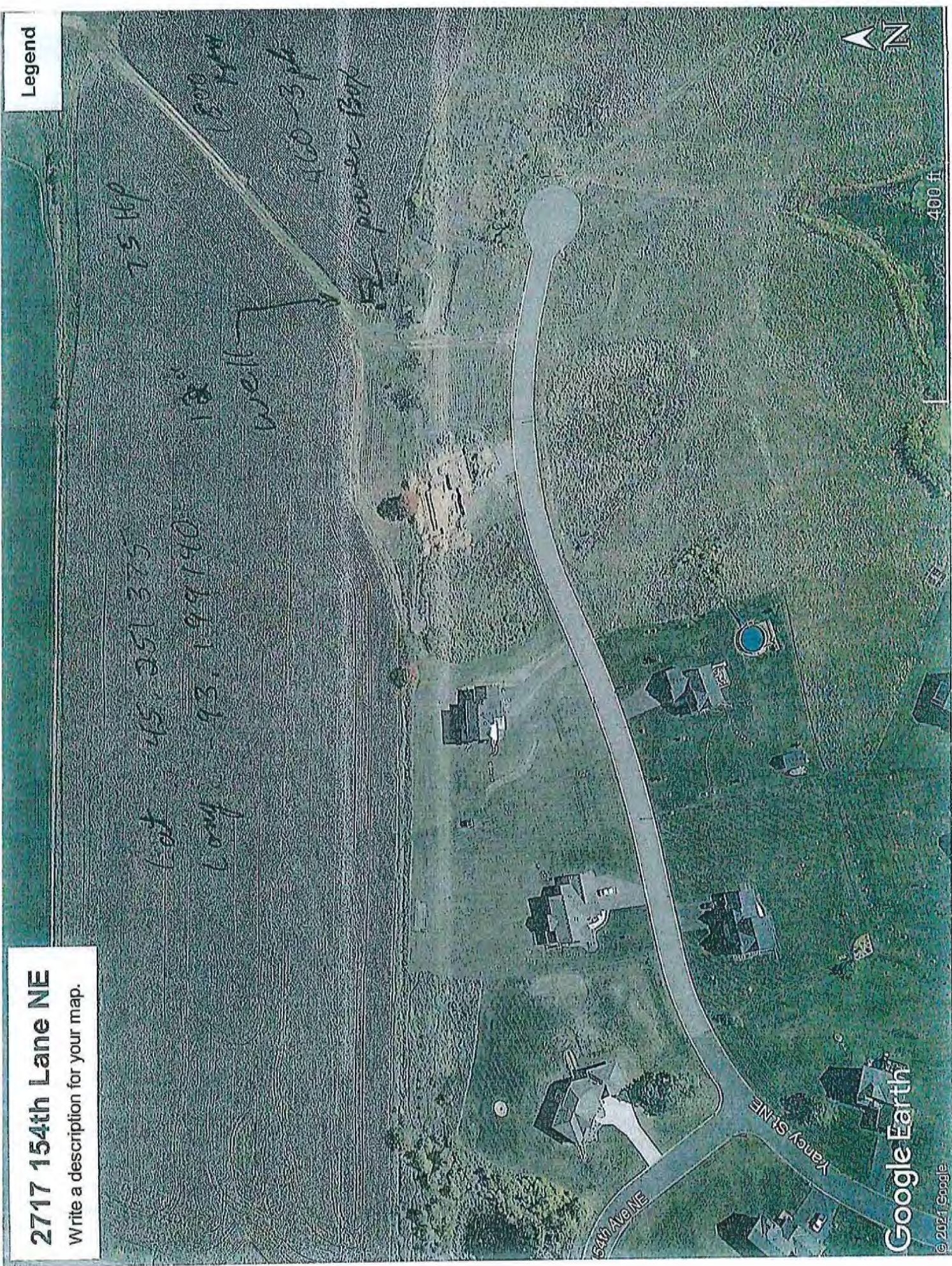
400 ft

Google Earth

© 2021 Google

64th Ave NE

Kaney St NE





647338

107242
well

818649

800598

220389

122160

191984

802129

642745 146088 803362

526160

439011

146126 127203

750946

607115 607752

33895

114448

431671

678661

769219

140035 485940

815089

143447

179308

122757

448334

131226

741630

429081

571681

126626

122529

429078

270330

131289

404504

411538

135834

151803

178192

750919

146251

199973

660156

132035

122860

122680

541252

618288

512814

644650

710847

671761

713091

661006

675434

661141

CITY OF HAM LAKE FIRE DEPT
HOGDAL FARM IRRIGATION WELL
2642 WESTLUND DR
ANOKA, MN 55303

8/15/2021
DATE _____ Roger E. Renner Pres.

ATTN: Mike Raczkowski, Fire Chief
(763) 434-9555

DATE _____

RE: ESTIMATE for redevelopment, new pump, controls: well Unique #107242
2727 154th Lane Ne, Ham Lake, MN 55304

WORK TASKS
Remove existing pump from well & dispose of it.
Bail residual line shaft turbine oil from well & barrel up for disposal
Air lift and wire brush well clean
Video Log and gamma log well
Install new pump/motor, drop pipe, subcable, MAASS 10/4 pitless, new well cap
Raise well casing 3ft to meet well code.
Furnish & install new VFD controller

DESCRIPTION	Est #	UNITS	UNIT PRICE	TOTAL EST. EXTENSION
DAY #1 - remove existing oil-lub line shaft turbine pump				
Trip charge to/from site	1.00	L.S.	\$ 150.00	\$ 150.00
SMEAL pump hoist	6.00	hrs	\$ 155.00	\$ 930.00
Operator	8.00	hrs	\$ 125.00	\$ 1,000.00
Helper	8.00	hrs	\$ 105.00	\$ 840.00
Support truck	1.00	day	\$ 95.00	\$ 95.00
Oil containment, tyvek suits, gloves, poly sheeting decon	1.00	L.S.	\$ 600.00	\$ 600.00
Shop time & pressure washer	1.00	HR	\$ 100.00	\$ 100.00
DAY #2 - Remove oil from well				
Trip charge to/from site	1.00	trip	\$ 150.00	\$ 150.00
SMEAL PUMP HOIST	4.00	hrs	\$ 155.00	\$ 620.00
59A type 55 gallon barrels with locking lids	5.00	ea	\$ 60.00	\$ 300.00
Operator	5.00	hrs	\$ 125.00	\$ 625.00
Helper	5.00	hrs	\$ 105.00	\$ 525.00
Support truck	1.00	day	\$ 95.00	\$ 95.00
Oil Disposal fee	1.00	L.S.	\$ 600.00	\$ 600.00

\$ 3,715.00

\$ 2,915.00

DAY #3 - air lift and wire brush 12" casing clean

Trip charge to/from site	1.00	trip	\$ 150.00	\$ 150.00	
SMEAL pump hoist	5.00	hrs	\$ 155.00	\$ 775.00	
400 CFM AIR Compressor	1.00	day	\$ 850.00	\$ 850.00	
1-1/2" tremie pipe	210.00	L.F.	\$ 12.00	\$ 2,520.00	
Wire Brush	1.00	L.S.	\$ 225.00	\$ 225.00	
Operator	7.00	hrs	\$ 125.00	\$ 875.00	
Helper	7.00	hrs	\$ 105.00	\$ 735.00	\$ 6,130.00

DAY #4 - log and video well by Down Hole Well Services

Video log well	1.00	L.S.	\$ 1,895.00	\$ 1,895.00	
Gamma log well	1.00	L.S.	\$ 1,895.00	\$ 1,895.00	\$ 3,790.00

DAY #5 - Extend 12" diameter well casing 24" (removal of concrete slab)

Trip charge to/from site	1.00	trip	\$ 150.00	\$ 150.00	
Operator - welder	4.00	hrs	\$ 125.00	\$ 500.00	
Helper	4.00	hrs	\$ 105.00	\$ 420.00	
Welding machine	1.00	day	\$ 75.00	\$ 75.00	
MAASS 1014	1.00	L.S.	\$ 1,685.00	\$ 1,685.00	
Air compressor	2.00	hrs	\$ 75.00	\$ 150.00	
Jack hammer	1.00	day	\$ 150.00	\$ 150.00	
Support truck	1.00	day	\$ 95.00	\$ 95.00	
12" black steel well casing	2.00	L.F.	\$ 123.00	\$ 246.00	\$ 3,471.00

DAY #6 - INSTALL new pump/motor/drop pipe/wire

Trip charge to/from site	2.00	trip	\$ 150.00	\$ 300.00	
SMEAL PUMP HOIST	5.00	hrs	\$ 155.00	\$ 775.00	
Operator	8.00	hrs	\$ 125.00	\$ 1,000.00	
Helper	8.00	hrs	\$ 105.00	\$ 840.00	
Support truck	1.00	day	\$ 95.00	\$ 95.00	
Franklin motor 6" 460v/60h/3ph 25hp	1.00	L.S.	\$ 3,602.00	\$ 3,602.00	
A.Y. McDonald pump end 400GPM @ 200 TDH	1.00	L.S.	\$ 3,408.00	\$ 3,408.00	
Black steel drop pipe 4" w/R&D COUPLINGS	147.00	L.F.	\$ 35.37	\$ 5,199.39	
Submersible cable w/#8-3 w/ground	150.00	L.F.	\$ 3.20	\$ 480.00	
Valve Check 4", splice kit #8, tape,	1.00	L.S.	\$ 587.50	\$ 587.50	
Black steel SWAG nipple w/4" X 5" THREAD AND 4" R&D coupling	1.00	L.S.	\$ 138.00	\$ 138.00	
Baker Monitor 12W well cap w/vent	1.00	L.S.	\$ 1,785.00	\$ 1,785.00	
Franklin NEMA 3R VFD Controller, remote start/stop X-series drive 480 volt	1.00	L.S.	\$ 14,788.00	\$ 14,788.00	
Start up services, training 2hrs	2.00	hrs	\$ 125.00	\$ 250.00	
Pressure transducer	1.00	L.S.	\$ 267.00	\$ 267.00	
Air Vac Valve 1"	1.00	L.S.	\$ 345.00	\$ 345.00	
1" WELD-O-LET	1.00	L.S.	\$ 7.40	\$ 7.40	
3/4" WELD-O-LET	1.00	L.S.	\$ 6.35	\$ 6.35	
BLEEDER 3/4" BRASS	2.00	L.S.	\$ 7.64	\$ 15.28	
Electrical contractor, remove existing controller and install new one	1.00	L.S.	\$ 1,595.00	\$ 1,595.00	\$ 35,483.92

TOTAL WELL rehab ESTIMATE					\$ 55,504.92
---------------------------	--	--	--	--	--------------

NOTE:

Down hole video and gamma log will determine if the well needs to be bailed back out to the original bottom of the well and the Mt Simon and Eau Claire formations (if present) are sealed off.

Sealing Cost can be determined at that time.



345-HWW ST CLOUD
 Tele: 320-251-1362
 4657 Heatherwood Rd
 St. Cloud, MN 56301

Expiration Date:		Quotation
Ship Whse	Order Date	Order Number
345	2021-08-13	345006706-00
Placed By		PO Number

Cust # 145013

Bill To E.H. RENNER & SONS INC.
 15688 JARVIS ST NW
 ELK RIVER, MN 55330-6220 US

Ship To E.H. RENNER & SONS INC.
 15688 JARVIS ST NW
 ELK RIVER, MN 55330-6220 US

Instructions	Route	For questions about this order, contact:	
		MARK HUSNIK 320-251-1362	
Ex Works Ship Point	Via	Shipped	Terms
HWW ST CLOUD	BESTWAY		2%15thNetEOM
Reference	SlsRepln/Out	Freight Terms Description	
	345/3453	PREPAID	

Ln #	Product And Description	Quantity Ordered	Quantity Shipped	Quantity Backordered	Qty UM	Unit Price	Amount Extended
1	352-1275X375BPBEB STEEL PIPE 12 3/4"OD X .375W BPEB	231	231	0	FT	68.390	15,798.09
2	201-MAA10X4J MAASS 10 X 4 J WELD ON 928150	1	1	0	EACH	946.220	946.22
3	12W BAKER WELL CAP	1	1	0	EACH	1,005.000	1,005.00
4	0506-2506F35SFST 25HP 460/3 3W 6" FR MTR SANDFTR SBTRL 2366158120	1	1	0	EA	2,023.420	2,023.42
5	400S25HP86 25HP SS PUMP END	1	1	0	EACH	1,915.000	1,915.00
6	352-450X237BTC-RD-DOM STEEL 4-1/2" X .237 BLK T&C W/ R&D CPLG DOMESTIC	147	147	0	FT	19.870	2,920.89
7	258-7939DIX 4" D-IRON CHECK VALVE W/O B-OFF PLUG FLOMATIC	1	1	0	EACH	317.120	317.12
8	171-HD8-3WG 1000' HEAVY DUTY 8-3 W/ GRD SUBM PUMP CABLE	150	150	0	FT	1.800	270.00
9	268-HS4-8-CLR HEAT SHRINK KIT 4 WIRE #8 WIRE, CLEAR	1	1	0	EA	5.140	5.14
10	233-PWRAP2 2" X 100' 10 MIL PIPE WRAP WONDER TAPE	1	1	0	EA	7.280	7.28
11	320-400X12BLKN 4" X 12" BLK STEEL NIPPLE	1	1	0	EA	41.390	41.39
12	320-400BLKC-RD COUPLING R&D 4"BLACK	1	1	0	EA	36.380	36.38
13	XS4B0450-3A N3R SUB W/DISC 45A 460V 25HP NEMA 3R CABINET HEATER, KEYED HOA, FUSED DISC. EXTERIOR LIGHT	1	1	0	EACH	8,308.000	8,308.00
14	521-PSIG-200-20FT TRANSDUCER 200PSI 4-20MA 20FT/ PRESSURE GAUGE	1	1	0	EACH	152.710	152.71
15	1" THD O LET TL1363	1	1	0	EACH	7.400	7.40



345-HWW ST CLOUD
 Tele: 320-251-1362
 4657 Heatherwood Rd
 St._Cloud, MN 56301

Expiration Date: **Quotation**

Ship Whse	Order Date	Order Number
345	2021-08-13	345006706-00
Placed By	PO Number	

Cust # 145013

Bill To E.H. RENNER & SONS INC.
 15688 JARVIS ST NW
 ELK RIVER, MN 55330-6220 US

Ship To E.H. RENNER & SONS INC.
 15688 JARVIS ST NW
 ELK RIVER, MN 55330-6220 US

Instructions	Route	For questions about this order, contact: MARK HUSNIK 320-251-1362	
Ex Works Ship Point	Via	Shipped	Terms
HWW ST CLOUD	BESTWAY		2%15thNetEOM
Reference	SlsRepln/Out	Freight Terms Description	
	345/3453	PREPAID	

Ln #	Product And Description	Quantity Ordered	Quantity Shipped	Quantity Backordered	Qty UM	Unit Price	Amount Extended
16	3/4" THD O LET	1	1	0	EACH	6.350	6.35
17	252-MAA922792 3/4" BRASS BLEEDER VALVE MAASS	1	1	0	EA	7.640	7.64

17 Lines Total

Sub Total 33,768.03
 Taxes 2,659.23
 Total 36,427.26

CITY OF HAM LAKE FIRE DEPT
HOGDAL FARM IRRIGATION WELL
2642 WESTLUND DR
ANOKA, MN 55303

ATTN: Mike Raczkowski, Fire Chief

(763) 434-9555

\$1.78

<i>12" black steel well casing</i>	3.00	L.F.	69.39	\$123.51
<i>MAASS 10J4 pitless unit</i>	1.00	L.S.	\$ 946.22	\$1,684.27
<i>Baker Monitor 12W well cap w/vent</i>	1.00	L.S.	\$ 1,005.00	\$1,788.90
<i>Franklin motor 6" 460v/60h/3ph 25hp</i>	1.00	L.S.	\$ 2,023.42	\$3,601.69
<i>A.Y. McDonald pump end 400GPM @ 200 TDH</i>	1.00	L.S.	\$ 1,915.00	\$3,408.70
<i>Black steel drop pipe W/r&d COUPLINGS</i>	147.00	L.F.	\$ 19.87	\$35.37
<i>Submersible cable w/#8-3 w/ground</i>	150.00	L.F.	\$ 1.80	\$3.20
<i>Valve, check ductil iron</i>	1.00	L.S.	\$ 317.12	\$564.47
<i>SPLICE KIT 4 WIRE #8</i>	1.00	L.S.	\$ 13.00	\$23.14
<i>Black steel nipple 1ft long w/4" R&D coupling</i>	1.00	L.S.	\$ 77.77	\$138.43
<i>Franklin NEMA 3R VFD Controller, remote start/stop X-series drive 480 volt</i>	1.00	L.S.	\$ 8,308.00	\$14,788.24
<i>Heater, thermostat, Key hand-off-auto, fused disconnect, exterior light, switch.</i>	1.00	L.S.		\$0.00
<i>Stand</i>	1.00	L.S.	\$ 150.00	\$267.00
<i>Pressure transducer</i>	1.00	L.S.	\$ 152.71	\$271.82
<i>Air Vac Valve 1"</i>	1.00	L.S.	\$ 345.00	\$614.10
<i>1" WELD-O-LET</i>	1.00	L.S.	\$ 7.40	\$13.17
<i>3/4" WELD-O-LET</i>	1.00	L.S.	\$ 6.35	\$11.30
<i>BLEEDER 3/4" BRASS</i>	1.00	L.S.	\$ 7.64	\$13.60
<i>Electrical contractor, remove existing controller and install new one</i>	1.00	L.S.	\$ 1,200.00	\$2,136.00

ROGER E. RENNER, PRESIDENT

E.H. RENNER & SONS, INC.

rerenner@ehrenner.com (763) 286-9355